

**DISCARDS IN THE NORTH PACIFIC
GROUND FISH FISHERIES
2003**

prepared for



Alaska Marine Conservation Council

Box 101145 • Anchorage, Alaska 99510
(907) 277-5357 • (fax) 277-5975
amcc@akmarine.org • www.akmarine.org

by

Fisheries Information Services

20007 Cohen Drive
Juneau, Alaska 99801
fis@ptialaska.net

August 2004

Alaska Marine Conservation Council is a community-based organization of people working to protect the health and diversity of Alaska's marine ecosystem. Our members are fishermen, subsistence harvesters, marine scientists, conservationists, small business owners and families. AMCC works to minimize bycatch, protect habitat, prevent overfishing and promote clean community-based fishing opportunities.

For additional copies of this report or for information about AMCC's program, how to reach our board of directors, or how to get involved, contact us at:

P.O. Box 101145
Anchorage, AK 99510
(907) 277-5357; fax 277-5975
e-mail: amcc@akmarine.org
homepage: www.akmarine.org

Discards in the North Pacific Groundfish Fisheries 2003, is the continuation of a time series of catch and discard data. Previous years of bycatch data can be found on the Alaska Marine Conservation Council website and the Alaska Department of Fish and Game Commercial Fisheries website: www.cf.adfg.state.ak.us.

Discards in the Groundfish Fisheries of the Bering Sea/ Aleutian Islands & the Gulf of Alaska **1995-1997**: http://www.cf.adfg.state.ak.us/geninfo/pubs/95_97discard/95_97discard.pdf.

Discards in the Groundfish Fisheries of the Bering Sea/ Aleutian Islands & the Gulf of Alaska **1998- 2000**: http://www.cf.adfg.state.ak.us/geninfo/pubs/98_00discard/98_00discard.php.

Discards in the North Pacific Groundfish Fisheries **2001, 2002 and 2003**:
www.akmarine.org

CONTENTS

INTRODUCTION	P.1
DATA SOURCE AND METHODOLOGY	P.2
MANAGING ENTITIES	P.3
GENERAL CAUSES OF DISCARDS	P.3
MANAGEMENT ACTIONS	P.3
CDQ FISHERIES	P.4
REVIEW OF 2002 – 2003 DATA	P.4

APPENDIX 1.

BERING SEA AND ALEUTIAN ISLANDS FIGURES

FIGURE 1	PELAGIC POLLOCK HARVEST AND CHINOOK SALMON BYCATCH	P. 14
FIGURE 2	PELAGIC POLLOCK HARVEST AND “OTHER” SALMON BYCATCH	P. 15
FIGURE 3	YELLOWFIN SOLE HARVEST AND <i>C. BAIRDI</i> CRAB BYCATCH	P. 16
FIGURE 4	ROCK SOLE HARVEST AND RED KING CRAB BYCATCH	P. 17
FIGURE 5	2002 AND 2003 DISCARDS BY SECTOR: PERCENT OF TOTAL CATCH	P. 18
FIGURE 6	2002 – 2003 HIGH VOLUME FISHERIES WITH HIGHEST DISCARD RATES	P. 19
FIGURE 7	2002 – 2003 LOW VOLUME FISHERIES WITH HIGH DISCARD RATES	P. 20

BERING SEA AND ALEUTIAN ISLANDS CATCH AND DISCARD TABLES: 2003

TABLE 6	ALL GEAR ALL MODES ALL TARGETS	P. 23
TABLE 7	TRAWL CATCHER/PROCESSOR ALL TARGETS	P. 24
TABLE 8	TRAWL CATCHER/PROCESSOR ATKA MACKEREL	P. 25
TABLE 9	TRAWL CATCHER/PROCESSOR BOTTOM POLLOCK	P. 26
TABLE 10	TRAWL CATCHER/PROCESSOR MIDWATER POLLOCK	P. 27
TABLE 11	TRAWL CATCHER/PROCESSOR PACIFIC COD	P. 28
TABLE 12	TRAWL CATCHER/PROCESSOR ROCKFISH	P. 29
TABLE 13	TRAWL CATCHER/PROCESSOR FLATHEAD SOLE	P. 30
TABLE 14	TRAWL CATCHER/PROCESSOR ROCK SOLE	P. 31
TABLE 15	TRAWL CATCHER/PROCESSOR GREENLAND TURBOT	P. 32
TABLE 16	TRAWL CATCHER/PROCESSOR YELLOWFIN SOLE	P. 33

Discards in the North Pacific Groundfish Fisheries, 2003

TABLE 17	TRAWL CATCHER/PROCESSOR ARROWTOOTH FLOUNDER	P. 34
TABLE 18	TRAWL SHORESIDE ALL TARGETS	P. 35
TABLE 19	TRAWL SHORESIDE BOTTOM POLLOCK	P. 36
TABLE 20	TRAWL SHORESIDE MIDWATER POLLOCK	P. 37
TABLE 21	TRAWL SHORESIDE PACIFIC COD	P. 38
TABLE 22	TRAWL MOTHERSHIP ALL TARGETS	P. 39
TABLE 23	TRAWL MOTHERSHIP MIDWATER POLLOCK	P. 40
TABLE 24	HOOK-AND-LINE CATCHER/PROCESSOR ALL TARGETS	P. 41
TABLE 25	HOOK-AND-LINE CATCHER/PROCESSOR GREENLAND TURBOT	P. 42
TABLE 26	HOOK-AND-LINE CATCHER/PROCESSOR PACIFIC COD	P. 43
TABLE 27	HOOK-AND-LINE CATCHER/PROCESSOR SABLEFISH	P. 44
TABLE 28	HOOK-AND-LINE CATCHER/PROCESSOR OTHER	P. 45
TABLE 29	HOOK-AND-LINE SHORESIDE ALL TARGETS	P. 46
TABLE 30	HOOK-AND-LINE SHORESIDE PACIFIC COD	P. 47
TABLE 31	HOOK-AND-LINE SHORESIDE SABLEFISH	P. 48
TABLE 32	JIG SHORESIDE PACIFIC COD	P. 49
TABLE 33	POT ALL MODES ALL TARGETS	P. 50
TABLE 34	POT SHORESIDE PACIFIC COD	P. 51
TABLE 35	POT SHORESIDE SABLEFISH	P. 52
TABLE 36	POT CATCHER/PROCESSOR PACIFIC COD	P. 53

APPENDIX 2.

GULF OF ALASKA FIGURES

FIGURE 8	POLLOCK HARVEST AND CHINOOK SALMON BYCATCH	P. 56
FIGURE 9	SHALLOW-WATER COMPLEX, WEEKLY GROUND FISH HARVEST	P. 57
FIGURE 10	SHALLOW-WATER COMPLEX, WEEKLY HALIBUT MORTALITY	P. 58
FIGURE 11	DEEP-WATER COMPLEX, WEEKLY GROUND FISH HARVEST	P. 59
FIGURE 12	DEEP-WATER COMPLEX, WEEKLY HALIBUT MORTALITY	P. 60
FIGURE 13	2001 AND 2002 DISCARDS BY SECTOR	P. 61
FIGURE 14	2001 AND 2002 FISHERIES WITH HIGHEST DISCARD RATES	P. 62

GULF OF ALASKA CATCH AND DISCARD TABLES: 2003

TABLE 37	ALL GEAR ALL MODES ALL TARGETS	P. 65
TABLE 38	TRAWL CATCHER/PROCESSOR ALL TARGETS	P. 66
TABLE 39	TRAWL CATCHER/PROCESSOR ARROWTOOTH FLOUNDER	P. 67

TABLE 40	TRAWL CATCHER/PROCESSOR FLATHEAD SOLE	P. 68
TABLE 41	TRAWL CATCHER/PROCESSOR REX SOLE	P. 69
TABLE 42	TRAWL CATCHER/PROCESSOR PACIFIC COD	P. 70
TABLE 43	TRAWL CATCHER/PROCESSOR ROCKFISH	P. 71
TABLE 44	TRAWL SHORESIDE ALL TARGETS	P. 72
TABLE 45	TRAWL SHORESIDE BOTTOM POLLOCK	P. 73
TABLE 46	TRAWL SHORESIDE MIDWATER POLLOCK	P. 74
TABLE 47	TRAWL SHORESIDE PACIFIC COD	P. 75
TABLE 48	TRAWL SHORESIDE DEEP-WATER FLATFISH	P. 76
TABLE 49	TRAWL SHORESIDE SHALLOW-WATER FLATFISH	P. 77
TABLE 50	TRAWL SHORESIDE ROCKFISH	P. 78
TABLE 51	TRAWL SHORESIDE OTHER	P. 79
TABLE 52	HOOK-AND-LINE CATCHER/PROCESSOR ALL TARGETS	P. 80
TABLE 53	HOOK-AND-LINE CATCHER/PROCESSOR PACIFIC COD	P. 81
TABLE 54	HOOK-AND-LINE CATCHER/PROCESSOR SABLEFISH	P. 82
TABLE 55	HOOK-AND-LINE SHORESIDE ALL TARGETS	P. 83
TABLE 56	HOOK-AND-LINE SHORESIDE PACIFIC COD	P. 84
TABLE 57	HOOK-AND-LINE SHORESIDE ROCKFISH	P. 85
TABLE 58	HOOK-AND-LINE SHORESIDE SABLEFISH	P. 86
TABLE 59	HOOK-AND-LINE SHORESIDE OTHER	P. 87
TABLE 60	POT ALL TARGETS	P. 88
TABLE 61	POT SHORESIDE PACIFIC COD	P. 89
TABLE 62	JIG SHORESIDE PACIFIC COD	P. 90
TABLE 63	JIG SHORESIDE ROCKFISH	P. 91

APPENDIX 3.

COMMUNITY DEVELOPMENT QUOTA (CDQ)

CATCH AND DISCARD TABLES: 2003

TABLE 64	ALL GEAR ALL MODES ALL TARGETS	P. 94
TABLE 65	TRAWL CATCHER/PROCESSOR MIDWATER POLLOCK	P. 95
TABLE 66	TRAWL CATCHER/PROCESSOR YELLOWFIN SOLE	P. 96
TABLE 67	H&L CATCHER/PROCESSOR PACIFIC COD	P. 97
TABLE 68	POT SHORESIDE SABLEFISH	P. 98

1.0 Introduction

This report updates the 2002 Alaska Marine Conservation Council (AMCC) sponsored report, Discards in the North Pacific Groundfish Fisheries 2002. It documents the amounts and sources of groundfish, crab, halibut, herring and salmon discards in commercial groundfish fisheries in the Bering Sea/ Aleutian Islands (BSAI) and the Gulf of Alaska (GOA) during calendar year 2003.

Appendix 1 includes tables for the BSAI target fisheries, Appendix 2 has tables for GOA target fisheries and Appendix 3 includes tables for Community Development Quota (CDQ) groundfish fisheries.

A summary table below shows the total groundfish harvest, groundfish discards and prohibited species discards for years 1997 through 2003. As predicted in the 1998 version of this report, implementation of the Improved Retention/ Improved Utilization program contributed to substantial declines in groundfish discards. However, 1999 showed an increase, followed by a slight decrease in 2000. It wasn't until 2001 that another substantial decrease in groundfish discards occurred. 2001 discards were 70 million pounds less than in 2000. In 2002, the total groundfish discard rate increased from 6.5% to 7.1% (261 million pounds to 299 million pounds), resulting from increased discard rates in the two largest target fisheries, pollock and Pacific cod; in 2003, decreased discard rates in pollock led to a slight decrease in the overall rate, to 7.0%.

TABLE 1. * ALASKA SUMMARY	1997	1998	1999	2000	2001	2002	2003
Total Groundfish Catch (metric tons (mt))	1,940,764	1,774,489	1,527,219	1,672,261	1,831,197	1,924,256	1,970,496
Total Groundfish Discards (mt)	292,413	149,606	148,946	150,576	118,647	135,952	137,976
Groundfish Discards (pounds)	644,654,000	329,822,000	328,368,000	331,961,000	261,568,000	299,720,000	304,182,000
Percent Groundfish Discarded	15.1%	8.4%	9.8%	9.0%	6.5%	7.1%	7.0%
Halibut Mortality (pounds)	14,620,000	14,087,000	14,414,000	13,558,000	13,673,000	13,688,000	13,051,000
Herring (pounds)	2,515,000	1,797,000	1,989,000	1,137,000	608,000	308,000	2,444,000
Chinook Salmon (numbers)	63,231	70,000	43,492	33,825	53,055	50,433	67,867
Other Salmon (numbers)	66,578	81,580	53,792	68,532	63,380	81,772	199,291
Red King Crab (numbers)	74,634	49,191	94,022	115,682	80,909	133,832	105,509
Other King Crab (numbers)	29,093	43,220	61,879	36,914	36,284	62,477	151,438
Bairdi Tanner Crab (numbers)	2,262,152	1,643,587	996,764	1,254,100	1,258,219	1,404,762	1,223,117
Other Tanner Crab (numbers)	5,654,941	4,633,578	1,604,354	3,314,970	2,043,627	1,501,745	787,832

* Table 1 does not include catch and discards from CDQ groundfish fisheries. Halibut, herring, salmon and crab discards are in addition to groundfish discards.

Discards in the North Pacific Groundfish Fisheries, 2003

The rate changes in “percent groundfish discarded” closely track those for pollock, which is by far the dominant species in Alaskan groundfish catch. Table 2 shows these details.

It is the opinion of the author that the accuracy of observer estimates of discards is suspect in high-volume, low-discard rate fisheries and that there may be no real significant difference, for example, among rates estimated for pollock over the last 3 years.

TABLE 2. POLLOCK	1997	1998	1999	2000	2001	2002	2003
CATCH (mt)							
BSAI	1,060,641	1,040,268	889,337	1,019,186	1,247,048	1,332,380	1,340,712
GULF	89,667	125,288	95,420	72,845	72,028	51,844	50,359
TOTAL	1,150,308	1,165,555	984,758	1,092,031	1,319,076	1,384,224	1,391,071
DISCARDS (mt)							
BSAI	92,425	16,060	28,244	21,984	17,355	20,471	16,416
GULF	6,954	1,326	1,894	2,086	721	1,094	1,022
TOTAL	99,379	17,386	30,138	24,070	18,076	21,565	17,438
DISCARD RATE							
BSAI	8.71%	1.54%	3.18%	2.16%	1.39%	1.54%	1.22%
GULF	7.76%	1.06%	1.98%	2.86%	1.00%	2.11%	2.03%
TOTAL	8.64%	1.49%	3.06%	2.20%	1.37%	1.56%	1.25%
POLLOCK HARVEST AS % OF TOTAL GROUND FISH							
	59.27%	65.68%	64.48%	65.30%	72.03%	71.94%	70.59%

2.0 Data sources and Methodology

In previous reports, the data source was the National Marine Fisheries Service (NMFS) “best blend” data provided by the Alaska Regional Office. In 2003 NMFS supplied similar data from a revamped and improved data system. Its description can be found at: <http://www.fakr.noaa.gov/sustainablefisheries/catchaccounting.htm>.

In this report, sharpchin rockfish is no longer grouped with northern rockfish, but included in the “other rockfish” category. This follows NMFS management and database changes.

Numbers may differ slightly from those in NMFS annual reports posted on NMFS Alaska Fisheries Science Center webpages, for several reasons. First, slightly different methodologies were used in assigning targets in the data provided to the author (that data is in the format used for in-season fisheries management). Second, small amounts of catch in unassigned categories were not included in this report. Finally, data for categories with fewer than three processors were not provided to the author, due to NMFS confidentiality constraints.

2.1 Discard Mortality Rates

The assumed mortality rate for all discarded species except halibut continues to be 100%. The International Pacific Halibut Commission (IPHC) determines halibut mortality rates, based on observer sampling data from recent years. Information on these rates can be found at: http://www.iphc.washington.edu/halcom/research/bycatch/dmr99_00.pdf.

3.0 Managing Entities

The managing entities for groundfish fisheries in the North Pacific include NMFS, the North Pacific Fishery Management Council (NPFMC), ADF&G, and the IPHC. The NPFMC develops management policies and recommends harvest guidelines. NMFS is responsible for day-to-day management of fisheries and regulatory development. ADF&G manages groundfish fisheries in state waters. The IPHC provides information and recommendations about halibut bycatch issues. Information about these agencies can be found at:

NMFS: <http://www.fakr.noaa.gov/>

NPFMC: <http://www.fakr.noaa.gov/npfmc/default.htm>

ADF&G: <http://www.adfg.state.ak.us/>

IPHC: <http://www.iphc.washington.edu/halcom/default.htm>

4.0 General Causes of Discards

This issue was comprehensively discussed in the 1998 report (p. 3). Regulatory discards continue to be a significant component of discards, although an exact accounting is beyond the scope of this series. In 2002 there were 55 inseason actions where a species or species group became “bycatch only” to one or more gear groups in a fisheries management area (22 in the BSAI and 33 in the Gulf of Alaska). In 2003 there were 59 such actions (27 in the BSAI and 32 in the Gulf of Alaska). These closures can result from a groundfish species or species groups’ catch limit being reached, or that of an associated prohibited species cap such as for salmon, halibut or crab. In 2003, 11 of the BSAI closures and six of the Gulf closures occurred because a prohibited species cap was reached. Closures can last year-round or between fisheries openings and they can apply to entire areas or subareas, and affect one or more gear types. During these periods, the closed species can be retained according to a maximum retainable bycatch limit, or MRB. Despite such “bycatch only” closures being in effect, it is sometimes necessary for NMFS to make a groundfish species or species group prohibited to retention in certain areas when its Total Allowable Catch (TAC) is exceeded. In 2003 there were six such closures.

5.0 Improved Retention/Improved Utilization (IR/IU)

Details of this program were described in the 2001 version of this series. The most recent NPFMC actions on this issue can be found at: http://www.fakr.noaa.gov/npfmc/current_issues/bycatch/bycatch.htm.

6.0 Prohibited Species Donation Program

Details of this program were described in the 2001 version of this series. Regulations are found at: <http://www.fakr.noaa.gov/regs/679b26.pdf>.

7.0 Other Management Actions Affecting Fisheries Bycatch

The 2001 version of this report discussed measures in the 1990's specifically intended to control bycatch, as well as the dramatic affect of the American Fisheries Act (1999) on pollock fisheries. Also initially implemented in 1999 were the first RPAs (Reasonable and Prudent Alternatives) for the protection of Steller sea lions. The RPAs dispersed pollock and Atka mackerel fishing effort both temporally and spatially by establishing new quotas and seasons, and established conservation zones in the Bering Sea, Aleutian Islands and Gulf of Alaska. Subsequent Steller sea lion protection measures similarly affected Pacific cod fisheries.

8.0 CDQ Fisheries

This program was described in the 2002 version of this series. More information can be found at: <http://www.fakr.noaa.gov/cdq/default.htm>.

Some 2003 CDQ information is unavailable in this report because CDQ data is in a different format than open-access groundfish and prohibited species data.

9.0 Review of 2002-2003 Data

Information from year 2002 is included in this section for purposes of comparison.

9.1 BERING SEA/ ALEUTIAN ISLANDS

- Groundfish discards in 2002 were 250 million pounds (mp) or 6.5% of the total harvest; in 2003 they were 242 mp or 6.2% of the harvest.
- Trawl fisheries accounted for 92.6% of the total harvest and 85.4% of discards in 2002; and 92.8% of total harvest and 85.4% of discards in 2003.
- Trawl catcher/processors accounted for 45.6% of the total harvest and 77.8% of discards in 2002; and 45.0% of total harvest and 76.1% of discards in 2003.
- Shoreside trawl catcher vessels accounted for 39.1% of the total harvest and 7.3% of discards in 2002; and 39.5% of harvest and 9.0% of discards in 2003.
- Fixed gear accounted for 7.4% of the total harvest and 14.6% of discards in 2002; and 8.2% of total harvest and 14.6% of discards in 2003.
- Salmon bycatch totaled 116,397 fish in 2002 and 241,759 fish in 2003.
- Crab bycatch of all kinds was 2.9 million crabs in 2002 and 2.1 million crabs in 2003.
- Halibut bycatch mortality was 4,068 mt in 2002 and 3,779 mt in 2003.

Catcher/processor Mid-water trawl pollock fishery

- 2002 Total groundfish harvest: 518,467 mt. Total groundfish discarded: 1,946 mt (0.4%). Total pollock discarded: 172 mt (0.0%).
- 2003 Total groundfish harvest: 524,080 mt. Total groundfish discarded: 1,858 mt (0.04%). Total pollock discarded: 183 mt (0.0%).
- Salmon bycatch: 18,317 fish in 2002; 38,601 fish in 2003.

CDQ Catcher/processor Mid-water trawl pollock fishery.

- 2002 Total groundfish harvest: 125,507 mt. Total groundfish discarded: 759 mt (0.6%). Total pollock discarded: 0 mt (0.0%)
- 2003 Total groundfish harvest: 149,971 mt. Total groundfish discarded: 0 mt (0.0%). Total pollock discarded: 0 mt (0.0%)
- Salmon bycatch: 3,734 fish in 2002; 7,852 fish in 2003.

Catcher/processor Bottom trawl pollock fishery. At its June 1998 meeting, the NPFMC voted to prohibit bottom trawling for pollock effective January 1, 1999. Some tonnage continues to show up in this target because the target definition depends on the amount of bycatch, rather than only the gear used. There was a substantial decrease in this category in 2002 and in 2003.

- 2002 Total groundfish harvest: 4,418 mt. Total groundfish discarded: 352 mt (8.0%). Total pollock discarded: 87 mt (2.3%). Largest discard: yellowfin sole, 109 mt (59.3%).
- 2003 Total groundfish harvest: 3,736 mt. Total groundfish discarded: 18 mt (0.5%). Total pollock discarded: 0 mt (0%). Largest discard: Pacific ocean perch, 11 mt (7.0%).

CDQ Catcher/processor Bottom trawl pollock fishery

- 2002 Total groundfish harvest: 4,378 mt. Total groundfish discarded: 185 mt (4.2%). Total pollock discarded: 0 mt (0%).
- 2003: This category not provided due to confidentiality restraints.

Catcher/processor Yellowfin sole trawl fishery.

- 2002 Total groundfish harvest: 114,574 mt. Total groundfish discarded: 34,662 mt (30.3%). Total yellowfin sole discarded: 7,829 mt (12.1%).
- 2003 Total groundfish harvest: 103,624 mt. Total groundfish discarded: 28,553 mt (27.6%). Total yellowfin sole discarded: 7,664 mt (12.0%).
- Halibut bycatch mortality: 2002 - 1,017 mt; 2003 - 704 mt.
- Crab bycatch: 2002 - 981,844 crabs. 2003 - 598,138 crabs.

CDQ Catcher/processor Yellowfin sole trawl fishery.

- 2002 Total groundfish harvest: 1,946 mt. Total groundfish discarded: 139 mt (7.2%). Total yellowfin sole discarded: 0 mt (0.0%).
- 2003 Total groundfish harvest: 5,779 mt. Total groundfish discarded: 0 mt (0.0%). Total yellowfin sole discarded: 0 mt (0.0%).
- Halibut bycatch mortality: 2002 - 33 mt; 2003 - 61 mt.
- Crab bycatch: 2002 - 19,043 crabs; 2003 - 18,492 crabs.

Catcher/processor Rock sole trawl fishery. Traditionally this fishery was mostly a roe fishery and males were discarded. Because of NMFS' inseason target definitions, a portion of the catch in the fishery ends up assigned to the yellowfin sole target category.

- 2002 Total groundfish harvest: 41,446 mt. Total groundfish discarded: 17,535 mt (42.3%). Total Rock sole discarded: 6,960 mt (34.8%).
- 2003 Total groundfish harvest: 35,786 mt. Total groundfish discarded: 13,026 mt (36.4%). Total Rock sole discarded: 6,456 mt (35.0%).
- Halibut bycatch mortality: 2002 - 723 mt; 2003 - 889 mt.
- Crab bycatch: 2002 - 532,078 crab; 2003 - 332,283 crab.

Catcher/processor Pacific cod trawl fishery.

- 2002 Total groundfish harvest: 39,304 mt. Total groundfish discarded: 11,964 mt (30.4%). Total Pacific cod discarded: 459 mt (2.3%). Largest discard: rock sole - 2,987 mt (55.9%).
- 2003 Total groundfish harvest: 42,745 mt. Total groundfish discarded: 16,131 mt (37.7%). Total Pacific cod discarded: 136 mt (0.7%). Largest discard: pollock - 4,181 mt (69.0%).
- Halibut bycatch mortality: 2002 - 616 mt; 2003 - 511 mt.
- Crab bycatch: 2002 - 334,851 crab; 2003 - 207,661 crab.

Catcher/processor Atka mackerel trawl fishery.

- 2002 Total groundfish harvest: 47,084 mt. Total groundfish discarded: 12,184 mt (25.9%). Total Atka mackerel (largest discard) discarded: 6,845 mt (17.1%).
- 2003 Total groundfish harvest: 57,289 mt. Total groundfish discarded: 16,036 mt (28.0%). Total Atka mackerel (largest discard) discarded: 9,039 mt (19.0%).

CDQ Catcher/processor Atka mackerel trawl fishery.

- 2002 Total groundfish harvest: 3,985 mt. Total groundfish discarded: 66 mt (1.6%). Total Atka mackerel discarded: 0 mt (0.0%).
- This fishery does not appear in 2003 available data.

Shoreside Mid-water trawl pollock fishery.

- 2002 Total groundfish harvest: 649,424 mt. Total groundfish discarded: 744 mt (0.1%). Total Pollock discarded: 91 mt (0.0%).
- 2003 Total groundfish harvest: 648,744 mt. Total groundfish discarded: 1,076 mt (0.2%). Total Pollock discarded: 256 mt (0.0%).
- Salmon bycatch: 2002 - 73,863 fish. 2003 - 174,497 fish.

Mothership Mid-water trawl pollock fishery.

- 2002 Total groundfish harvest: 129,699 mt. Total groundfish discarded: 327 mt (0.3%). Total pollock discarded: 0 mt (0.0%).
- 2003 Total groundfish harvest: 130,156 mt. Total groundfish discarded: 335 mt (0.3%). Total pollock discarded: 0 mt (0.0%).
- Salmon bycatch: 2002 - 17,202 fish; 2003 - 16,219 fish.

CDQ Shoreside and Mothership Mid-water trawl pollock fishery. Not available due to confidentiality restraints (fewer than 3 companies).

Shoreside Pacific cod trawl fishery.

- 2002 Total groundfish harvest: 38,190 mt. Total groundfish discarded: 7,538 mt (19.7%). Total Pacific cod discarded: 387 mt (1.3%). Largest discard pollock: 3,275 mt (78.4%).
- 2003 Total groundfish harvest: 46,986 mt. Total groundfish discarded: 8,490 mt (18.1%). Total Pacific cod discarded: 291 mt (0.8%). Largest discard: pollock - 2,411 mt (73.7%).
- Halibut bycatch mortality: 2002 - 444 mt; 2003 - 716 mt.
- Crab bycatch: 2002 - 88,450 crab; 2003 - 65,828 crab.

Catcher/processor Pacific cod Hook-and-Line fishery. More than half of the discards consist of “other species”, mostly skates and sculpins.

- 2002 Total groundfish harvest: 110,175 mt. Total groundfish discarded: 14,151 mt (12.8%). Total Pacific cod discarded: 1,814 mt (2.0%). Largest discard: “other species” - 9,618 mt (76.4%).
- 2003 Total groundfish harvest: 118,171 mt. Total groundfish discarded: 14,044 mt (11.9%). Total Pacific cod discarded: 1,798 mt (1.9%). Largest discard: “other species” - 9,426 mt (63.6%).
- Halibut bycatch mortality: 2002 - 576 mt; 2003 - 487 mt.

CDQ Catcher/processor Pacific cod Hook-and-Line fishery.

- 2002 Total groundfish harvest: 16,077 mt. Total groundfish discarded: 2,138 mt (13.3%). Total Pacific cod discarded: 308 mt (2.3%).
- 2003 Total groundfish harvest: 15,830 mt. Total groundfish discarded: 0 mt (0.0%). Total Pacific cod discarded: 0 mt (0.0%).
- Halibut bycatch mortality: 2002 - 53 mt; 2003 - 61 mt.

Catcher/processor and Shoreside catcher vessel Pacific cod Pot fisheries.

- 2002 Total groundfish harvest: 14,266 mt. Total groundfish discarded: 798 mt (5.6%).
- 2003 Total groundfish harvest: 22,648 mt. Total groundfish discarded: 806 mt (3.6%).
- Halibut bycatch mortality: 2002 - 9 mt; 2003 - 3 mt.
- Crab bycatch: 2002 - 364,177 crab; 2003 - 114,182 crab.

9.2 GULF OF ALASKA

- Groundfish discards in 2002 were 49.3 million pounds (mp) or 13.5% of the groundfish harvest; in 2003, discards were 61.9 mp or 15.1% of the groundfish harvest.
- Trawl fisheries accounted for 77.2% of the catch and 87.8% of the discards in 2002; and 74.1% of the catch and 91.7% of the discards in 2003.
- Trawl catcher/processors accounted for 20.6% of the catch and 45.1% of the discards in 2002; and 23.2% of the catch and 57.2% of the discards in 2003.
- Shoreside trawl catcher vessels accounted for 56.6% of the catch and 45.1% of the discards in 2002; and 50.9% of the catch and 34.5% of the discards in 2003.

Discards in the North Pacific Groundfish Fisheries, 2003

- Fixed gear accounted for 22.8% of the catch and 12.2% of the discards in 2002; and 25.9% of the catch and 8.3% of the discards in 2003.
- Salmon bycatch totaled 15,807 fish in 2002 and 25,399 fish in 2003.
- Crab bycatch of all species was 187,817 crabs in 2002, and 148,548 crabs in 2003.
- Halibut bycatch mortality was 2,197 mt in 2002 and 2,348 mt in 2003.

Shoreside Mid-water trawl pollock fishery.

- 2002 Total groundfish harvest: 41,853 mt. Total groundfish discarded: 486 mt (1.2%). Total pollock discarded: 297 mt (0.7%).
- 2003 Total groundfish harvest: 46,875 mt. Total groundfish discarded: 1,030 mt (2.2%). Total pollock discarded: 737 mt (1.6%).
- Salmon bycatch: 2002 - 4,385 fish; 2003 - 9,841 fish.

Catcher/processor Rex sole trawl fishery.

- 2002 Total groundfish harvest: 7,845 mt. Total groundfish discarded: 4,286 mt (54.6%). Total Rex sole discarded: 32 mt (1.5%). Largest discard: arrowtooth flounder 3,477 mt (89.0%).
- 2003 Total groundfish harvest: 10,313 mt. Total groundfish discarded: 6,737 mt (65.3%). Total Rex sole discarded: 50 mt (2.4%). Largest discard: arrowtooth flounder 5,621 mt (96.7%).
- Crab bycatch: 2002 - 7,557 crab; 2003 - 28,583 crab.

Shoreside Pacific cod trawl fishery.

- 2002 Total groundfish harvest: 14,753 mt. Total groundfish discarded: 1,609 mt (10.9%). Total Pacific cod discarded: 400 mt (3.1%). Largest discard: pollock 497 mt (75.7%).
- 2003 Total groundfish harvest: 14,377 mt. Total groundfish discarded: 1,031 mt (7.2%). Total Pacific cod discarded: 163 mt (1.3%). Largest discard: arrowtooth flounder - 411 mt (77.7%).
- Halibut bycatch mortality: 2002 - 185 mt; 2003 - 403 mt.

Catcher/processor and Shoreside catcher vessel Pacific cod Pot fisheries.

- 2002 Total groundfish harvest: 7,918 mt. Total groundfish discarded: 276 mt (3.5%). Total Pacific cod discarded: 80 mt (1.0%). Largest discard: "other groundfish" 174 mt (87.0%).
- 2003 Total groundfish harvest: 21,041 mt. Total groundfish discarded: 434 mt (2.1%). Total Pacific cod discarded 25 mt (0.1%). Largest discard: "other groundfish" 377 mt (90.9%).
- Halibut bycatch mortality: 2002 - 2 mt; 2003 - 14 mt.
- Crab bycatch: 2002 - 98,435 crab; 2003 - 10,068 crab.

Discards in the North Pacific Groundfish Fisheries, 2003

Table 3. Comparison of Discarded, Retained and Total Catch by Component in
Bering Sea/ Aleutian Islands, 2002-2003

<u>GROUND FISH DISCARDS</u>	2002		2003	
	<u>mt</u>	<u>% of Tot</u>	<u>mt</u>	<u>% of Tot</u>
Trawl Catcher Processor	88,384	77.8%	83,580	76.1%
Shoreside trawl Catcher Vessel	8,282	7.3%	9,888	9.0%
Mothership Trawl Catcher Vessel	327	0.3%	335	0.3%
Hook & Line Catcher Processor	14,837	13.1%	14,611	13.3%
Hook & Line Shoreside Catcher Vessel	920	0.8%	482	0.4%
All Pot Vessels	829	0.7%	1004	0.9%
TOTAL	113,579	100.0%	109,900	100.0%
<u>GROUND FISH RETAINED CATCH</u>	<u>mt</u>	<u>% of Tot</u>	<u>mt</u>	<u>% of Tot</u>
Trawl Catcher Processor	714,139	43.4%	719,363	43.0%
Shoreside trawl Catcher Vessel	679,953	41.3%	695,543	41.5%
Mothership Trawl Catcher Vessel	137,407	8.4%	129,821	7.8%
Hook & Line Catcher Processor	98,540	6.0%	106,377	6.4%
Hook & Line Shoreside Catcher Vessel	1,196	0.1%	964	0.1%
All Pot Vessels	13,658	0.8%	22,343	1.3%
TOTAL	1,644,894	100.0%	1,674,409	100.0%
<u>GROUND FISH TOTAL CATCH</u>	<u>mt</u>	<u>% of Tot</u>	<u>mt</u>	<u>% of Tot</u>
Trawl Catcher Processor	802,523	45.6%	802,943	45.0%
Shoreside trawl Catcher Vessel	688,234	39.1%	705,431	39.5%
Mothership Trawl Catcher Vessel	137,734	7.8%	130,156	7.3%
Hook & Line Catcher Processor	113,377	6.4%	120,987	6.8%
Hook & Line Shoreside Catcher Vessel	2,116	0.1%	1,446	0.1%
All Pot Vessels	14,487	0.8%	23,346	1.3%
TOTAL	1,758,473	100.0%	1,784,309	100.0%

Discards in the North Pacific Groundfish Fisheries, 2003

Table 4. Comparison of Discarded, Retained and Total Catch by Component in
Gulf of Alaska, 2002-2003

<u>GROUND FISH DISCARDS</u>	2002		2003	
	<u>mt</u>	<u>% of Tot</u>	<u>mt</u>	<u>% of Tot</u>
Trawl Catcher Processor	9,556	42.7%	16,052	57.2%
Shoreside trawl Catcher Vessel	10,095	45.1%	9,695	34.5%
Mothership Trawl Catcher Vessel	0	0.0%	0	0.0%
Hook & Line Catcher Processor	968	4.3%	748	2.7%
Hook & Line Shoreside Catcher Vessel	1,477	6.6%	1,146	4.1%
All Pot Vessels	276	1.2%	434	1.5%
TOTAL	22,373	100.0%	28,076	100.0%
<u>GROUND FISH RETAINED CATCH</u>	<u>mt</u>	<u>% of Tot</u>	<u>mt</u>	<u>% of Tot</u>
Trawl Catcher Processor	24,525	17.2%	26,320	17.0%
Shoreside trawl Catcher Vessel	83,444	58.4%	83,259	53.7%
Mothership Trawl Catcher Vessel	0	0.0%	0	0.0%
Hook & Line Catcher Processor	9,884	6.9%	7,611	4.9%
Hook & Line Shoreside Catcher Vessel	17,357	12.2%	16,716	10.8%
All Pot Vessels	7,640	5.3%	21,041	13.6%
TOTAL	142,851	100.0%	154,947	100.0%
<u>GROUND FISH TOTAL CATCH</u>	<u>mt</u>	<u>% of Tot</u>	<u>mt</u>	<u>% of Tot</u>
Trawl Catcher Processor	34,081	20.6%	42,372	23.2%
Shoreside trawl Catcher Vessel	93,539	56.6%	92,954	50.9%
Mothership Trawl Catcher Vessel	0	0.0%	0	0.0%
Hook & Line Catcher Processor	10,853	6.6%	8,359	4.6%
Hook & Line Shoreside Catcher Vessel	18,834	11.4%	17,862	9.8%
All Pot Vessels	7,918	4.8%	21,041	11.5%
TOTAL	165,225	100.0%	182,589	100.0%

Discards in the North Pacific Groundfish Fisheries, 2003

Table 5. Comparison of Discarded, Retained and Total Catch by Component
In the *Bering Sea/Aleutian Islands and Gulf of Alaska Combined, 2002-2003*

<u>GROUND FISH DISCARDS</u>	2002		2003	
	<u>mt</u>	<u>% of Tot</u>	<u>mt</u>	<u>% of Tot</u>
Trawl Catcher Processor	97,940	72.0%	99,633	72.2%
Shoreside trawl Catcher Vessel	18,377	13.5%	19,583	14.2%
Mothership Trawl Catcher Vessel	327	0.2%	335	0.2%
Hook & Line Catcher Processor	15,805	11.6%	15,359	11.1%
Hook & Line Shoreside Catcher Vessel	2,397	1.8%	1,628	1.2%
All Pot Vessels	1,106	0.8%	1,438	1.0%
TOTAL	135,952	100.0%	137,976	100.0%
<u>GROUND FISH RETAINED CATCH</u>	<u>mt</u>	<u>% of Tot</u>	<u>mt</u>	<u>% of Tot</u>
Trawl Catcher Processor	738,664	41.3%	745,682	40.8%
Shoreside trawl Catcher Vessel	763,397	42.7%	778,802	42.6%
Mothership Trawl Catcher Vessel	137,407	7.7%	129,821	7.1%
Hook & Line Catcher Processor	108,425	6.1%	113,988	6.2%
Hook & Line Shoreside Catcher Vessel	18,553	1.0%	17,680	1.0%
All Pot Vessels	21,298	1.2%	43,384	2.4%
TOTAL	1,787,745	100.0%	1,829,357	100.0%
<u>GROUND FISH TOTAL CATCH</u>	<u>mt</u>	<u>% of Tot</u>	<u>mt</u>	<u>% of Tot</u>
Trawl Catcher Processor	836,604	43.5%	845,315	43.0%
Shoreside trawl Catcher Vessel	781,774	40.6%	798,385	40.6%
Mothership Trawl Catcher Vessel	137,734	7.2%	130,156	6.6%
Hook & Line Catcher Processor	124,230	6.5%	129,347	6.6%
Hook & Line Shoreside Catcher Vessel	20,950	1.1%	19,308	1.0%
All Pot Vessels	22,405	1.2%	44,387	2.3%
TOTAL	1,923,698	100.0%	1,966,898	100.0%

APPENDIX 1.

BERING SEA & ALEUTIAN ISLANDS

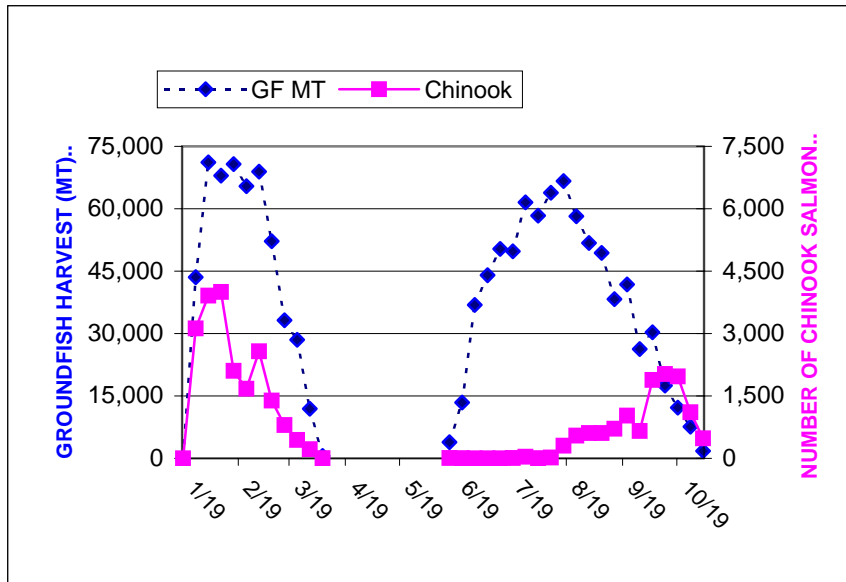
FIGURES 1-7

Appendix 1. Discards in the Bering Sea/Aleutian Islands, 2003: FIGURES 1 - 7

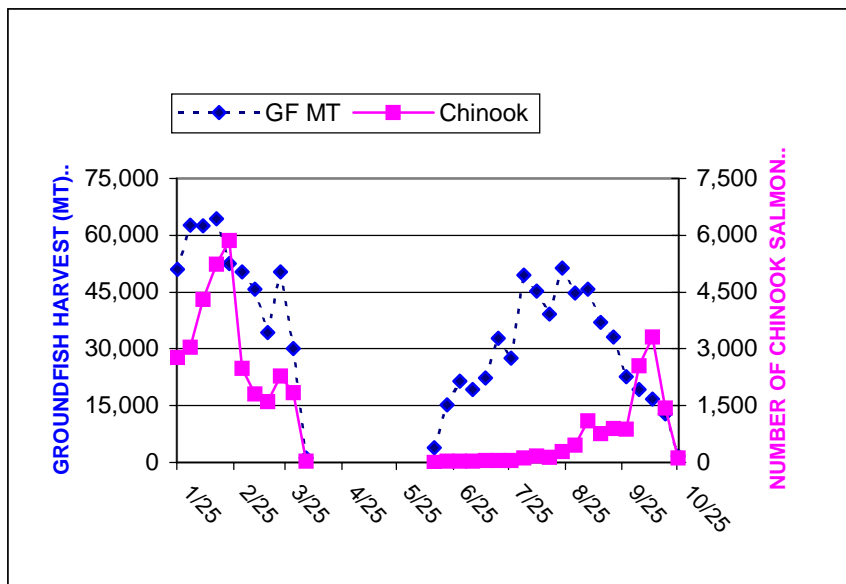
Appendix 1. Discards in the Bering Sea/Aleutian Islands, 2003: FIGURES 1 - 7

FIGURE 1. WEEKLY GROUNDFISH HARVEST AND CHINOOK SALMON BYCATCH BY VESSELS TARGETING POLLOCK WITH PELAGIC TRAWLS

2002



2003

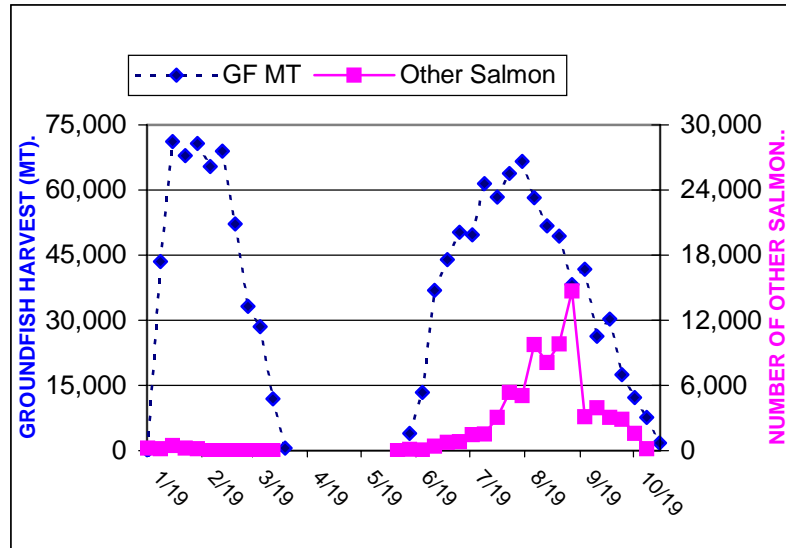


GROUNDFISH HARVESTED IN METRIC TONS (GF MT) INCLUDES TARGET AND NON-TARGET GROUNDFISH SPECIES

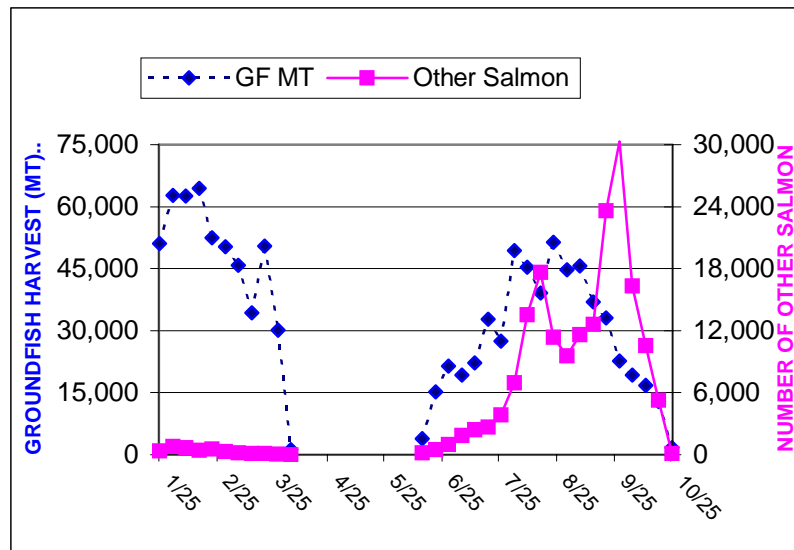
Appendix 1. Discards in the Bering Sea/Aleutian Islands, 2003: FIGURES 1 - 7

FIGURE 2. WEEKLY GROUNDFISH HARVEST AND “OTHER” SALMON BYCATCH BY VESSELS TARGETING POLLOCK WITH PELAGIC TRAWLS

2002



2003

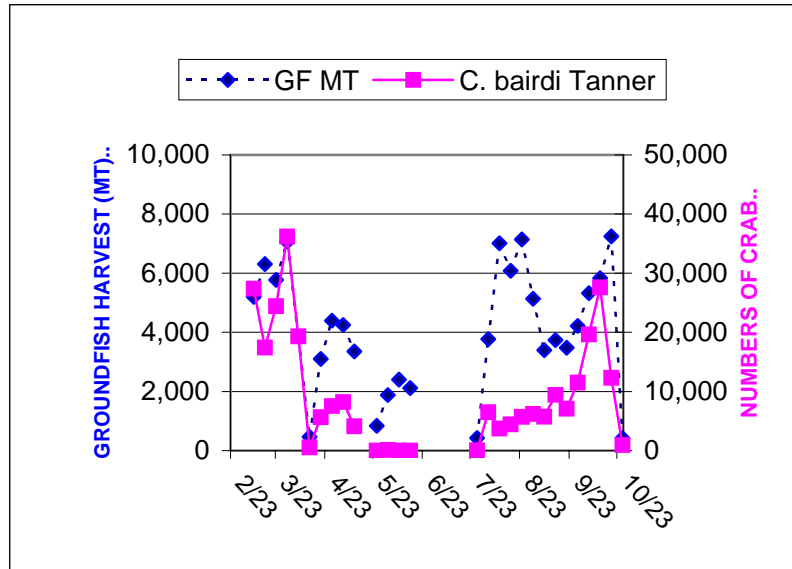


GROUNDFISH HARVESTED IN METRIC TONS (GF MT) INCLUDES TARGET AND NON-TARGET GROUNDFISH SPECIES

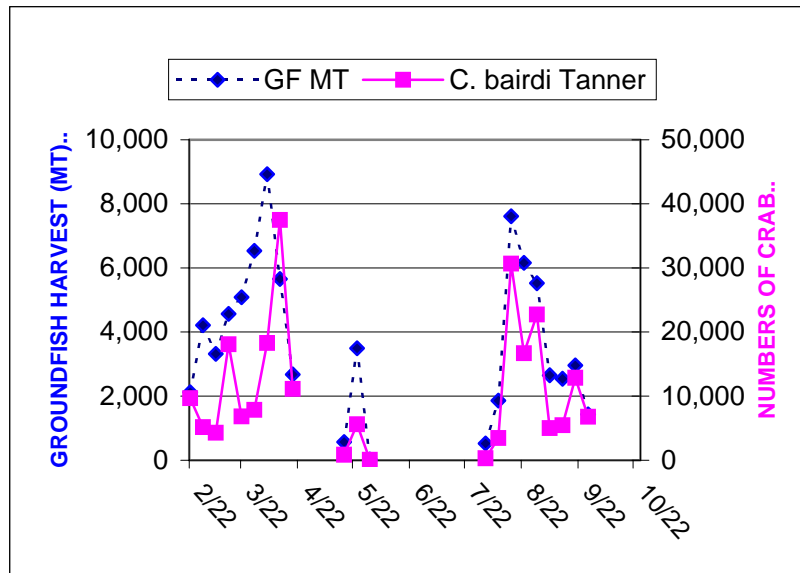
Appendix 1. Discards in the Bering Sea/Aleutian Islands, 2003: FIGURES 1 - 7

FIGURE 3. WEEKLY GROUND FISH HARVEST AND C. BAIRDI TANNER CRAB BYCATCH BY VESSELS TARGETING YELLOWFIN SOLE WITH TRAWLS

2002



2003

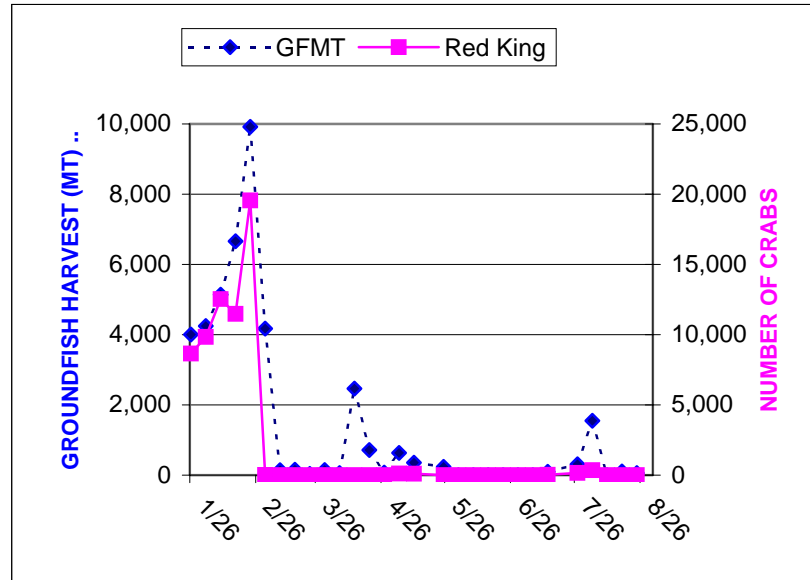


GROUND FISH HARVESTED IN METRIC TONS (GF MT) INCLUDES TARGET AND NON-TARGET GROUND FISH SPECIES

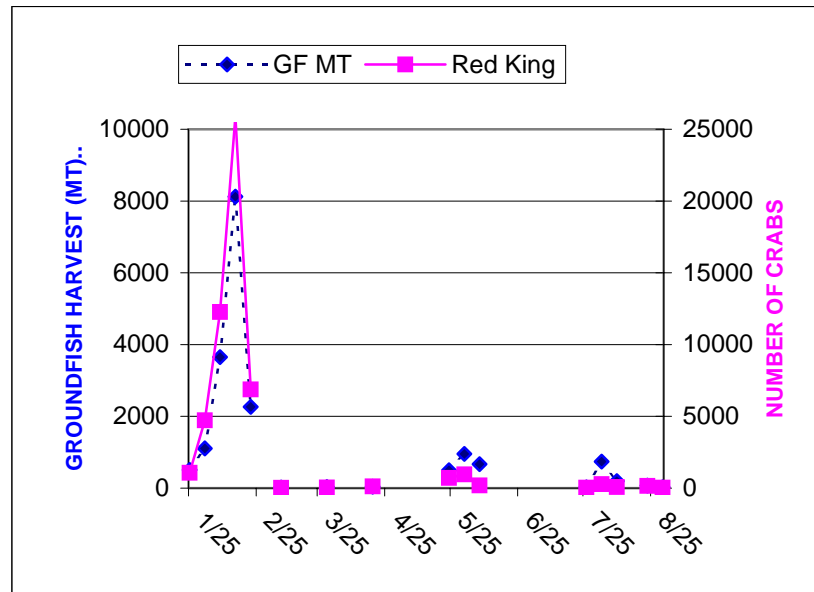
Appendix 1. Discards in the Bering Sea/Aleutian Islands, 2003: FIGURES 1 - 7

FIGURE 4. WEEKLY GROUNDFISH HARVEST AND RED KING CRAB BYCATCH BY VESSELS TARGETING ROCK SOLE WITH TRAWLS

2002



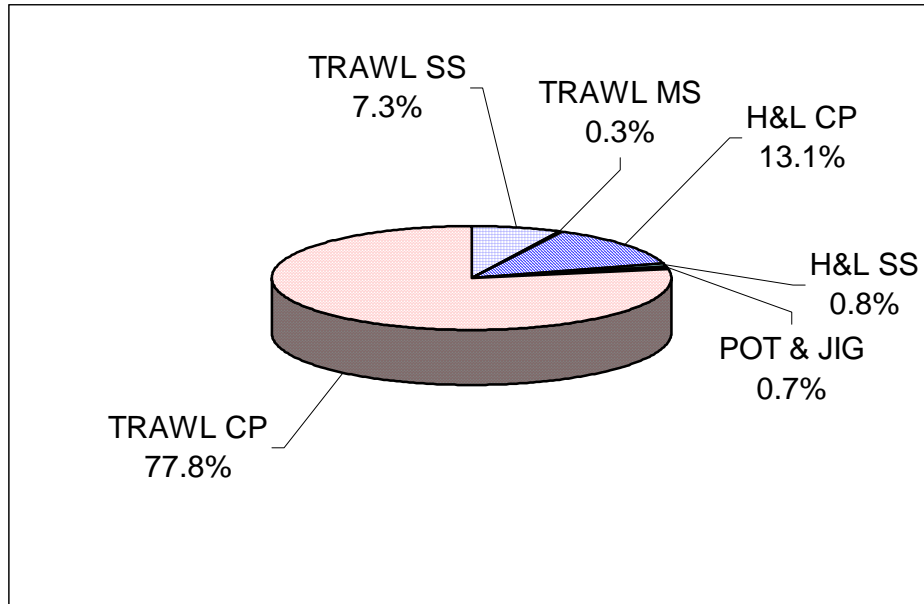
2003



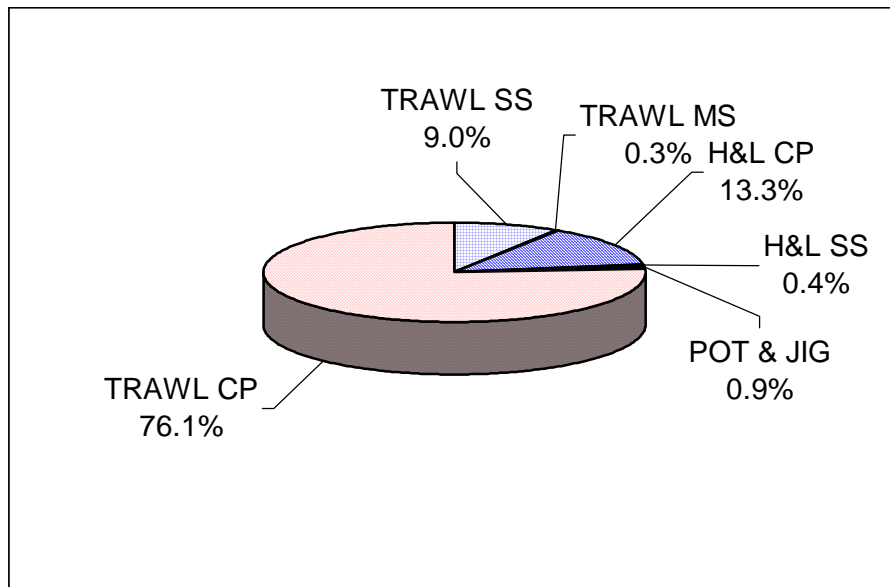
GROUNDFISH HARVESTED IN METRIC TONS (GF MT) INCLUDES TARGET AND NON-TARGET GROUNDFISH SPECIES

Appendix 1. Discards in the Bering Sea/Aleutian Islands, 2003: FIGURES 1 - 7

FIGURE 5. 2002 DISCARDS BY SECTOR: PERCENT OF TOTAL



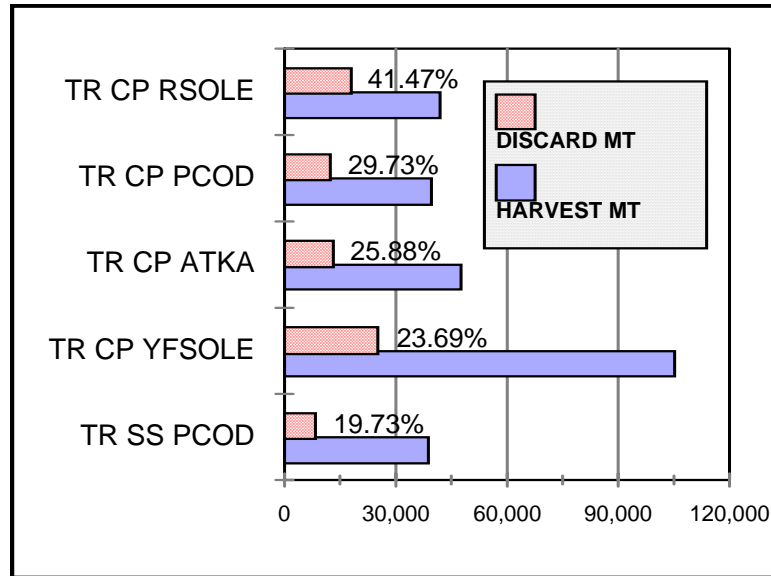
2003 DISCARDS BY SECTOR: PERCENT OF TOTAL



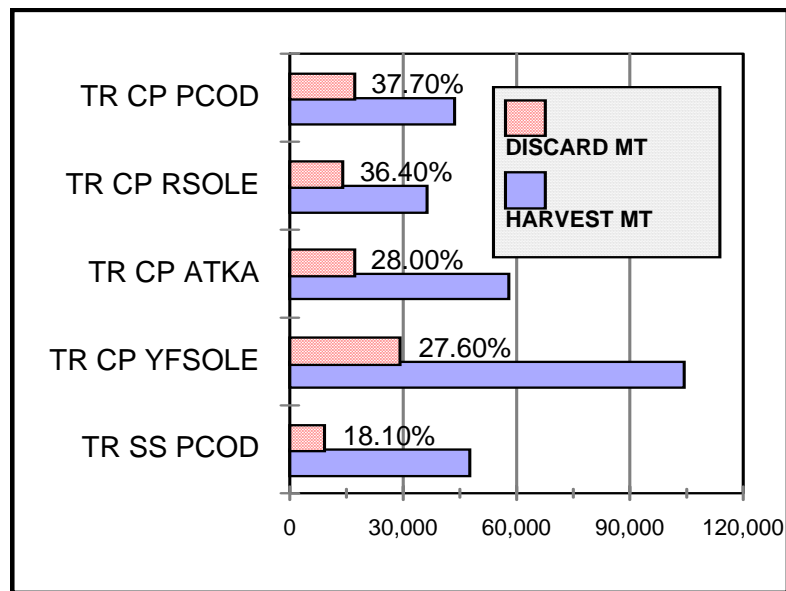
SS = SHORESIDE MS=MOTHERSHIP CP=CATCHER/PROCESSOR.
H&L= HOOK AND LINE

Appendix 1. Discards in the Bering Sea/Aleutian Islands, 2003: FIGURES 1 - 7

FIGURE 6. 2002 HIGH-VOLUME FISHERIES WITH HIGHEST DISCARD RATES



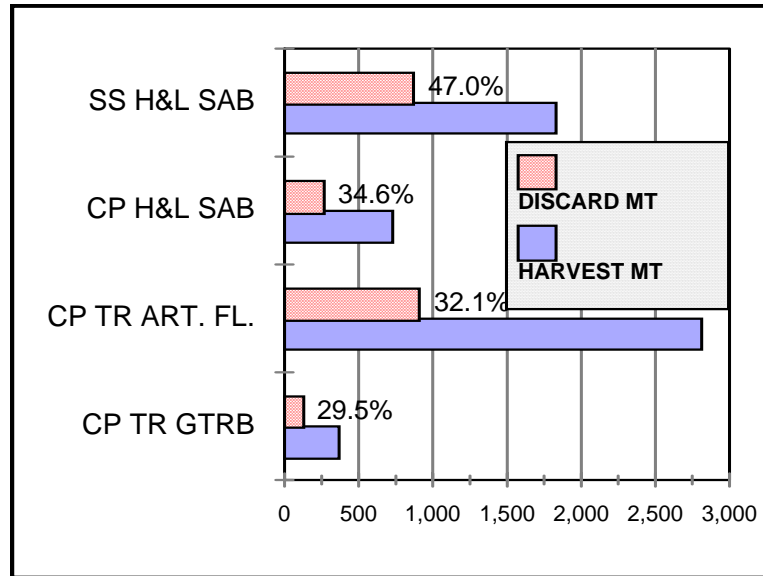
2003 HIGH-VOLUME FISHERIES WITH HIGHEST DISCARD RATES



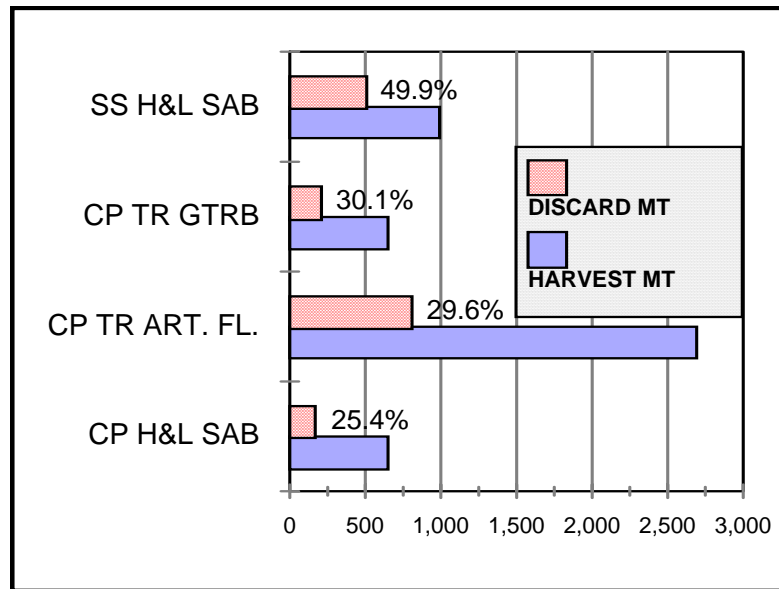
TR CP = TRAWL CATCHER/PROCESSORS
 TR SS = TRAWL SHORESIDE (CATCHER BOATS)
 RSOLE= ROCK SOLE
 PCOD = PACIFIC COD
 YFSOLE = YELLOWFIN SOLE

Appendix 1. Discards in the Bering Sea/Aleutian Islands, 2003: FIGURES 1 - 7

FIGURE 7. 2002 LOW-VOLUME FISHERIES WITH HIGHEST DISCARD RATES



2003 LOW-VOLUME FISHERIES WITH HIGHEST DISCARD RATES



TR CP = TRAWL CATCHER/PROCESSORS
 TR SS = TRAWL SHORESIDE (CATCHER BOATS)
 RSOLE= ROCK SOLE
 PCOD = PACIFIC COD
 YFSOLE = YELLOWFIN SOLE

Appendix 1. Discards in the Bering Sea/Aleutian Islands, 2003: FIGURES 1 - 7

APPENDIX 1.

BERING SEA & ALEUTIAN ISLANDS

CATCH AND DISCARD TABLES

2003

Appendix 1. Discards in the Bering Sea/Aleutian Islands, 2003: TABLES

TABLE 6.

2003 GROUND FISH SPECIES	AREA:		BSAI		Discard Rate	Rate/ Retain GF	Discard Pounds
	GEAR:	TYPE:	All	All			
	Harvest mt	Retained mt	Discarded mt				
Atka Mackerel	54,031	40,726	13,305	24.6%	0.008	29,333,000	
Pollock	1,340,712	1,324,296	16,416	1.2%	0.010	36,190,000	
Pacific Cod	190,998	188,000	2,998	1.6%	0.002	6,609,000	
Yellowfin sole	74,288	63,173	11,115	15.0%	0.007	24,505,000	
Rock sole	35,224	19,296	15,927	45.2%	0.010	35,114,000	
Flathead sole	13,739	9,911	3,828	27.9%	0.002	8,440,000	
Alaska Plaice	9,771	348	9,423	96.4%	0.006	20,774,000	
Other flatfish	2,694	1,005	1,690	62.7%	0.001	3,725,000	
Greenland turbot	3,162	2,404	758	24.0%	0.000	1,671,000	
Arrowtooth flounder	12,648	3,972	8,676	68.6%	0.005	19,127,000	
Pacific ocean perch	13,888	11,249	2,639	19.0%	0.002	5,818,000	
Northern rockfish	4,644	201	4,443	95.7%	0.003	9,794,000	
Shortraker/rougheye rockfish	255	184	71	27.9%	0.000	157,000	
Other rockfish	626	378	248	39.6%	0.000	547,000	
Sablefish	1,677	1,471	206	12.3%	0.000	453,000	
Other Species	26,108	7,950	18,158	69.5%	0.011	40,030,000	
TOTAL	1,784,465	1,674,565	109,900	6.2%	0.066	242,286,000	

PROHIBITED SPECIES	Discarded BYCATCH	Rate/ Retain GF	Discard Pounds
Halibut (mt)	9,080 mt	5 kg/mt	20,019,000
Halibut Mortality (mt)	3,779 mt	2 kg/mt	8,330,000
Herring (mt)	1,099 mt	1 kg/mt	2,423,000
C. bairdi Tanner crab	1,076,944 crab	0.643 indiv/mt	
Other Tanner crab	786,392 crab	0.470 indiv/mt	
Red king crab	105,421 crab	0.063 indiv/mt	
Other king crab	150,592 crab	0.090 indiv/mt	
Chinook salmon	52,358 salmon	0.031 indiv/mt	
Other salmon	189,401 salmon	0.113 indiv/mt	
Halibut and Herring Discard Pounds	10,753,000 pounds		
Crab and Salmon Discard Numbers	2,361,108 individuals		

Appendix 1. Discards in the Bering Sea/Aleutian Islands, 2003: TABLES

TABLE 9.

2003 GROUND FISH SPECIES	AREA:		BSAI			
	Harvest mt	Retained mt	Discarded mt	Discard Rate	Rate/ Retain GF	Discard Pounds
Atka Mackerel	0	0	0	-	-	0
Pollock	3,440	3,440	0	0.0%	0.000	0
Pacific Cod	38	38	0	0.0%	0.000	0
Yellowfin sole	0	0	0	-	0.000	0
Rock sole	20	16	4	19.8%	0.001	9,000
Flathead sole	13	11	1	10.9%	0.000	3,000
Alaska plaice	0	0	0	-	0.000	0
Other flatfish	3	3	0	1.8%	0.000	0
Greenland turbot	1	1	0	0.0%	0.000	0
Arrowtooth flounder	2	2	0	5.2%	0.000	0
Pacific ocean perch	158	147	11	7.0%	0.003	24,000
Northern rockfish	0	0	0	-	0.000	0
Shortraker/rougheye rockfish	0	0	0	-	0.000	0
Other rockfish	0	0	0	-	0.000	0
Sablefish	0	0	0	-	0.000	0
Other Species	60	58	2	2.6%	0.000	3,000
TOTAL	3,736	3,717	18	0.5%	0.005	40,000

PROHIBITED SPECIES	Discarded BYCATCH	Rate/ Retain GF	Discard Pounds
Halibut (mt)	0 mt	0 kg/mt	1,000
Halibut Mortality (mt)	0 mt	0 kg/mt	2,000
Herring (mt)	0 mt	0 kg/mt	0
C. bairdi Tanner crab	0 crab	0.000 indiv/mt	
Other Tanner crab	0 crab	0.000 indiv/mt	
Red king crab	0 crab	0.000 indiv/mt	
Other king crab	0 crab	0.000 indiv/mt	
Chinook salmon	550 salmon	0.148 indiv/mt	
Other salmon	26 salmon	0.007 indiv/mt	
Halibut and Herring Discard Pounds	2,000 pounds		
Crab and Salmon Discard Numbers	575 individuals		

Appendix 1. Discards in the Bering Sea/Aleutian Islands, 2003: TABLES

TABLE 12.

2003 GROUND FISH SPECIES	AREA: GEAR: TYPE: TARGET:		BSAI Trawl Catcher/processor Rockfish			
	Harvest mt	Retained mt	Discarded mt	Discard Rate	Rate/ Retain GF	Discard Pounds
Atka Mackerel	523	432	92	17.5%	0.008	202,000
Pollock	544	418	126	23.2%	0.010	278,000
Pacific Cod	255	255	0	0.0%	0.000	0
Yellowfin sole	0	0	0	-	0.000	0
Rock sole	6	0	6	100.0%	0.000	13,000
Flathead sole	14	11	4	26.4%	0.000	8,000
Alaska plaice	0	0	0	-	0.000	0
Other flatfish	13	9	4	28.5%	0.000	8,000
Greenland turbot	198	198	0	0.0%	0.000	0
Arrowtooth flounder	392	109	282	72.1%	0.023	623,000
Pacific ocean perch	10,569	10,420	148	1.4%	0.012	327,000
Northern rockfish	111	56	55	49.3%	0.005	121,000
Shortraker/rougheyeye rockfish	126	119	7	5.3%	0.001	15,000
Other rockfish	59	56	3	5.4%	0.000	7,000
Sablefish	34	34	0	0.0%	0.000	0
Other Species	134	4	130	97.1%	0.011	287,000
TOTAL	12,978	12,122	856	6.6%	0.071	1,888,000

PROHIBITED SPECIES	Discarded BYCATCH	Rate/ Retain GF	Discard Pounds
Halibut (mt)	104 mt	9 kg/mt	228,000
Halibut Mortality (mt)	66 mt	5 kg/mt	146,000
Herring (mt)	0 mt	0 kg/mt	0
C. bairdi Tanner crab	297 crab	0.024 indiv/mt	
Other Tanner crab	0 crab	0.000 indiv/mt	
Red king crab	1,730 crab	0.143 indiv/mt	
Other king crab	2,509 crab	0.207 indiv/mt	
Chinook salmon	0 salmon	0.000 indiv/mt	
Other salmon	0 salmon	0.000 indiv/mt	
Halibut and Herring Discard Pounds	146,000		
Crab and Salmon Discard Numbers	4,535		

Appendix 1. Discards in the Bering Sea/Aleutian Islands, 2003: TABLES

TABLE 13.

2003 GROUND FISH SPECIES	AREA:	BSAI				
	GEAR: TYPE: TARGET:	Trawl Catcher/processor Flathead sole				
	Harvest mt	Retained mt	Discarded mt	Discard Rate	Rate/ Retain GF	Discard Pounds
Atka Mackerel	0	0	0	-	0.000	0
Pollock	2,989	1,437	1,551	51.9%	0.120	3,420,000
Pacific Cod	1,776	1,776	0	0.0%	0.000	0
Yellowfin sole	2,400	2,044	357	14.9%	0.028	786,000
Rock sole	1,126	700	426	37.8%	0.033	939,000
Flathead sole	6,508	5,625	884	13.6%	0.069	1,948,000
Alaska plaice	630	0	630	100.0%	0.049	1,388,000
Other flatfish	36	15	20	57.3%	0.002	45,000
Greenland turbot	77	64	13	16.9%	0.001	29,000
Arrowtooth flounder	2,073	926	1,147	55.3%	0.089	2,528,000
Pacific ocean perch	19	0	19	100.0%	0.001	42,000
Northern rockfish	0	0	0	-	0.000	0
Shortraker/roughey rockfish	0	0	0	-	0.000	0
Other rockfish	14	14	0	0.0%	0.000	0
Sablefish	2	2	0	0.0%	0.000	0
Other Species	1,003	285	718	71.6%	0.056	1,583,000
TOTAL	18,653	12,888	5,764	30.9%	0.447	12,708,000

PROHIBITED SPECIES	Discarded BYCATCH	Rate/ Retain GF	Discard Pounds
Halibut (mt)	234 mt	18 kg/mt	516,000
Halibut Mortality (mt)	150 mt	12 kg/mt	330,000
Herring (mt)	3 mt	0 kg/mt	6,000
C. bairdi Tanner crab	320,661 crab	24.880 indiv/mt	
Other Tanner crab	231,680 crab	17.976 indiv/mt	
Red king crab	0 crab	0.000 indiv/mt	
Other king crab	0 crab	0.000 indiv/mt	
Chinook salmon	57 salmon	0.004 indiv/mt	
Other salmon	174 salmon	0.014 indiv/mt	
Halibut and Herring Discard Pounds	336,000 pounds		
Crab and Salmon Discard Numbers	552,573 individuals		

Appendix 1. Discards in the Bering Sea/Aleutian Islands, 2003: TABLES

TABLE 14.

2003 GROUND FISH SPECIES	AREA:	BSAI				
	GEAR: TYPE: TARGET:	Trawl Catcher/processor Rock sole				
	Harvest mt	Retained mt	Discarded mt	Discard Rate	Rate/ Retain GF	Discard Pounds
Atka Mackerel	1	0	1	100.0%	0.000	2,000
Pollock	4,645	2,499	2,147	46.2%	0.094	4,732,000
Pacific Cod	3,166	2,919	248	7.8%	0.011	546,000
Yellowfin sole	6,288	4,636	1,652	26.3%	0.073	3,641,000
Rock sole	18,435	11,979	6,456	35.0%	0.284	14,233,000
Flathead sole	741	422	319	43.1%	0.014	704,000
Alaska plaice	345	9	337	97.4%	0.015	742,000
Other flatfish	779	37	742	95.2%	0.033	1,635,000
Greenland turbot	0	0	0	-	0.000	0
Arrowtooth flounder	418	67	352	84.1%	0.015	775,000
Pacific ocean perch	0	0	0	-	0.000	0
Northern rockfish	0	0	0	-	0.000	0
Shortraker/rougeye rockfish	0	0	0	-	0.000	0
Other rockfish	0	0	0	-	0.000	0
Sablefish	2	2	0	0.0%	0.000	0
Other Species	965	190	774	80.3%	0.034	1,707,000
TOTAL	35,786	22,760	13,026	36.4%	0.572	28,718,000

PROHIBITED SPECIES	Discarded BYCATCH	Rate/ Retain GF	Discard Pounds
Halibut (mt)	1,126 mt	49 kg/mt	2,482,000
Halibut Mortality (mt)	889 mt	39 kg/mt	1,961,000
Herring (mt)	3 mt	0 kg/mt	6,000
C. bairdi Tanner crab	239,148 crab	10.507 indiv/mt	
Other Tanner crab	39,327 crab	1.728 indiv/mt	
Red king crab	53,397 crab	2.346 indiv/mt	
Other king crab	412 crab	0.018 indiv/mt	
Chinook salmon	579 salmon	0.025 indiv/mt	
Other salmon	0 salmon	0.000 indiv/mt	
Halibut and Herring Discard Pounds	1,967,000 pounds		
Crab and Salmon Discard Numbers	332,861 individuals		

Appendix 1. Discards in the Bering Sea/Aleutian Islands, 2003: TABLES

TABLE 16.

2003 GROUND FISH SPECIES	AREA:		BSAI			
	GEAR:	TYPE:	Trawl Catcher/processor Yellowfin sole			
TARGET:	Harvest mt	Retained mt	Discarded mt	Discard Rate	Rate/ Retain GF	Discard Pounds
Atka Mackerel	9	0	9	100.0%	0.000	19,000
Pollock	11,390	7,016	4,374	38.4%	0.058	9,644,000
Pacific Cod	4,516	4,258	257	5.7%	0.003	567,000
Yellowfin sole	63,803	56,139	7,664	12.0%	0.102	16,896,000
Rock sole	8,239	4,431	3,808	46.2%	0.051	8,395,000
Flathead sole	2,808	2,002	805	28.7%	0.011	1,775,000
Alaska plaice	8,542	335	8,207	96.1%	0.109	18,094,000
Other flatfish	203	13	190	93.5%	0.003	419,000
Greenland turbot	4	3	1	33.3%	0.000	3,000
Arrowtooth flounder	1,078	271	807	74.9%	0.011	1,780,000
Pacific ocean perch	11	0	11	100.0%	0.000	23,000
Northern rockfish	0	0	0	-	0.000	0
Shortraker/roughey rockfish	0	0	0	-	0.000	0
Other rockfish	0	0	0	-	0.000	0
Sablefish	0	0	0	-	0.000	0
Other Species	3,021	603	2,418	80.0%	0.032	5,331,000
TOTAL	103,624	75,071	28,553	27.6%	0.380	62,947,000

PROHIBITED SPECIES	Discarded BYCATCH	Rate/ Retain GF	Discard Pounds
Halibut (mt)	869 mt	12 kg/mt	1,916,000
Halibut Mortality (mt)	704 mt	9 kg/mt	1,552,000
Herring (mt)	33 mt	0 kg/mt	73,000
C. bairdi Tanner crab	229,221 crab	3.053 indiv/mt	
Other Tanner crab	342,051 crab	4.556 indiv/mt	
Red king crab	26,615 crab	0.355 indiv/mt	
Other king crab	250 crab	0.003 indiv/mt	
Chinook salmon	271 salmon	0.004 indiv/mt	
Other salmon	520 salmon	0.007 indiv/mt	
Halibut and Herring Discard Pounds	1,625,000 pounds		
Crab and Salmon Discard Numbers	598,930 individuals		

Appendix 1. Discards in the Bering Sea/Aleutian Islands, 2003: TABLES

TABLE 17.

2003 GROUND FISH SPECIES	AREA:		BSAI			
	GEAR:	TYPE:	Trawl Catcher/processor Arrowtooth Flounder			
TARGET:	Harvest mt	Retained mt	Discarded mt	Discard Rate	Rate/ Retain GF	Discard Pounds
Atka Mackerel	36	15	21	57.5%	0.011	45,000
Pollock	264	150	115	43.4%	0.061	253,000
Pacific Cod	162	162	0	0.0%	0.000	0
Yellowfin sole	0	0	0	-	0.000	0
Rock sole	33	10	23	69.3%	0.012	51,000
Flathead sole	194	137	57	29.4%	0.030	126,000
Alaska plaice	0	0	0	-	0.000	0
Other flatfish	216	207	9	4.1%	0.005	20,000
Greenland turbot	183	129	54	29.5%	0.029	119,000
Arrowtooth flounder	1,260	853	407	32.3%	0.217	897,000
Pacific ocean perch	12	2	9	80.2%	0.005	20,000
Northern rockfish	0	0	0	-	0.000	0
Shortraker/rougheye rockfish	0	0	0	-	0.000	0
Other rockfish	107	106	1	1.3%	0.001	3,000
Sablefish	47	40	7	15.8%	0.004	16,000
Other Species	151	65	86	56.7%	0.046	189,000
TOTAL	2,666	1,877	789	29.6%	0.420	1,740,000

PROHIBITED SPECIES	Discarded BYCATCH	Rate/ Retain GF	Discard Pounds
Halibut (mt)	61 mt	33 kg/mt	135,000
Halibut Mortality (mt)	46 mt	25 kg/mt	102,000
Herring (mt)	0 mt	0 kg/mt	0
C. bairdi Tanner crab	5,141 crab	2.738 indiv/mt	
Other Tanner crab	548 crab	0.292 indiv/mt	
Red king crab	0 crab	0.000 indiv/mt	
Other king crab	478 crab	0.254 indiv/mt	
Chinook salmon	1,648 salmon	0.878 indiv/mt	
Other salmon	9 salmon	0.005 indiv/mt	
Halibut and Herring Discard Pounds	102,000 pounds		
Crab and Salmon Discard Numbers	7,824 individuals		

Appendix 1. Discards in the Bering Sea/Aleutian Islands, 2003: TABLES

TABLE 18.

2003 GROUND FISH SPECIES	AREA: GEAR: TYPE: TARGET:		BSAI Trawl Shoreside All			
	Harvest mt	Retained mt	Discarded mt	Discard Rate	Rate/ Retain GF	Discard Pounds
Atka Mackerel	1,781	423	1,358	76.2%	0.002	2,993,000
Pollock	655,512	652,845	2,667	0.4%	0.004	5,881,000
Pacific Cod	40,747	40,440	307	0.8%	0.000	677,000
Yellowfin sole	136	16	120	88.4%	0.000	265,000
Rock sole	2,133	374	1,759	82.5%	0.003	3,877,000
Flathead sole	948	538	410	43.2%	0.001	903,000
Alaska plaice	10	2	8	82.9%	0.000	18,000
Other flatfish	320	86	235	73.3%	0.000	517,000
Greenland turbot	8	5	2	29.1%	0.000	5,000
Arrowtooth flounder	1,309	199	1,110	84.8%	0.002	2,447,000
Pacific ocean perch	287	146	140	49.0%	0.000	310,000
Northern rockfish	53	6	46	87.8%	0.000	102,000
Shortraker/rougheye rockfish	2	1	0	12.1%	0.000	0
Other rockfish	22	4	17	80.0%	0.000	38,000
Sablefish	49	8	41	83.1%	0.000	90,000
Other Species	2,115	448	1,667	78.8%	0.002	3,675,000
TOTAL	705,431	695,543	9,888	1.4%	0.014	21,800,000

PROHIBITED SPECIES	Discarded BYCATCH	Rate/ Retain GF	Discard Pounds
Halibut (mt)	1,124 mt	2 kg/mt	2,477,000
Halibut Mortality (mt)	750 mt	1 kg/mt	1,653,000
Herring (mt)	703 mt	1 kg/mt	1,550,000
C. bairdi Tanner crab	57,130 crab	0.082 indiv/mt	
Other Tanner crab	9,169 crab	0.013 indiv/mt	
Red king crab	239 crab	0.000 indiv/mt	
Other king crab	33 crab	0.000 indiv/mt	
Chinook salmon	25,039 salmon	0.036 indiv/mt	
Other salmon	153,328 salmon	0.220 indiv/mt	
Halibut and Herring Discard Pounds	3,203,000 pounds		
Crab and Salmon Discard Numbers	244,937 individuals		

Appendix 1. Discards in the Bering Sea/Aleutian Islands, 2003: TABLES

TABLE 21.

2003 GROUND FISH SPECIES	AREA: GEAR: TYPE: TARGET:		BSAI Trawl Shoreside Pacific cod			
	Harvest mt	Retained mt	Discarded mt	Discard Rate	Rate/ Retain GF	Discard Pounds
Atka Mackerel	1,110	2	1,109	99.8%	0.029	2,444,000
Pollock	3,270	859	2,411	73.7%	0.063	5,316,000
Pacific Cod	37,786	37,496	291	0.8%	0.008	641,000
Yellowfin sole	119	1	119	99.2%	0.003	261,000
Rock sole	1,700	15	1,685	99.1%	0.044	3,715,000
Flathead sole	359	16	342	95.5%	0.009	755,000
Alaska plaice	8	0	8	100.0%	0.000	18,000
Other flatfish	225	6	219	97.2%	0.006	482,000
Greenland turbot	2	0	2	100.0%	0.000	4,000
Arrowtooth flounder	1,059	2	1,057	99.8%	0.027	2,331,000
Pacific ocean perch	6	0	6	100.0%	0.000	13,000
Northern rockfish	31	0	31	100.0%	0.001	69,000
Shortraker/rougheye rockfish	0	0	0	-	0.000	0
Other rockfish	15	0	15	100.0%	0.000	33,000
Sablefish	9	1	8	93.2%	0.000	18,000
Other Species	1,285	99	1,186	92.3%	0.031	2,616,000
TOTAL	46,986	38,496	8,490	18.1%	0.221	18,717,000

PROHIBITED SPECIES	Discarded BYCATCH	Rate/ Retain GF	Discard Pounds
Halibut (mt)	1,085 mt	28 kg/mt	2,392,000
Halibut Mortality (mt)	716 mt	19 kg/mt	1,579,000
Herring (mt)	1 mt	0 kg/mt	3,000
C. bairdi Tanner crab	56,774 crab	1.475 indiv/mt	
Other Tanner crab	8,846 crab	0.230 indiv/mt	
Red king crab	185 crab	0.005 indiv/mt	
Other king crab	23 crab	0.001 indiv/mt	
Chinook salmon	1,071 salmon	0.028 indiv/mt	
Other salmon	749 salmon	0.019 indiv/mt	
Halibut and Herring Discard Pounds	1,582,000 pounds		
Crab and Salmon Discard Numbers	67,648 individuals		

Appendix 1. Discards in the Bering Sea/Aleutian Islands, 2003: TABLES

TABLE 22.

2003 GROUND FISH SPECIES	AREA:		BSAI			
	GEAR:	TYPE:	TARGET:	Discard	Rate/ Retain GF	Discard Pounds
	Harvest mt	Retained mt	Discarded mt	Rate		
Atka Mackerel	0	0	0	100.0%	0.000	0
Pollock	129,129	129,129	0	0.0%	0.000	0
Pacific Cod	509	509	0	0.0%	0.000	0
Yellowfin sole	34	8	26	76.6%	0.000	57,000
Rock sole	134	82	52	38.6%	0.000	114,000
Flathead sole	177	81	96	54.2%	0.001	211,000
Alaska plaice	0	0	0	-	0.000	0
Other flatfish	5	2	3	59.2%	0.000	7,000
Greenland turbot	2	1	0	12.1%	0.000	0
Arrowtooth flounder	23	8	15	66.3%	0.000	34,000
Pacific ocean perch	82	0	82	99.9%	0.001	182,000
Northern rockfish	3	0	3	100.0%	0.000	8,000
Shortraker/rougheyeye rockfish	0	0	0	-	0.000	0
Other rockfish	0	0	0	-	0.000	0
Sablefish	0	0	0	-	0.000	0
Other Species	57	0	57	100.0%	0.000	125,000
TOTAL	130,156	129,821	335	0.3%	0.003	738,000

PROHIBITED SPECIES	Discarded BYCATCH	Rate/ Retain GF	Discard Pounds
Halibut (mt)	4 mt	0 kg/mt	9,000
Halibut Mortality (mt)	4 mt	0 kg/mt	8,000
Herring (mt)	229 mt	2 kg/mt	505,000
C. bairdi Tanner crab	0 crab	0.000 indiv/mt	
Other Tanner crab	0 crab	0.000 indiv/mt	
Red king crab	0 crab	0.000 indiv/mt	
Other king crab	0 crab	0.000 indiv/mt	
Chinook salmon	4,325 salmon	0.033 indiv/mt	
Other salmon	11,894 salmon	0.092 indiv/mt	
Halibut and Herring Discard Pounds	513,000 pounds		
Crab and Salmon Discard Numbers	16,219 individuals		

Appendix 1. Discards in the Bering Sea/Aleutian Islands, 2003: TABLES

TABLE 23.

2003	AREA:		BSAI			
	GEAR:		Trawl			
	TYPE:		Mothership			
	TARGET:		Midwater pollock			
GROUND FISH SPECIES	Harvest mt	Retained mt	Discarded mt	Discard Rate	Rate/ Retain GF	Discard Pounds
Atka Mackerel	0	0	0	100.0%	0.000	0
Pollock	129,129	129,129	0	0.0%	0.000	0
Pacific Cod	509	509	0	0.0%	0.000	0
Yellowfin sole	34	8	26	76.6%	0.000	57,000
Rock sole	134	82	52	38.6%	0.000	114,000
Flathead sole	177	81	96	54.2%	0.001	211,000
Alaska plaice	0	0	0	-	0.000	0
Other flatfish	5	2	3	59.2%	0.000	7,000
Greenland turbot	2	1	0	12.1%	0.000	0
Arrowtooth flounder	23	8	15	66.3%	0.000	34,000
Pacific ocean perch	82	0	82	99.9%	0.001	182,000
Northern rockfish	3	0	3	100.0%	0.000	8,000
Shorthead/rougeye rockfish	0	0	0	-	0.000	0
Other rockfish	0	0	0	100.0%	0.000	0
Sablefish	0	0	0	-	0.000	0
Other Species	57	0	57	100.0%	0.000	125,000
TOTAL	130,156	129,821	335	0.3%	0.003	738,000

PROHIBITED SPECIES	Discarded BYCATCH	Rate/ Retain GF	Discard Pounds
Halibut (mt)	4 mt	0 kg/mt	9,000
Halibut Mortality (mt)	4 mt	0 kg/mt	8,000
Herring (mt)	229 mt	2 kg/mt	505,000
C. bairdi Tanner crab	0 crab	0.000 indiv/mt	
Other Tanner crab	0 crab	0.000 indiv/mt	
Red king crab	0 crab	0.000 indiv/mt	
Other king crab	0 crab	0.000 indiv/mt	
Chinook salmon	4,325 salmon	0.033 indiv/mt	
Other salmon	11,894 salmon	0.092 indiv/mt	
Halibut and Herring Discard Pounds	513,000 pounds		
Crab and Salmon Discard Numbers	16,219 individuals		

Appendix 1. Discards in the Bering Sea/Aleutian Islands, 2003: TABLES

TABLE 25.

2003 GROUND FISH SPECIES	AREA:		BSAI				Discard Pounds	
	GEAR:	TYPE:	Harvest mt	Retained mt	Discarded mt	Discard Rate		Rate/ Retain GF
	TARGET:		Hook and line Catcher/processor Greenland turbot					
Atka Mackerel			0	0	0	-	0.000	0
Pollock			5	3	1	23.2%	0.001	2,000
Pacific Cod			17	15	2	13.2%	0.001	5,000
Yellowfin sole			0	0	0	-	0.000	0
Rock sole			0	0	0	-	0.000	0
Flathead sole			5	0	5	100.0%	0.003	10,000
Alaska plaice			0	0	0	-	0.000	0
Other flatfish			5	0	5	100.0%	0.003	10,000
Greenland turbot			1,524	1,483	41	2.7%	0.024	91,000
Arrowtooth flounder			160	86	74	46.3%	0.042	163,000
Pacific ocean perch			0	0	0	-	0.000	0
Northern rockfish			0	0	0	-	0.000	0
Shortraker/rougheyeye rockfish			34	24	10	30.0%	0.006	23,000
Other rockfish			50	42	8	16.0%	0.005	18,000
Sablefish			135	91	43	32.2%	0.025	95,000
Other Species			219	7	213	97.0%	0.122	469,000
TOTAL			2,153	1,751	402	18.7%	0.230	887,000

PROHIBITED SPECIES	Discarded BYCATCH	Rate/ Retain GF	Discard Pounds
Halibut (mt)	99 mt	57 kg/mt	219,000
Halibut Mortality (mt)	20 mt	11 kg/mt	44,000
Herring (mt)	0 mt	0 kg/mt	0
C. bairdi Tanner crab	68 crab	0.039 indiv/mt	
Other Tanner crab	33 crab	0.019 indiv/mt	
Red king crab	0 crab	0.000 indiv/mt	
Other king crab	146 crab	0.084 indiv/mt	
Chinook salmon	10 salmon	0.006 indiv/mt	
Other salmon	19 salmon	0.011 indiv/mt	
Halibut and Herring Discard Pounds	44,000 pounds		
Crab and Salmon Discard Numbers	276 individuals		

Appendix 1. Discards in the Bering Sea/Aleutian Islands, 2003: TABLES

TABLE 26

2003 GROUND FISH SPECIES	AREA: GEAR: TYPE: TARGET:		BSAI Hook and line Catcher/processor Pacific cod			
	Harvest mt	Retained mt	Discarded mt	Discard Rate	Rate/ Retain GF	Discard Pounds
Atka Mackerel	20	6	14	69.1%	0.000	30,000
Pollock	7,118	6,332	786	11.0%	0.008	1,734,000
Pacific Cod	93,689	91,890	1,798	1.9%	0.017	3,965,000
Yellowfin sole	573	14	560	97.6%	0.005	1,234,000
Rock sole	36	1	36	97.9%	0.000	78,000
Flathead sole	368	32	336	91.3%	0.003	740,000
Alaska plaice	0	0	0	100.0%	0.000	0
Other flatfish	80	6	75	93.0%	0.001	164,000
Greenland turbot	178	126	52	29.3%	0.001	115,000
Arrowtooth flounder	1,139	304	835	73.3%	0.008	1,840,000
Pacific ocean perch	1	0	1	91.2%	0.000	2,000
Northern rockfish	23	1	23	96.8%	0.000	50,000
Shortraker/roughey rockfish	30	7	22	75.1%	0.000	49,000
Other rockfish	21	5	17	78.6%	0.000	37,000
Sablefish	78	13	64	83.1%	0.001	142,000
Other Species	14,818	5,391	9,426	63.6%	0.091	20,781,000
TOTAL	118,171	104,127	14,044	11.9%	0.135	30,962,000

PROHIBITED SPECIES	Discarded BYCATCH	Rate/ Retain GF	Discard Pounds
Halibut (mt)	4,428 mt	43 kg/mt	9,763,000
Halibut Mortality (mt)	487 mt	5 kg/mt	1,074,000
Herring (mt)	0 mt	0 kg/mt	0
C. bairdi Tanner crab	11,518 crab	0.111 indiv/mt	
Other Tanner crab	63,415 crab	0.609 indiv/mt	
Red king crab	13,416 crab	0.129 indiv/mt	
Other king crab	1,824 crab	0.018 indiv/mt	
Chinook salmon	0 salmon	0.000 indiv/mt	
Other salmon	13 salmon	0.000 indiv/mt	
Halibut and Herring Discard Pounds	1,074,000 pounds		
Crab and Salmon Discard Numbers	90,186 individuals		

Appendix 1. Discards in the Bering Sea/Aleutian Islands, 2003: TABLES

TABLE 27

2003 GROUND FISH SPECIES	AREA: GEAR: TYPE: TARGET:		BSAI Hook and line Catcher/processor Sablefish			
	Harvest mt	Retained mt	Discarded mt	Discard Rate	Rate/ Retain GF	Discard Pounds
Atka Mackerel	0	0	0	-	0.000	0
Pollock	0	0	0	-	0.000	0
Pacific Cod	0	0	0	-	0.000	0
Yellowfin sole	0	0	0	-	0.000	0
Rock sole	0	0	0	-	0.000	0
Flathead sole	0	0	0	-	0.000	0
Alaska plaice	0	0	0	-	0.000	0
Other flatfish	0	0	0	-	0.000	0
Greenland turbot	107	81	26	24.3%	0.055	57,000
Arrowtooth flounder	30	22	7	24.7%	0.016	16,000
Pacific ocean perch	0	0	0	-	0.000	0
Northern rockfish	0	0	0	-	0.000	0
Shortraker/roughey rockfish	23	8	14	63.1%	0.031	31,000
Other rockfish	83	51	32	38.7%	0.069	70,000
Sablefish	308	303	6	1.8%	0.012	12,000
Other Species	75	1	74	98.2%	0.159	163,000
TOTAL	625	466	159	25.4%	0.341	350,000

PROHIBITED SPECIES	Discarded BYCATCH	Rate/ Retain GF	Discard Pounds
Halibut (mt)	n/a	kg/mt	
Halibut Mortality (mt)	n/a	kg/mt	
Herring (mt)	0 mt	0 kg/mt	0
C. bairdi Tanner crab	0 crab	0.000 indiv/mt	
Other Tanner crab	0 crab	0.000 indiv/mt	
Red king crab	0 crab	0.000 indiv/mt	
Other king crab	148 crab	0.319 indiv/mt	
Chinook salmon	0 salmon	0.000 indiv/mt	
Other salmon	0 salmon	0.000 indiv/mt	
Halibut and Herring Discard Pounds	0 pounds		
Crab and Salmon Discard Numbers	148 individuals		

Appendix 1. Discards in the Bering Sea/Aleutian Islands, 2003: TABLES

TABLE 28.

2003 GROUND FISH SPECIES	AREA: GEAR: TYPE: TARGET:		BSAI Hook and line Catcher/processor Other			
	Harvest mt	Retained mt	Discarded mt	Discard Rate	Rate/ Retain GF	Discard Pounds
Atka Mackerel	0	0	0	-	0.000	0
Pollock	3	3	0	0.0%	0.000	0
Pacific Cod	13	12	1	4.9%	0.020	1,000
Yellowfin sole	0	0	0	-	0.000	0
Rock sole	0	0	0	-	0.000	0
Flathead sole	0	0	0	-	0.004	0
Alaska plaice	0	0	0	-	0.000	0
Other flatfish	0	0	0	-	0.000	0
Greenland turbot	0	0	0	-	0.000	0
Arrowtooth flounder	2	0	2	100.0%	0.046	3,000
Pacific ocean perch	0	0	0	-	0.000	0
Northern rockfish	0	0	0	-	0.000	0
Shorthead/rougheye rockfish	0	0	0	-	0.000	0
Other rockfish	0	0	0	-	0.000	0
Sablefish	0	0	0	-	0.000	0
Other Species	21	17	3	15.9%	0.100	7,000
TOTAL	38	33	6	14.5%	0.169	12,000

PROHIBITED SPECIES	Discarded BYCATCH	Rate/ Retain GF	Discard Pounds
Halibut (mt)	11 mt	337 kg/mt	24,000
Halibut Mortality (mt)	1 mt	37 kg/mt	3,000
Herring (mt)	0 mt	0 kg/mt	0
C. bairdi Tanner crab	0 crab	0.000 indiv/mt	
Other Tanner crab	0 crab	0.000 indiv/mt	
Red king crab	0 crab	0.000 indiv/mt	
Other king crab	0 crab	0.000 indiv/mt	
Chinook salmon	0 salmon	0.000 indiv/mt	
Other salmon	0 salmon	0.000 indiv/mt	
Halibut and Herring Discard Pounds	3,000 pounds		
Crab and Salmon Discard Numbers	0 individuals		

Appendix 1. Discards in the Bering Sea/Aleutian Islands, 2003: TABLES

TABLE 29.

2003 GROUND FISH SPECIES	AREA:		BSAI			
	GEAR:	TYPE:	Hook and line Shoreside			
	TARGET:		All			
	Harvest mt	Retained mt	Discarded mt	Discard Rate	Rate/ Retain GF	Discard Pounds
Atka Mackerel	0	0	0	-	0.000	0
Pollock	0	0	0	-	0.000	0
Pacific Cod	486	482	4	0.8%	0.004	8,000
Yellowfin sole	0	0	0	-	0.000	0
Rock sole	0	0	0	-	0.000	0
Flathead sole	0	0	0	-	0.000	0
Alaska plaice	0	0	0	-	0.000	0
Other flatfish	0	0	0	100.0%	0.000	0
Greenland turbot	432	18	414	95.9%	0.430	913,000
Arrowtooth flounder	33	0	33	100.0%	0.034	72,000
Pacific ocean perch	0	0	0	-	0.000	0
Northern rockfish	0	0	0	-	0.000	0
Shortraker/rougheyeye rockfish	2	2	0	13.5%	0.000	1,000
Other rockfish	40	39	1	1.6%	0.001	1,000
Sablefish	427	424	4	0.9%	0.004	9,000
Other Species	27	0	27	100.0%	0.028	60,000
TOTAL	1,446	964	482	33.4%	0.501	1,063,000

PROHIBITED SPECIES	Discarded BYCATCH	Rate/ Retain GF	Discard Pounds
Halibut (mt)	27 mt	28 kg/mt	60,000
Halibut Mortality (mt)	3 mt	3 kg/mt	7,000
Herring (mt)	0 mt	0 kg/mt	0
C. bairdi Tanner crab	32 crab	0.034 indiv/mt	
Other Tanner crab	217 crab	0.225 indiv/mt	
Red king crab	38 crab	0.040 indiv/mt	
Other king crab	255 crab	0.265 indiv/mt	
Chinook salmon	0 salmon	0.000 indiv/mt	
Other salmon	12 salmon	0.013 indiv/mt	
Halibut and Herring Discard Pounds	7,000 pounds		
Crab and Salmon Discard Numbers	555 individuals		

Appendix 1. Discards in the Bering Sea/Aleutian Islands, 2003: TABLES

TABLE 30.

2003	AREA:	BSAI				
	GEAR:	Hook and line				
	TYPE:	Shoreside				
	TARGET:	Pacific cod				
GROUND FISH SPECIES	Harvest mt	Retained mt	Discarded mt	Discard Rate	Rate/ Retain GF	Discard Pounds
Atka Mackerel	0	0	0	-	0.000	0
Pollock	0	0	0	-	0.000	0
Pacific Cod	477	477	0	0.0%	0.000	0
Yellowfin sole	0	0	0	-	0.000	0
Rock sole	0	0	0	-	0.000	0
Flathead sole	0	0	0	-	0.000	0
Alaska plaice	0	0	0	-	0.000	0
Other flatfish	0	0	0	-	0.000	0
Greenland turbot	0	0	0	-	0.000	0
Arrowtooth flounder	0	0	0	-	0.000	0
Pacific ocean perch	0	0	0	-	0.000	0
Northern rockfish	0	0	0	-	0.000	0
Shortraker/rougheye rockfish	0	0	0	-	0.000	0
Other rockfish	1	1	0	0.0%	0.000	0
Sablefish	2	2	0	0.0%	0.000	0
Other Species	0	0	0	-	0.000	0
TOTAL	479	479	0	0.0%	0.000	0

PROHIBITED SPECIES	Discarded BYCATCH	Rate/ Retain GF	Discard Pounds
Halibut (mt)	27 mt	56 kg/mt	60,000
Halibut Mortality (mt)	3 mt	6 kg/mt	7,000
Herring (mt)	mt	0 kg/mt	0
C. bairdi Tanner crab	32 crab	0.068 indiv/mt	
Other Tanner crab	217 crab	0.452 indiv/mt	
Red king crab	38 crab	0.080 indiv/mt	
Other king crab	6 crab	0.012 indiv/mt	
Chinook salmon	0 salmon	0.000 indiv/mt	
Other salmon	0 salmon	0.000 indiv/mt	
Halibut and Herring Discard Pounds	7,000 pounds		
Crab and Salmon Discard Numbers	293 individuals		

Appendix 1. Discards in the Bering Sea/Aleutian Islands, 2003: TABLES

TABLE 31

2003 GROUND FISH SPECIES	AREA:		BSAI			
	GEAR:	TYPE:	Hook and line Shoreside Sablefish			
TARGET:	Harvest mt	Retained mt	Discarded mt	Discard Rate	Rate/ Retain GF	Discard Pounds
Atka Mackerel	0	0	0	-	0.000	0
Pollock	0	0	0	-	0.000	0
Pacific Cod	9	5	4	41.2%	0.008	8,000
Yellowfin sole	0	0	0	-	0.000	0
Rock sole	0	0	0	-	0.000	0
Flathead sole	0	0	0	-	0.000	0
Alaska plaice	0	0	0	-	0.000	0
Other flatfish	0	0	0	-	0.000	0
Greenland turbot	432	18	414	95.9%	0.854	913,000
Arrowtooth flounder	33	0	33	100.0%	0.067	72,000
Pacific ocean perch	0	0	0	-	0.000	0
Northern rockfish	0	0	0	-	0.000	0
Shortraker/roughey rockfish	2	2	0	13.5%	0.000	1,000
Other rockfish	39	38	1	1.6%	0.001	1,000
Sablefish	426	422	4	0.9%	0.008	9,000
Other Species	27	0	27	100.0%	0.056	60,000
						0
TOTAL	967	485	482	49.9%	0.995	1,063,000

PROHIBITED SPECIES	Discarded BYCATCH	Rate/ Retain GF	Discard Pounds
Halibut (mt)	n/a	kg/mt	
Halibut Mortality (mt)	n/a	kg/mt	
Herring (mt)	0 mt	0 kg/mt	0
C. bairdi Tanner crab	0 crab	0.000 indiv/mt	
Other Tanner crab	0 crab	0.000 indiv/mt	
Red king crab	0 crab	0.000 indiv/mt	
Other king crab	249 crab	0.514 indiv/mt	
Chinook salmon	0 salmon	0.000 indiv/mt	
Other salmon	12 salmon	0.026 indiv/mt	
Halibut and Herring Discard Pounds	0 pounds		
Crab and Salmon Discard Numbers	262 individuals		

Appendix 1. Discards in the Bering Sea/Aleutian Islands, 2003: TABLES

TABLE 32.

2003 GROUND FISH SPECIES	AREA:		BSAI			
	GEAR:	TYPE:	Jig Shoreside Pacific cod			
TARGET:	Harvest mt	Retained mt	Discarded mt	Discard Rate	Rate/ Retain GF	Discard Pounds
Atka Mackerel	0	0	0	-	0.000	0
Pollock	0	0	0	-	0.000	0
Pacific Cod	156	156	0	0.0%	0.000	0
Yellowfin sole	0	0	0	-	0.000	0
Rock sole	0	0	0	-	0.000	0
Flathead sole	0	0	0	-	0.000	0
Alaska plaice	0	0	0	-	0.000	0
Other flatfish	0	0	0	-	0.000	0
Greenland turbot	0	0	0	-	0.000	0
Arrowtooth flounder	0	0	0	-	0.000	0
Pacific ocean perch	0	0	0	-	0.000	0
Northern rockfish	0	0	0	-	0.000	0
Shortraker/rougheye rockfish	0	0	0	-	0.000	0
Other rockfish	0	0	0	-	0.000	0
Sablefish	0	0	0	-	0.000	0
Other Species	0	0	0	-	0.000	0
TOTAL	156	156	0	0.0%	0.000	0

PROHIBITED SPECIES	Discarded BYCATCH	Rate/ Retain GF	Discard Pounds
Halibut (mt)	0 mt	0 kg/mt	0
Halibut Mortality (mt)	0 mt	0 kg/mt	0
Herring (mt)	0 mt	0 kg/mt	0
C. bairdi Tanner crab	0 crab	0.000 indiv/mt	
Other Tanner crab	0 crab	0.000 indiv/mt	
Red king crab	0 crab	0.000 indiv/mt	
Other king crab	0 crab	0.000 indiv/mt	
Chinook salmon	0 salmon	0.000 indiv/mt	
Other salmon	0 salmon	0.000 indiv/mt	
Halibut and Herring Discard Pounds	0 pounds		
Crab and Salmon Discard Numbers	0 individuals		

Appendix 1. Discards in the Bering Sea/Aleutian Islands, 2003: TABLES

TABLE 33.

2003 GROUND FISH SPECIES	AREA:		BSAI		Discard Rate	Rate/ Retain GF	Discard Pounds
	GEAR: TYPE: TARGET:		Pot All All				
	Harvest mt	Retained mt	Discarded mt				
Atka Mackerel	211	3	208		98.8%	0.009	459,000
Pollock	21	10	10		49.5%	0.000	23,000
Pacific Cod	21,959	21,783	176		0.8%	0.008	387,000
Yellowfin sole	70	0	70		100.0%	0.003	154,000
Rock sole	7	0	7		100.0%	0.000	15,000
Flathead sole	0	0	0		-	0.000	0
Alaska plaice	0	0	0		-	0.000	0
Other flatfish	2	0	2		100.0%	0.000	3,000
Greenland turbot	65	0	65		100.0%	0.003	144,000
Arrowtooth flounder	112	0	112		100.0%	0.005	247,000
Pacific ocean perch	1	0	1		100.0%	0.000	3,000
Northern rockfish	1	0	1		100.0%	0.000	3,000
Shortraker/rougheye rockfish	2	0	2		100.0%	0.000	4,000
Other rockfish	8	0	8		99.8%	0.000	17,000
Sablefish	505	499	6		1.2%	0.000	13,000
Other Species	383	47	336		87.7%	0.015	741,000
TOTAL	23,346	22,343	1,004		4.3%	0.045	2,212,000

PROHIBITED SPECIES	Discarded BYCATCH	Rate/ Retain GF	Discard Pounds
Halibut (mt)	44 mt	2 kg/mt	97,000
Halibut Mortality (mt)	5 mt	0 kg/mt	12,000
Herring (mt)	0 mt	0 kg/mt	0
C. bairdi Tanner crab	87,723 crab	3.926 indiv/mt	
Other Tanner crab	26,164 crab	1.171 indiv/mt	
Red king crab	90 crab	0.004 indiv/mt	
Other king crab	142,846 crab	6.393 indiv/mt	
Chinook salmon	0 salmon	0.000 indiv/mt	
Other salmon	0 salmon	0.000 indiv/mt	
Halibut and Herring Discard Pounds	12,000 pounds		
Crab and Salmon Discard Numbers	256,823 individuals		

Appendix 1. Discards in the Bering Sea/Aleutian Islands, 2003: TABLES

TABLE 34.

2003 GROUND FISH SPECIES	AREA:		BSAI			
	GEAR:	Pot				
	TYPE:		Shoreside			
	TARGET:		Pacific cod			
	Harvest mt	Retained mt	Discarded mt	Discard Rate	Rate/ Retain GF	Discard Pounds
Atka Mackerel	206	3	203	98.7%	0.010	448,000
Pollock	13	3	10	77.4%	0.000	21,000
Pacific Cod	20,406	20,236	170	0.8%	0.008	374,000
Yellowfin sole	70	0	70	100.0%	0.003	154,000
Rock sole	3	0	3	100.0%	0.000	6,000
Flathead sole	0	0	0	-	0.000	0
Alaska plaice	0	0	0	-	0.000	0
Other flatfish	1	0	1	100.0%	0.000	3,000
Greenland turbot	0	0	0	100.0%	0.000	0
Arrowtooth flounder	5	0	5	100.0%	0.000	10,000
Pacific ocean perch	1	0	1	100.0%	0.000	2,000
Northern rockfish	1	0	1	100.0%	0.000	3,000
Shortraker/rougheye rockfish	0	0	0	100.0%	0.000	0
Other rockfish	5	0	5	99.7%	0.000	11,000
Sablefish	0	0	0	100.0%	0.000	0
Other Species	374	47	327	87.4%	0.016	721,000
TOTAL	21,084	20,289	796	3.8%	0.039	1,754,000

PROHIBITED SPECIES	Discarded BYCATCH	Rate/ Retain GF	Discard Pounds
Halibut (mt)	23 mt	1 kg/mt	50,000
Halibut Mortality (mt)	2 mt	0 kg/mt	5,000
Herring (mt)	0 mt	0 kg/mt	0
C. bairdi Tanner crab	80,817 crab	3.983 indiv/mt	
Other Tanner crab	21,898 crab	1.079 indiv/mt	
Red king crab	50 crab	0.002 indiv/mt	
Other king crab	369 crab	0.018 indiv/mt	
Chinook salmon	0 salmon	0.000 indiv/mt	
Other salmon	0 salmon	0.000 indiv/mt	
Halibut and Herring Discard Pounds	5,000 pounds		
Crab and Salmon Discard Numbers	103,134 individuals		

Appendix 1. Discards in the Bering Sea/Aleutian Islands, 2003: TABLES

TABLE 35.

2003 GROUND FISH SPECIES	AREA: GEAR: TYPE: TARGET:		BSAI Pot Shoreside Sablefish			
	Harvest mt	Retained mt	Discarded mt	Discard Rate	Rate/ Retain GF	Discard Pounds
Atka Mackerel	0	0	0	-	0.000	0
Pollock	1	0	0	79.5%	0.001	0
Pacific Cod	3	0	3	100.0%	0.007	0
Yellowfin sole	0	0	0	-	0.000	0
Rock sole	4	0	4	100.0%	0.008	0
Flathead sole	0	0	0	-	0.000	0
Alaska plaice	0	0	0	-	0.000	0
Other flatfish	0	0	0	-	0.000	0
Greenland turbot	65	0	65	100.0%	0.130	21,000
Arrowtooth flounder	107	0	107	100.0%	0.215	18,000
Pacific ocean perch	1	0	1	100.0%	0.001	0
Northern rockfish	0	0	0	-	0.000	0
Shortraker/rougeye rockfish	2	0	2	100.0%	0.003	0
Other rockfish	3	0	3	100.0%	0.005	0
Sablefish	505	499	6	1.1%	0.011	1,000
Other Species	7	0	7	100.0%	0.014	0
TOTAL	698	500	198	28.4%	0.397	41,000

PROHIBITED SPECIES	Discarded BYCATCH	Rate/ Retain GF	Discard Pounds
Halibut (mt)	20 mt	40 kg/mt	65,000
Halibut Mortality (mt)	3 mt	6 kg/mt	6,000
Herring (mt)	0 mt	0 kg/mt	0
C. bairdi Tanner crab	175 crab	0.350 indiv/mt	
Other Tanner crab	47 crab	0.093 indiv/mt	
Red king crab	32 crab	0.063 indiv/mt	
Other king crab	142,388 crab	285.021 indiv/mt	
Chinook salmon	0 salmon	0.000 indiv/mt	
Other salmon	0 salmon	0.000 indiv/mt	
Halibut and Herring Discard Pounds	6,000 pounds		
Crab and Salmon Discard Numbers	142,641 individuals		

Appendix 1. Discards in the Bering Sea/Aleutian Islands, 2003: TABLES

TABLE 36.

2003 GROUND FISH SPECIES	AREA: GEAR: TYPE: TARGET:		BSAI Pot Catcher/processor Pacific cod			
	Harvest mt	Retained mt	Discarded mt	Discard Rate	Rate/ Retain GF	Discard Pounds
Atka Mackerel	5	0	5	100.0%	0.003	10,000
Pollock	8	8	0	1.6%	0.000	0
Pacific Cod	1,549	1,547	3	0.2%	0.002	6,000
Yellowfin sole	0	0	0	-	0.000	0
Rock sole	0	0	0	-	0.000	0
Flathead sole	0	0	0	-	0.000	0
Alaska plaice	0	0	0	-	0.000	0
Other flatfish	0	0	0	-	0.000	0
Greenland turbot	0	0	0	-	0.000	0
Arrowtooth flounder	0	0	0	-	0.000	0
Pacific ocean perch	0	0	0	-	0.000	0
Northern rockfish	0	0	0	-	0.000	0
Shortraker/rougheye rockfish	0	0	0	-	0.000	0
Other rockfish	0	0	0	-	0.000	0
Sablefish	0	0	0	-	0.000	0
Other Species	2	0	2	100.0%	0.001	4,000
						0
TOTAL	1,564	1,554	10	0.6%	0.006	21,000

PROHIBITED SPECIES	Discarded BYCATCH	Rate/ Retain GF	Discard Pounds
Halibut (mt)	1 mt	1 kg/mt	3,000
Halibut Mortality (mt)	0 mt	0 kg/mt	0
Herring (mt)	0 mt	0 kg/mt	0
C. bairdi Tanner crab	6,732 crab	4.331 indiv/mt	
Other Tanner crab	4,219 crab	2.715 indiv/mt	
Red king crab	8 crab	0.005 indiv/mt	
Other king crab	89 crab	0.057 indiv/mt	
Chinook salmon	0 salmon	0.000 indiv/mt	
Other salmon	0 salmon	0.000 indiv/mt	
Halibut and Herring Discard Pounds	0 pounds		
Crab and Salmon Discard Numbers	11,047 individuals		

APPENDIX 2.

GULF OF ALASKA

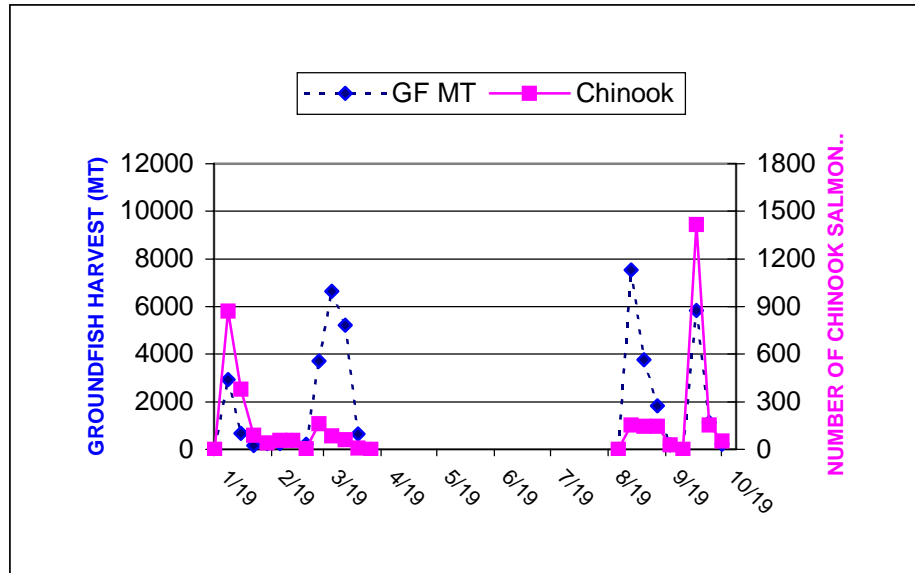
FIGURES 8-14

Appendix 2. Discards in the Gulf of Alaska, 2003: FIGURES 8 - 14

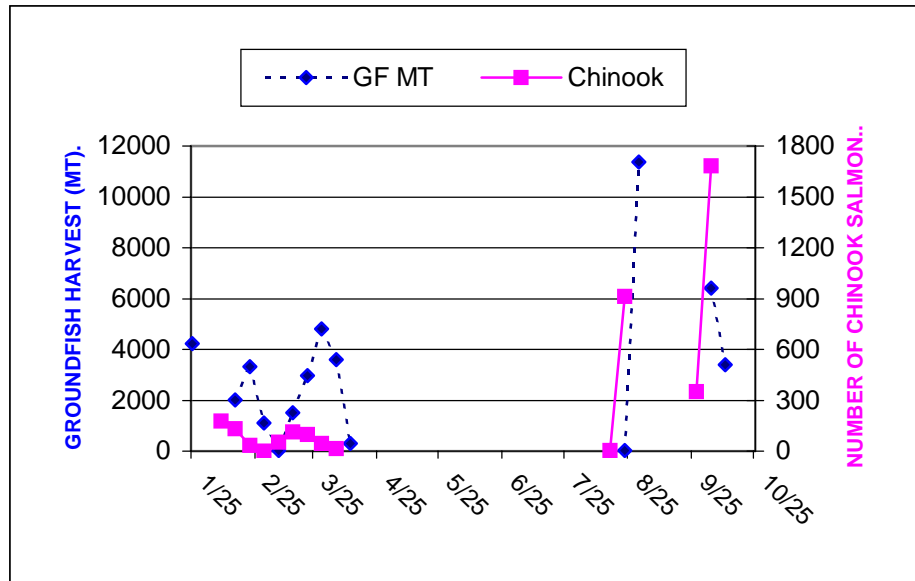
Appendix 2. Discards in the Gulf of Alaska, 2003: FIGURES 8 - 14

FIGURE 8. WEEKLY GROUNDFISH HARVEST AND CHINOOK SALMON BYCATCH BY VESSELS TARGETTING POLLOCK WITH PELAGIC TRAWLS

2002



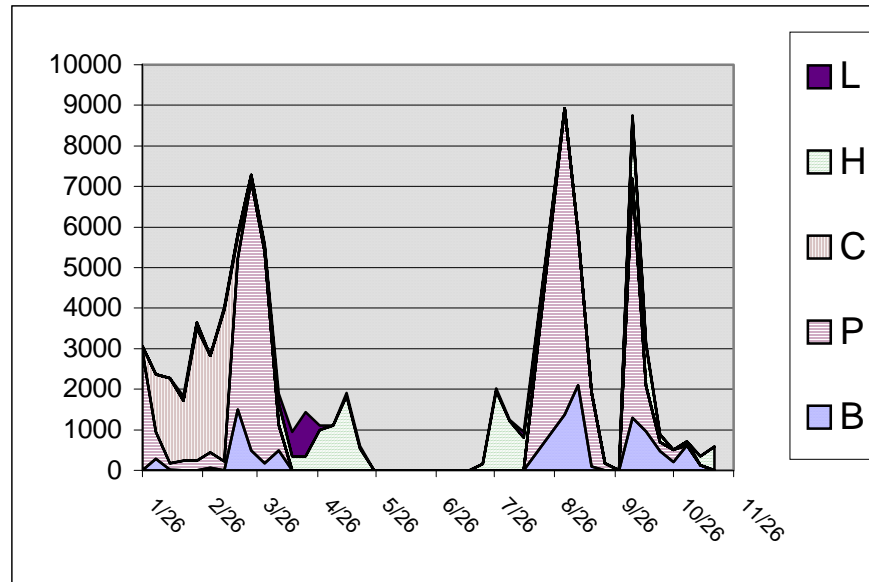
2003



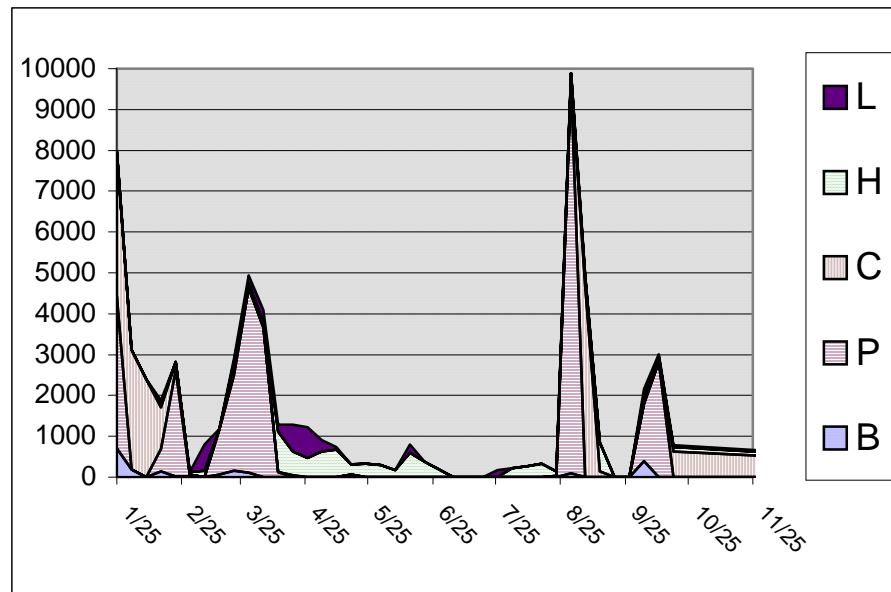
GROUNDFISH HARVESTED IN METRIC TONS (GF MT) INCLUDES TARGET AND NON-TARGET GROUNDFISH SPECIES

FIGURE 9. WEEKLY GROUND FISH HARVEST (MT) BY VESSELS TARGETTING SHALLOW-WATER COMPLEX SPECIES WITH TRAWLS

2002



2003

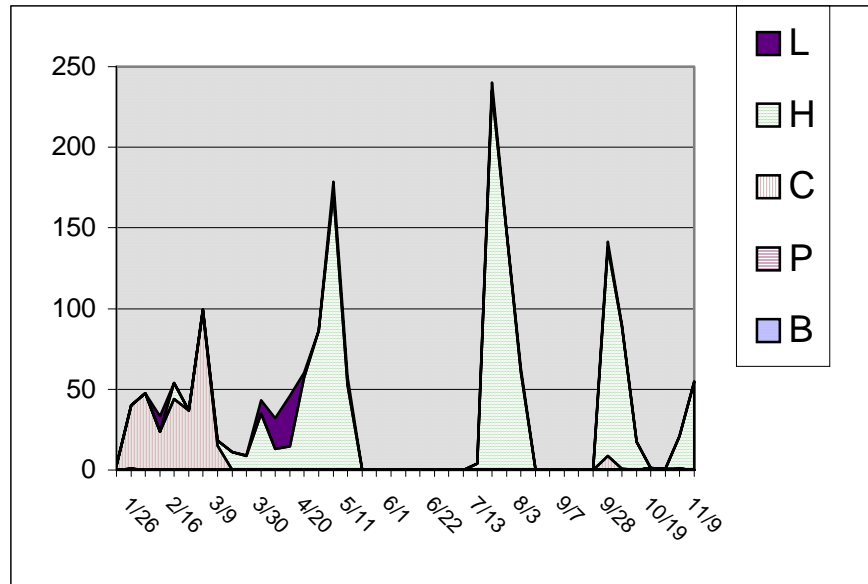


GROUND FISH HARVESTED (GF MT) INCLUDES TARGET AND NON-TARGET GROUND FISH SPECIES

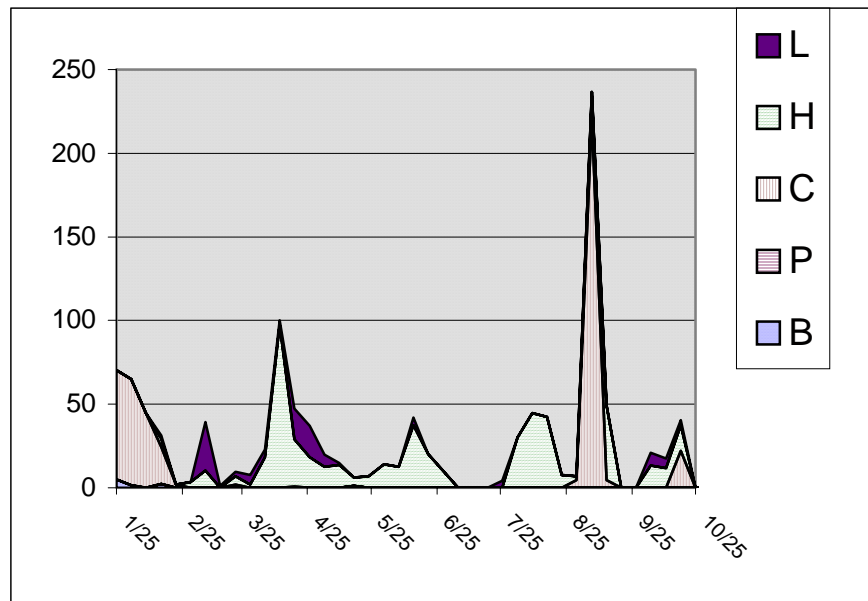
L=FLATHEAD SOLE C=PACIFIC COD P=PELAGIC POLLOCK
B=BOTTOM POLLOCK H=SHALLOW-WATER FLATFISH

FIGURE 10. WEEKLY HALIBUT MORTALITY (MT) BY VESSELS TARGETTING SHALLOW-WATER COMPLEX SPECIES WITH TRAWLS

2002



2003



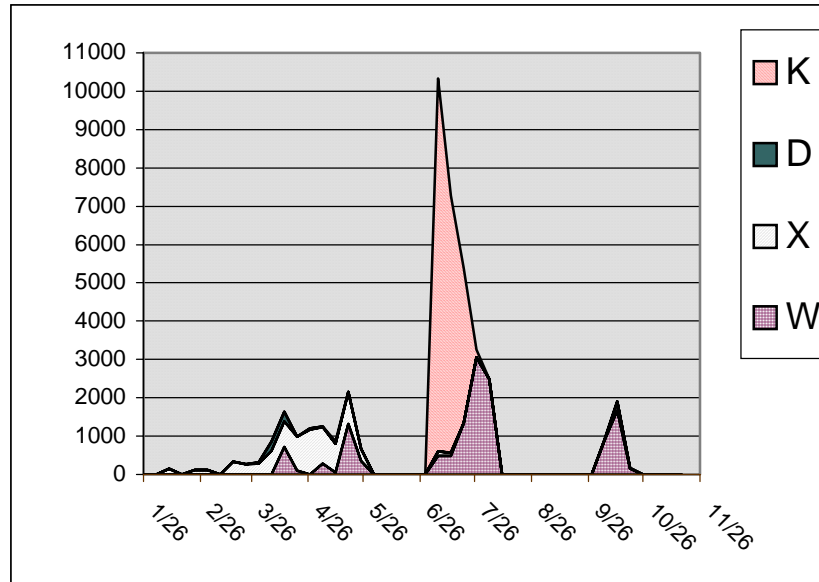
GROUND FISH HARVESTED (GF MT) INCLUDES TARGET AND NON-TARGET GROUND FISH SPECIES

L=FLATHEAD SOLE C=PACIFIC COD P=PELAGIC POLLOCK B=BOTTOM POLLOCK H=SHALLOW-WATER FLATFISH

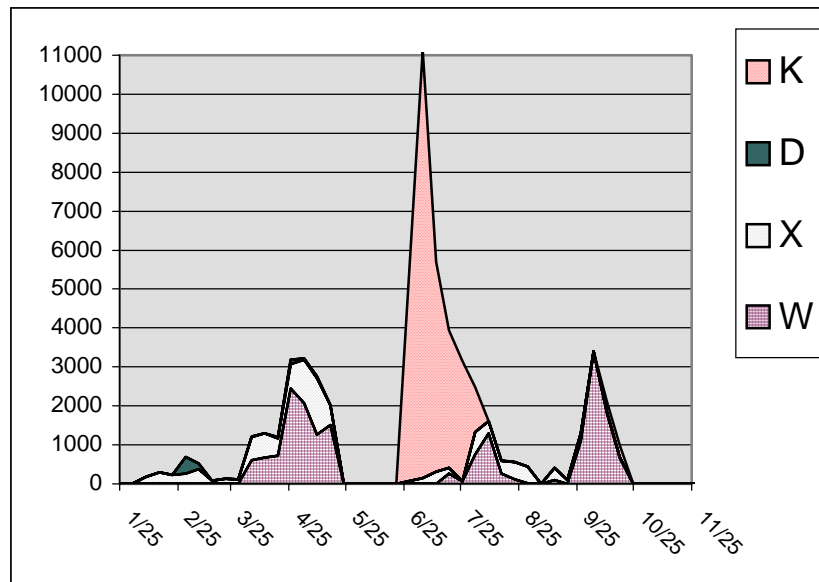
Appendix 2. Discards in the Gulf of Alaska, 2003: FIGURES 8 - 14

FIGURE 11. WEEKLY GROUNDFISH HARVEST (MT) BY VESSELS TARGETTING DEEP-WATER COMPLEX SPECIES WITH TRAWLS

2002



2003

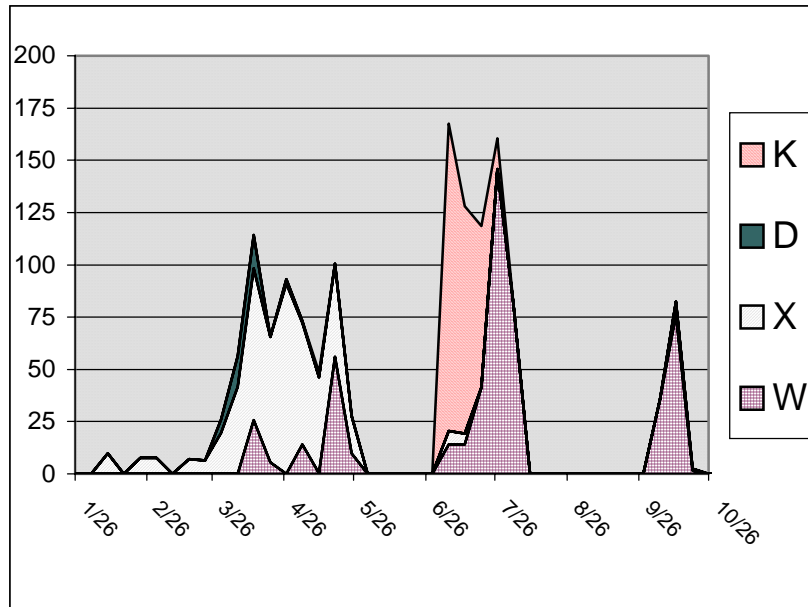


GROUNDFISH HARVESTED (GF MT) INCLUDES TARGET AND NON TARGET GROUND FISH SPECIES
 K=ROCKFISH D=DEEP-WATER FLATFISH X=REX SOLE
 W=ARROWTOOTH FLOUNDER

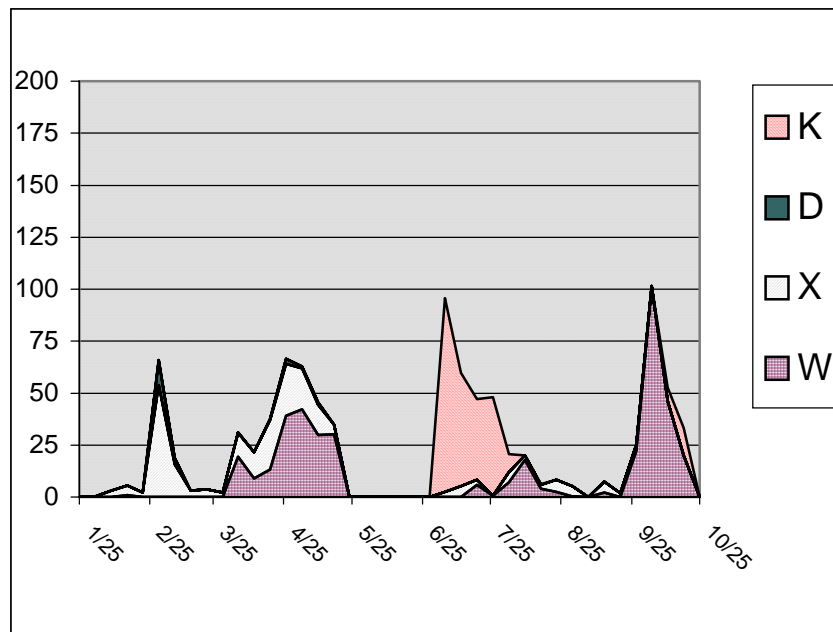
Appendix 2. Discards in the Gulf of Alaska, 2003: FIGURES 8 - 14

FIGURE 12. WEEKLY HALIBUT MORTALITY (MT) BY VESSELS TARGETTING DEEP-WATER COMPLEX SPECIES WITH TRAWLS

2002



2003

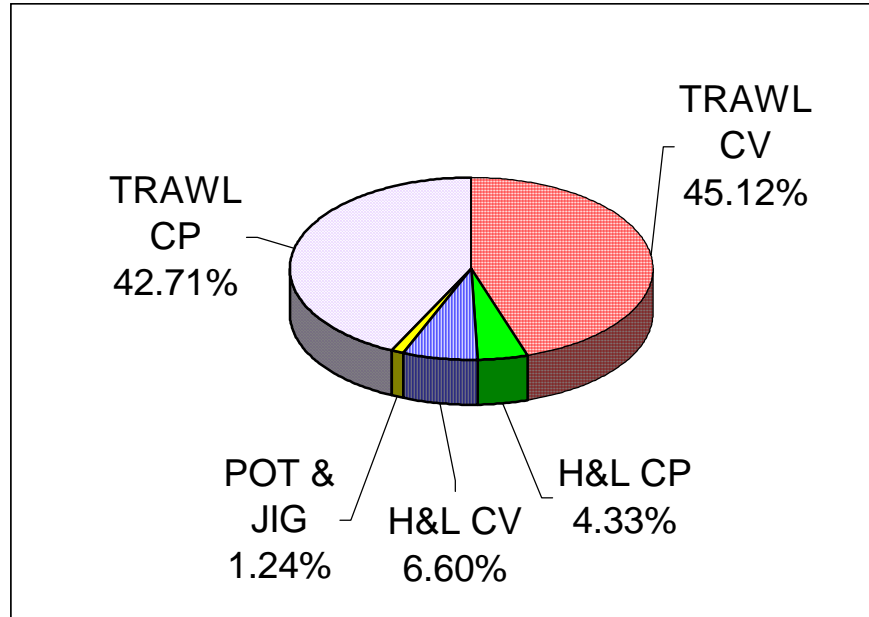


GROUND FISH HARVESTED (GF MT) INCLUDES TARGET AND NON-TARGET GROUND FISH SPECIES

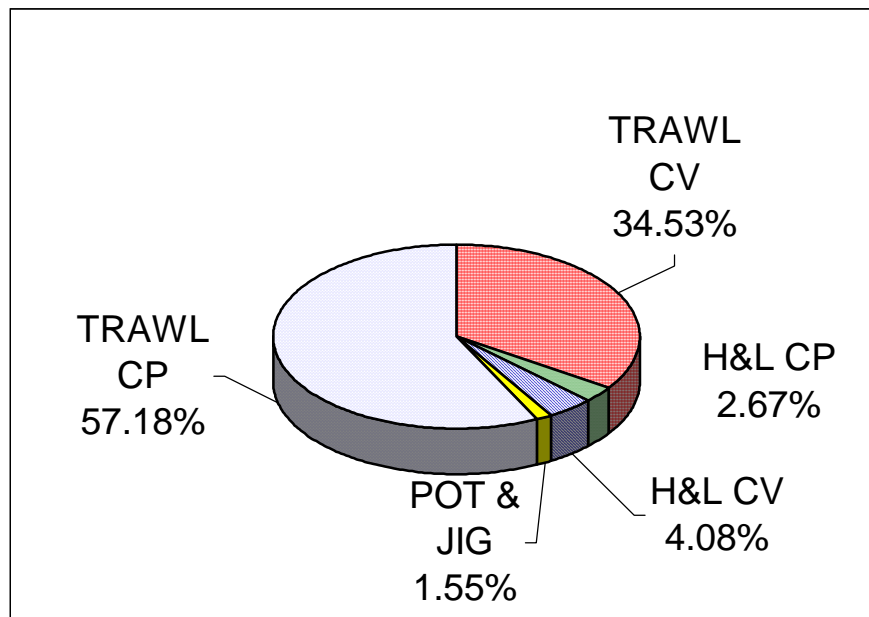
K=ROCKFISH D=DEEP-WATER FLATFISH X=REX SOLE
W=ARROWTOOTH FLOUNDER

FIGURE 13.

2002 GROUND FISH DISCARDS BY SECTOR: PERCENT OF TOTAL



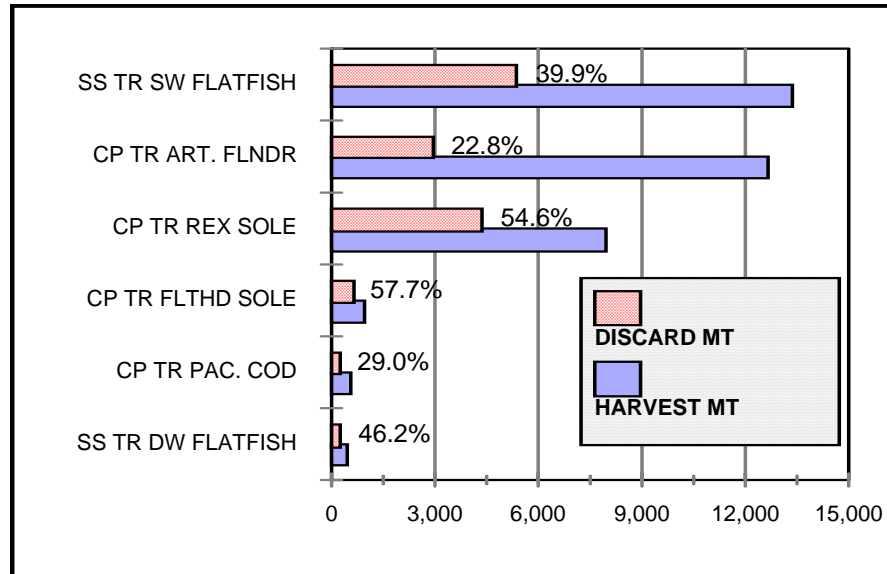
2003 GROUND FISH DISCARDS BY SECTOR: PERCENT OF TOTAL



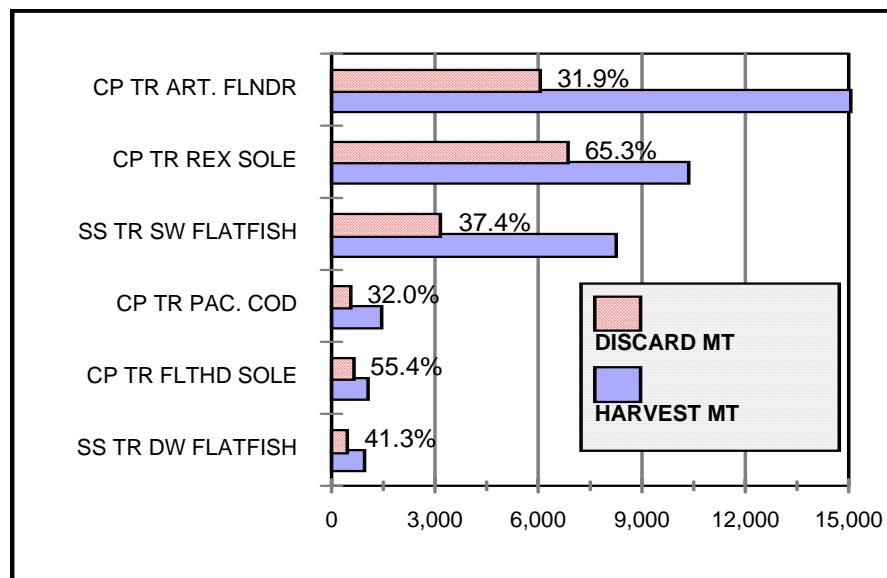
CP=CATCHER/PROCESSER. CV=CATCHER VESSEL (SHORESIDE)
H&L=HOOK AND LINE

Appendix 2. Discards in the Gulf of Alaska, 2003: FIGURES 8 - 14

FIGURE 14. 2002 FISHERIES WITH HIGHEST DISCARD RATES



2003 FISHERIES WITH HIGHEST DISCARD RATES



TONNAGES SHOWN ARE ALL GROUND FISH SPECIES, , NOT JUST TARGET

FLHD SL=FLATHEAD SOLE

DW FLATS= DEEPWATER FLATFISH COMPLEX

Appendix 2. Discards in the Gulf of Alaska, 2003: FIGURES 8 - 14

APPENDIX 2.

GULF OF ALASKA
CATCH AND DISCARD TABLES
2003

Appendix 2. Discards in the Gulf of Alaska, 2003: TABLES

TABLE 37.

2003 GROUND FISH SPECIES	AREA:		GOA			
	Harvest mt	Retained mt	Discarded mt	Discard Rate	Rate/ Retain GF	Discard Pounds
Atka Mackerel	537	304	233	43.3%	0.001	513,000
Pollock	50,359	49,337	1,022	2.0%	0.006	2,253,000
Pacific Cod	51,705	49,584	2,121	4.1%	0.013	4,676,000
Deep-water flatfish	896	452	444	49.5%	0.003	978,000
Rex sole	3,405	3,234	172	5.0%	0.001	379,000
Arrowtooth Flounder	29,376	12,727	16,649	56.7%	0.105	36,704,000
Shallow-water flatfish	4,551	4,142	409	9.0%	0.003	901,000
Flathead sole	2,293	2,032	260	11.4%	0.002	574,000
Pacific ocean perch	10,180	8,551	1,628	16.0%	0.010	3,590,000
Pelagic shelf rockfish	3,042	2,971	71	2.3%	0.000	156,000
Slope rockfish	939	328	611	65.0%	0.004	1,346,000
Shortraker/rougeye rockfish	1,392	1,004	388	27.9%	0.002	855,000
Northern rockfish	5,328	4,837	490	9.2%	0.003	1,081,000
Demersal shelf rockfish	246	246	0	0.2%	0.000	1,000
Thornyhead rockfish	1,157	1,025	132	11.4%	0.001	291,000
Sablefish	14,887	13,791	1,096	7.4%	0.007	2,416,000
Other groundfish	5,739	3,389	2,350	41.0%	0.015	5,181,000
TOTAL	186,031	157,955	28,076	15.1%	0.178	61,896,000

PROHIBITED SPECIES	Discarded BYCATCH	Rate/ Retain GF	Discard Pounds
Halibut (mt)	5,144 mt	32.568 kg/mt	10,390,000
Halibut Mortality (mt)	2,348 mt	14.865 kg/mt	4,721,000
Herring (mt)	13 mt	0.084 kg/mt	12,000
C. bairdi Tanner crab	146,173 crab	0.925 indiv/mt	
Other Tanner crab	1,440 crab	0.009 indiv/mt	
Red king crab	88 crab	0.001 indiv/mt	
Other king crab	846 crab	0.005 indiv/mt	
Chinook salmon	15,509 salmon	0.098 indiv/mt	
Other salmon	9,890 salmon	0.063 indiv/mt	
Halibut and Herring Discard Pounds	4,733,000 pounds		
Crab and Salmon Discard Numbers	173,947 individuals		

Appendix 2. Discards in the Gulf of Alaska, 2003: TABLES

TABLE 38.

2003 GROUND FISH SPECIES	AREA:		GOA		Discard Rate	Rate/ Retain GF	Discard Pounds
	GEAR: TYPE: TARGET:		Trawl	Catcher/processor All			
	Harvest mt	Retained mt	Discarded mt				
Atka Mackerel	508	292	216	42.6%	0.008	477,000	
Pollock	722	593	129	17.9%	0.005	285,000	
Pacific Cod	2,027	1,503	524	25.9%	0.020	1,155,000	
Deep-water flatfish	468	71	397	84.8%	0.015	876,000	
Rex sole	3,257	3,124	133	4.1%	0.005	294,000	
Arrowtooth Flounder	21,554	10,773	10,782	50.0%	0.410	23,769,000	
Shallow-water flatfish	105	98	8	7.4%	0.000	17,000	
Flathead sole	990	817	173	17.5%	0.007	382,000	
Pacific ocean perch	4,777	3,367	1,410	29.5%	0.054	3,108,000	
Pelagic shelf rockfish	1,553	1,505	48	3.1%	0.002	105,000	
Slope rockfish	772	180	593	76.7%	0.023	1,306,000	
Shortraker/rougheye rockfish	636	524	111	17.5%	0.004	245,000	
Northern rockfish	2,350	1,902	448	19.1%	0.017	987,000	
Demersal shelf rockfish	0	0	0	-	0.000	0	
Thornyhead rockfish	635	588	47	7.4%	0.002	104,000	
Sablefish	1,107	558	550	49.6%	0.021	1,212,000	
Other groundfish	910	426	484	53.2%	0.018	1,067,000	
						0	
TOTAL	42,372	26,320	16,052	37.9%	0.610	35,389,000	

PROHIBITED SPECIES	Discarded BYCATCH	Rate/ Retain GF	Discard Pounds
Halibut	1,446 mt	55 kg/mt	3,189,000
Halibut Mortality	814 mt	31 kg/mt	1,795,000
Herring	0 mt	0 kg/mt	0
C. bairdi Tanner crab	56,857 crab	2.160 indiv/mt	
Other Tanner crab	25 crab	0.001 indiv/mt	
Red king crab	59 crab	0.002 indiv/mt	
Other king crab	110 crab	0.004 indiv/mt	
Chinook salmon	6,382 salmon	0.242 indiv/mt	
Other salmon	1,433 salmon	0.054 indiv/mt	
Halibut and Herring Discard Pounds	1,795,000 pounds		
Crab and Salmon Discard Numbers	64,865 individuals		

Appendix 2. Discards in the Gulf of Alaska, 2003: TABLES

TABLE 39.

2003 GROUND FISH SPECIES	AREA: GEAR: TYPE: TARGET:			GOA Trawl Catcher/processor Arrowtooth flounder		
	Harvest mt	Retained mt	Discarded mt	Discard Rate	Rate/ Retain GF	Discard Pounds
Atka Mackerel	42	39	3	7.4%	0.000	7,000
Pollock	323	263	60	18.7%	0.005	133,000
Pacific Cod	761	451	310	40.7%	0.024	683,000
Deep-water flatfish	195	68	127	65.1%	0.010	280,000
Rex sole	977	918	59	6.0%	0.005	130,000
Arrowtooth Flounder	14,291	10,255	4,036	28.2%	0.319	8,899,000
Shallow-water flatfish	42	37	5	12.7%	0.000	12,000
Flathead sole	333	244	89	26.8%	0.007	197,000
Pacific ocean perch	727	90	637	87.6%	0.050	1,405,000
Pelagic shelf rockfish	35	17	19	52.7%	0.001	41,000
Slope rockfish	70	0	70	100.0%	0.006	155,000
Shortraker/rougheye rockfish	23	17	6	26.6%	0.000	14,000
Northern rockfish	100	42	58	58.2%	0.005	129,000
Demersal shelf rockfish	0	0	0	-	0.000	0
Thornyhead rockfish	74	68	7	9.1%	0.001	15,000
Sablefish	328	73	255	77.8%	0.020	562,000
Other groundfish	275	86	188	68.5%	0.015	415,000
TOTAL	18,597	12,666	5,931	31.9%	0.468	13,075,000

PROHIBITED SPECIES	Discarded BYCATCH		Rate/ Retain GF	Discard Pounds
Halibut	712	mt	56 kg/mt	1,571,000
Halibut Mortality	395	mt	31 kg/mt	872,000
Herring	0	mt	0 kg/mt	0
C. bairdi Tanner crab	27,503	crab	2.171 indiv/mt	
Other Tanner crab	0	crab	0.000 indiv/mt	
Red king crab	0	crab	0.000 indiv/mt	
Other king crab	110	crab	0.009 indiv/mt	
Chinook salmon	3,316	salmon	0.262 indiv/mt	
Other salmon	878	salmon	0.069 indiv/mt	
Halibut and Herring Discard Pounds	872,000	pounds		
Crab and Salmon Discard Numbers	31,807	individuals		

Appendix 2. Discards in the Gulf of Alaska, 2003: TABLES

TABLE 40.

2003 GROUND FISH SPECIES	AREA: GEAR: TYPE: TARGET:		GOA Trawl Catcher/processor Flathead sole			
	Harvest mt	Retained mt	Discarded mt	Discard Rate	Rate/ Retain GF	Discard Pounds
Atka Mackerel	0	0	0	-	0.000	0
Pollock	14	14	0	0.0%	0.000	0
Pacific Cod	78	57	21	26.8%	0.051	46,000
Deep-water flatfish	0	0	0	-	0.000	0
Rex sole	74	74	0	0.0%	0.000	0
Arrowtooth Flounder	404	0	404	100.0%	0.987	891,000
Shallow-water flatfish	11	11	0	0.0%	0.000	0
Flathead sole	242	205	37	15.3%	0.090	81,000
Pacific ocean perch	24	0	24	100.0%	0.059	53,000
Pelagic shelf rockfish	0	0	0	-	0.000	0
Slope rockfish	0	0	0	-	0.000	0
Shortraker/rougheye rockfish	0	0	0	-	0.000	0
Northern rockfish	0	0	0	-	0.000	0
Demersal shelf rockfish	0	0	0	-	0.000	0
Thornyhead rockfish	20	20	0	0.0%	0.000	0
Sablefish	26	13	12	48.5%	0.031	28,000
Other groundfish	25	15	10	39.5%	0.024	22,000
TOTAL	918	410	509	55.4%	1.242	1,121,000

PROHIBITED SPECIES	Discarded BYCATCH		Rate/ Retain GF	Discard Pounds
Halibut (mt)	60	mt	145 kg/mt	0
Halibut Mortality (mt)	34	mt	83 kg/mt	75,000
Herring (mt)	0	mt	0 kg/mt	0
C. bairdi Tanner crab	464	crab	1.133 indiv/mt	
Other Tanner crab	0	crab	0.000 indiv/mt	
Red king crab	0	crab	0.000 indiv/mt	
Other king crab	0	crab	0.000 indiv/mt	
Chinook salmon	0	salmon	0.000 indiv/mt	
Other salmon	0	salmon	0.000 indiv/mt	
Halibut and Herring Discard Pounds	75,000	pounds		
Crab and Salmon Discard Numbers	464	individuals		

Appendix 2. Discards in the Gulf of Alaska, 2003: TABLES

TABLE 41.

2003 GROUND FISH SPECIES	AREA: GEAR: TYPE: TARGET:		GOA Trawl Catcher/processor Rex sole			
	Harvest mt	Retained mt	Discarded mt	Discard Rate	Rate/ Retain GF	Discard Pounds
Atka Mackerel	27	19	8	29.4%	0.002	17,000
Pollock	116	94	23	19.4%	0.006	50,000
Pacific Cod	563	436	127	22.6%	0.036	280,000
Deep-water flatfish	213	0	213	100.0%	0.060	470,000
Rex sole	2,068	2,018	50	2.4%	0.014	109,000
Arrowtooth Flounder	5,814	194	5,621	96.7%	1.572	12,391,000
Shallow-water flatfish	28	28	0	0.0%	0.000	0
Flathead sole	359	316	43	12.1%	0.012	96,000
Pacific ocean perch	293	1	292	99.8%	0.082	644,000
Pelagic shelf rockfish	5	0	5	100.0%	0.001	10,000
Slope rockfish	13	0	13	100.0%	0.004	29,000
Shortraker/rougheye rockfish	29	20	10	32.7%	0.003	21,000
Northern rockfish	29	0	29	100.0%	0.008	64,000
Demersal shelf rockfish	0	0	0	-	0.000	0
Thornyhead rockfish	127	111	16	12.3%	0.004	34,000
Sablefish	98	49	49	50.2%	0.014	108,000
Other groundfish	532	293	239	45.0%	0.067	528,000
TOTAL	10,313	3,577	6,737	65.3%	1.884	14,852,000

PROHIBITED SPECIES	Discarded BYCATCH		Rate/ Retain GF	Discard Pounds
Halibut (mt)	447	mt	125 kg/mt	986,000
Halibut Mortality (mt)	237	mt	66 kg/mt	522,000
Herring (mt)	0	mt	0 kg/mt	0
C. bairdi Tanner crab	28,583	crab	7.992 indiv/mt	
Other Tanner crab	0	crab	0.000 indiv/mt	
Red king crab	0	crab	0.000 indiv/mt	
Other king crab	0	crab	0.000 indiv/mt	
Chinook salmon	2,896	salmon	0.810 indiv/mt	
Other salmon	521	salmon	0.146 indiv/mt	
Halibut and Herring Discard Pounds	522,000	pounds		
Crab and Salmon Discard Numbers	32,000	individuals		

Appendix 2. Discards in the Gulf of Alaska, 2003: TABLES

TABLE 42.

2003 GROUND FISH SPECIES	AREA:		GOA			
	GEAR:	TYPE:	Discarded	Discard	Rate/ Retain GF	Discard
	Harvest mt	Retained mt	mt	Rate		Pounds
Atka Mackerel	36	36	0	0.0%	0.000	0
Pollock	44	44	0	0.0%	0.000	0
Pacific Cod	509	509	0	0.0%	0.000	0
Deep-water flatfish	0	0	0	-	0.000	0
Rex sole	53	53	0	0.0%	0.000	0
Arrowtooth Flounder	575	185	391	67.9%	0.430	861,000
Shallow-water flatfish	16	16	0	0.0%	0.000	0
Flathead sole	41	39	1	3.3%	0.001	3,000
Pacific ocean perch	12	0	12	100.0%	0.014	27,000
Pelagic shelf rockfish	4	1	3	-	0.003	7,000
Slope rockfish	0	0	0	-	0.000	0
Shortraker/rougheye rockfish	0	0	0	-	0.000	0
Northern rockfish	0	0	0	-	0.000	0
Demersal shelf rockfish	0	0	0	-	0.000	0
Thornyhead rockfish	0	0	0	-	0.000	0
Sablefish	11	0	11	100.0%	0.012	23,000
Other groundfish	34	24	9	27.4%	0.010	20,000
TOTAL	1,336	908	427	32.0%	0.470	942,000

PROHIBITED SPECIES	Discarded BYCATCH	Rate/ Retain GF	Discard Pounds
Halibut (mt)	67 mt	74 kg/mt	147,000
Halibut Mortality (mt)	42 mt	46 kg/mt	93,000
Herring (mt)	0 mt	0 kg/mt	0
C. bairdi Tanner crab	297 crab	0.327 indiv/mt	
Other Tanner crab	25 crab	0.028 indiv/mt	
Red king crab	0 crab	0.000 indiv/mt	
Other king crab	0 crab	0.000 indiv/mt	
Chinook salmon	170 salmon	0.187 indiv/mt	
Other salmon	0 salmon	0.000 indiv/mt	
Halibut and Herring Discard Pounds	93,000 pounds		
Crab and Salmon Discard Numbers	492 individuals		

Appendix 2. Discards in the Gulf of Alaska, 2003: TABLES

TABLE 43.

2003 GROUND FISH SPECIES	AREA: GEAR: TYPE: TARGET:		GOA Trawl Catcher/processor Rockfish			
	Harvest mt	Retained mt	Discarded mt	Discard Rate	Rate/ Retain GF	Discard Pounds
Atka Mackerel	403	198	205	50.9%	0.023	452,000
Pollock	225	178	46	20.6%	0.005	102,000
Pacific Cod	116	50	66	57.1%	0.008	145,000
Deep-water flatfish	60	3	57	95.0%	0.007	126,000
Rex sole	85	60	25	29.3%	0.003	55,000
Arrowtooth Flounder	469	140	329	70.2%	0.038	726,000
Shallow-water flatfish	9	6	2	28.8%	0.000	5,000
Flathead sole	15	13	2	14.6%	0.000	5,000
Pacific ocean perch	3,721	3,277	444	11.9%	0.051	980,000
Pelagic shelf rockfish	1,508	1,487	21	1.4%	0.002	47,000
Slope rockfish	689	180	509	73.9%	0.058	1,122,000
Shorotraker/rougheye rockfish	583	488	96	16.4%	0.011	211,000
Northern rockfish	2,221	1,860	360	16.2%	0.041	794,000
Demersal shelf rockfish	0	0	0	-	0.000	0
Thornyhead rockfish	414	389	25	6.0%	0.003	55,000
Sablefish	645	423	222	34.5%	0.025	490,000
Other groundfish	45	7	37	83.6%	0.004	82,000
TOTAL	11,208	8,759	2,449	21.9%	0.280	5,399,000

PROHIBITED SPECIES	Discarded BYCATCH	Rate/ Retain GF	Discard Pounds
Halibut (mt)	160 mt	18 kg/mt	353,000
Halibut Mortality (mt)	106 mt	12 kg/mt	233,000
Herring (mt)	0 mt	0 kg/mt	0
C. bairdi Tanner crab	10 crab	0.001 indiv/mt	
Other Tanner crab	0 crab	0.000 indiv/mt	
Red king crab	59 crab	0.007 indiv/mt	
Other king crab	0 crab	0.000 indiv/mt	
Chinook salmon	0 salmon	0.000 indiv/mt	
Other salmon	33 salmon	0.004 indiv/mt	
Halibut and Herring Discard Pounds	233,000 pounds		
Crab and Salmon Discard Numbers	102 individuals		

Appendix 2. Discards in the Gulf of Alaska, 2003: TABLES

TABLE 44.

2003 GROUND FISH SPECIES	AREA:		GOA			
	GEAR:	TYPE:	Trawl	Shoreside		
	TARGET:		All			
	Harvest	Retained	Discarded	Discard	Rate/ Retain GF	Discard
	mt	mt	mt	Rate		Pounds
Atka Mackerel	20	12	7	37.6%	0.000	16,000
Pollock	49,580	48,697	884	1.8%	0.011	1,948,000
Pacific Cod	16,460	15,100	1,360	8.3%	0.016	2,997,000
Deep-water flatfish	413	380	33	8.0%	0.000	73,000
Rex sole	146	110	36	24.5%	0.000	79,000
Arrowtooth Flounder	7,535	1,919	5,616	74.5%	0.067	12,380,000
Shallow-water flatfish	4,422	4,041	380	8.6%	0.005	839,000
Flathead sole	1,301	1,215	86	6.6%	0.001	189,000
Pacific ocean perch	5,401	5,183	218	4.0%	0.003	482,000
Pelagic shelf rockfish	1,454	1,444	10	0.7%	0.000	22,000
Slope rockfish	54	48	6	11.7%	0.000	14,000
Shortraker/rougeye rockfish	251	161	90	35.9%	0.001	199,000
Northern rockfish	2,975	2,935	40	1.3%	0.000	88,000
Demersal shelf rockfish	0	0	0	-	0.000	0
Thornyhead rockfish	135	88	47	35.2%	0.001	105,000
Sablefish	685	551	134	19.6%	0.002	295,000
Other groundfish	2,123	1,376	747	35.2%	0.009	1,647,000
TOTAL	92,954	83,259	9,695	10.4%	0.116	21,374,000

PROHIBITED SPECIES	Discarded BYCATCH	Rate/ Retain GF	Discard Pounds
Halibut (mt)	1,888 mt	23 kg/mt	4,163,000
Halibut Mortality (mt)	1,229 mt	15 kg/mt	2,709,000
Herring (mt)	13 mt	0 kg/mt	29,000
C. bairdi Tanner crab	79,226 crab	0.952 indiv/mt	
Other Tanner crab	1,378 crab	0.017 indiv/mt	
Red king crab	0 crab	0.000 indiv/mt	
Other king crab	514 crab	0.006 indiv/mt	
Chinook salmon	9,127 salmon	0.110 indiv/mt	
Other salmon	8,276 salmon	0.099 indiv/mt	
Halibut and Herring Discard Pounds	2,738,000 pounds		
Crab and Salmon Discard Numbers	98,521 individuals		

Appendix 2. Discards in the Gulf of Alaska, 2003: TABLES

TABLE 45.

2003 GROUND FISH SPECIES	AREA: GEAR: TYPE: TARGET:		GOA Trawl Shoreside Bottom pollock			
	Harvest mt	Retained mt	Discarded mt	Discard Rate	Rate/ Retain GF	Discard Pounds
Atka Mackerel	0	0	0	-	0.000	0
Pollock	3,145	3,145	0	0.0%	0.000	0
Pacific Cod	109	109	0	0.0%	0.000	0
Deep-water flatfish	0	0	0	-	0.000	0
Rex sole	12	11	2	14.5%	0.000	4,000
Arrowtooth Flounder	379	225	154	40.6%	0.042	339,000
Shallow-water flatfish	20	20	0	1.1%	0.000	1,000
Flathead sole	76	71	5	6.6%	0.001	11,000
Pacific ocean perch	17	17	0	0.0%	0.000	0
Pelagic shelf rockfish	1	0	1	100.0%	0.000	3,000
Slope rockfish	0	0	0	-	0.000	0
Shortraker/rougheye rockfish	7	7	0	0.0%	0.000	0
Northern rockfish	0	0	0	-	0.000	0
Demersal shelf rockfish	0	0	0	-	0.000	0
Thornyhead rockfish	0	0	0	-	0.000	0
Sablefish	1	0	1	68.7%	0.000	2,000
Other groundfish	33	21	12	36.2%	0.003	26,000
TOTAL	3,801	3,626	175	4.6%	0.048	386,000

PROHIBITED SPECIES	Discarded BYCATCH	Rate/ Retain GF	Discard Pounds
Halibut (mt)	16 mt	4 kg/mt	35,000
Halibut Mortality (mt)	10 mt	3 kg/mt	21,000
Herring (mt)	0 mt	0 kg/mt	0
C. bairdi Tanner crab	1 crab	0.000 indiv/mt	
Other Tanner crab	0 crab	0.000 indiv/mt	
Red king crab	0 crab	0.000 indiv/mt	
Other king crab	0 crab	0.000 indiv/mt	
Chinook salmon	912 salmon	0.252 indiv/mt	
Other salmon	46 salmon	0.013 indiv/mt	
Halibut and Herring Discard Pounds	21,000 pounds		
Crab and Salmon Discard Numbers	959 individuals		

Appendix 2. Discards in the Gulf of Alaska, 2003: TABLES

TABLE 46.

2003 GROUND FISH SPECIES	AREA: GEAR: TYPE: TARGET:		GOA Trawl Shoreside Mid-water pollock			
	Harvest mt	Retained mt	Discarded mt	Discard Rate	Rate/ Retain GF	Discard Pounds
Atka Mackerel	0	0	0	-	0.000	0
Pollock	45,999	45,262	737	1.6%	0.016	1,625,000
Pacific Cod	166	154	12	7.2%	0.000	27,000
Deep-water flatfish	0	0	0	-	0.000	0
Rex sole	1	1	0	19.7%	0.000	1,000
Arrowtooth Flounder	286	215	70	24.6%	0.002	155,000
Shallow-water flatfish	3	3	0	0.0%	0.000	0
Flathead sole	63	43	20	31.6%	0.000	44,000
Pacific ocean perch	76	17	59	77.5%	0.001	130,000
Pelagic shelf rockfish	1	0	0	70.4%	0.000	1,000
Slope rockfish	1	1	0	0.0%	0.000	0
Shortraker/rougheye rockfish	112	107	5	4.3%	0.000	11,000
Northern rockfish	0	0	0	-	0.000	0
Demersal shelf rockfish	0	0	0	-	0.000	0
Thornyhead rockfish	0	0	0	-	0.000	1,000
Sablefish	0	0	0	-	0.000	0
Other groundfish	167	41	126	75.2%	0.003	277,000
TOTAL	46,875	45,845	1,030	2.2%	0.022	2,270,000

PROHIBITED SPECIES	Discarded BYCATCH	Rate/ Retain GF	Discard Pounds
Halibut (mt)	0 mt	0 kg/mt	0
Halibut Mortality (mt)	0 mt	0 kg/mt	1,000
Herring (mt)	13 mt	0 kg/mt	29,000
C. bairdi Tanner crab	7 crab	0.000 indiv/mt	
Other Tanner crab	0 crab	0.000 indiv/mt	
Red king crab	0 crab	0.000 indiv/mt	
Other king crab	0 crab	0.000 indiv/mt	
Chinook salmon	3,516 salmon	0.077 indiv/mt	
Other salmon	6,325 salmon	0.138 indiv/mt	
Halibut and Herring Discard Pounds	30,000 pounds		
Crab and Salmon Discard Numbers	9,848 individuals		

Appendix 2. Discards in the Gulf of Alaska, 2003: TABLES

TABLE 47.

2003	AREA:		GOA			
	GEAR:		Trawl			
	TYPE:		Shoreside			
	TARGET:		Pacific cod			
GROUND FISH SPECIES	Harvest mt	Retained mt	Discarded mt	Discard Rate	Rate/ Retain GF	Discard Pounds
Atka Mackerel	0	0	0	100.0%	0.000	1,000
Pollock	182	137	45	24.9%	0.003	100,000
Pacific Cod	12,618	12,455	163	1.3%	0.012	359,000
Deep-water flatfish	0	0	0	-	0.000	0
Rex sole	6	3	3	47.4%	0.000	6,000
Arrowtooth Flounder	529	118	411	77.7%	0.031	906,000
Shallow-water flatfish	613	431	182	29.7%	0.014	402,000
Flathead sole	110	77	33	29.9%	0.002	72,000
Pacific ocean perch	2	1	1	40.4%	0.000	2,000
Pelagic shelf rockfish	3	1	2	65.9%	0.000	4,000
Slope rockfish	3	0	3	100.0%	0.000	6,000
Shortraker/rougheye rockfish	0	0	0	-	0.000	0
Northern rockfish	19	2	17	90.8%	0.001	38,000
Demersal shelf rockfish	0	0	0	-	0.000	0
Thornyhead rockfish	0	0	0	-	0.000	0
Sablefish	18	2	16	90.8%	0.001	36,000
Other groundfish	273	120	154	56.2%	0.012	339,000
TOTAL	14,377	13,346	1,031	7.2%	0.077	2,272,000

PROHIBITED SPECIES	Discarded BYCATCH	Rate/ Retain GF	Discard Pounds
Halibut (mt)	639 mt	48 kg/mt	1,409,000
Halibut Mortality (mt)	403 mt	30 kg/mt	887,000
Herring (mt)	0 mt	0 kg/mt	0
C. bairdi Tanner crab	2,221 crab	0.166 indiv/mt	
Other Tanner crab	849 crab	0.064 indiv/mt	
Red king crab	0 crab	0.000 indiv/mt	
Other king crab	0 crab	0.000 indiv/mt	
Chinook salmon	2,986 salmon	0.224 indiv/mt	
Other salmon	0 salmon	0.000 indiv/mt	
Halibut and Herring Discard Pounds	887,000 pounds		
Crab and Salmon Discard Numbers	6,057 individuals		

Appendix 2. Discards in the Gulf of Alaska, 2003: TABLES

TABLE 48.

2003 GROUND FISH SPECIES	AREA: GEAR: TYPE: TARGET:		GOA Trawl Shoreside Deep-water flatfish			
	Harvest mt	Retained mt	Discarded mt	Discard Rate	Rate/ Retain GF	Discard Pounds
Atka Mackerel	0	0	0	-	0.000	0
Pollock	0	0	0	-	0.000	0
Pacific Cod	38	38	0	0.0%	0.000	0
Deep-water flatfish	328	328	0	0.0%	0.000	0
Rex sole	0	0	0	-	0.000	0
Arrowtooth Flounder	243	35	208	85.6%	0.434	458,000
Shallow-water flatfish	11	11	0	0.0%	0.000	0
Flathead sole	6	6	0	0.0%	0.000	0
Pacific ocean perch	1	0	1	100.0%	0.001	1,000
Pelagic shelf rockfish	0	0	0	-	0.000	0
Slope rockfish	0	0	0	-	0.000	0
Shortraker/rougheye rockfish	54	14	40	74.3%	0.084	89,000
Northern rockfish	0	0	0	-	0.000	0
Demersal shelf rockfish	0	0	0	-	0.000	0
Thornyhead rockfish	56	21	35	62.9%	0.074	78,000
Sablefish	76	24	51	68.0%	0.108	113,000
Other groundfish	2	0	2	78.9%	0.004	4,000
TOTAL	816	479	337	41.3%	0.704	743,000

PROHIBITED SPECIES	Discarded BYCATCH	Rate/ Retain GF	Discard Pounds
Halibut (mt)	37 mt	77 kg/mt	82,000
Halibut Mortality (mt)	21 mt	43 kg/mt	46,000
Herring (mt)	0 mt	0 kg/mt	0
C. bairdi Tanner crab	0 crab	0.000 indiv/mt	
Other Tanner crab	0 crab	0.000 indiv/mt	
Red king crab	0 crab	0.000 indiv/mt	
Other king crab	0 crab	0.000 indiv/mt	
Chinook salmon	0 salmon	0.000 indiv/mt	
Other salmon	0 salmon	0.000 indiv/mt	
Halibut and Herring Discard Pounds	46,000 pounds		
Crab and Salmon Discard Numbers	0 individuals		

Appendix 2. Discards in the Gulf of Alaska, 2003: TABLES

TABLE 49.

2003 GROUND FISH SPECIES	AREA: GEAR: TYPE: TARGET:		GOA Trawl Shoreside Shallow-water flatfish			
	Harvest mt	Retained mt	Discarded mt	Discard Rate	Rate/ Retain GF	Discard Pounds
Atka Mackerel	0	0	0	-	0.000	1,000
Pollock	130	71	59	45.2%	0.011	130,000
Pacific Cod	1,550	630	920	59.3%	0.179	2,028,000
Deep-water flatfish	19	19	0	0.0%	0.000	0
Rex sole	18	17	0	1.4%	0.000	1,000
Arrowtooth Flounder	2,114	320	1,794	84.9%	0.349	3,955,000
Shallow-water flatfish	3,311	3,218	93	2.8%	0.018	206,000
Flathead sole	353	346	8	2.2%	0.002	17,000
Pacific ocean perch	0	0	0	-	0.000	0
Pelagic shelf rockfish	4	0	4	97.3%	0.001	8,000
Slope rockfish	0	0	0	-	0.000	0
Shortraker/rougheye rockfish	0	0	0	-	0.000	0
Northern rockfish	2	0	2	100.0%	0.000	5,000
Demersal shelf rockfish	0	0	0	-	0.000	0
Thornyhead rockfish	0	0	0	-	0.000	0
Sablefish	5	2	3	56.7%	0.001	6,000
Other groundfish	699	511	189	27.0%	0.037	416,000
TOTAL	8,206	5,134	3,072	37.4%	0.598	6,773,000

PROHIBITED SPECIES	Discarded BYCATCH	Rate/ Retain GF	Discard Pounds
Halibut (mt)	754 mt	147 kg/mt	1,662,000
Halibut Mortality (mt)	520 mt	101 kg/mt	1,147,000
Herring (mt)	0 mt	0 kg/mt	0
C. bairdi Tanner crab	59,211 crab	11.532 indiv/mt	
Other Tanner crab	378 crab	0.074 indiv/mt	
Red king crab	0 crab	0.000 indiv/mt	
Other king crab	0 crab	0.000 indiv/mt	
Chinook salmon	115 salmon	0.022 indiv/mt	
Other salmon	0 salmon	0.000 indiv/mt	
Halibut and Herring Discard Pounds	1,147,000 pounds		
Crab and Salmon Discard Numbers	59,704 individuals		

Appendix 2. Discards in the Gulf of Alaska, 2003: TABLES

TABLE 50.

2003 GROUND FISH SPECIES	AREA: GEAR: TYPE: TARGET:		GOA Trawl Shoreside Rockfish			
	Harvest mt	Retained mt	Discarded mt	Discard Rate	Rate/ Retain GF	Discard Pounds
Atka Mackerel	19	12	7	34.8%	0.001	15,000
Pollock	40	30	10	25.4%	0.001	22,000
Pacific Cod	1,630	1,458	172	10.6%	0.014	380,000
Deep-water flatfish	66	33	33	49.6%	0.003	72,000
Rex sole	70	39	31	43.7%	0.003	67,000
Arrowtooth Flounder	877	239	638	72.8%	0.053	1,408,000
Shallow-water flatfish	110	43	67	61.2%	0.006	148,000
Flathead sole	73	53	20	27.7%	0.002	44,000
Pacific ocean perch	5,303	5,147	157	3.0%	0.013	345,000
Pelagic shelf rockfish	1,445	1,443	2	0.1%	0.000	5,000
Slope rockfish	51	47	3	6.4%	0.000	7,000
Shortraker/rougheye rockfish	59	29	29	50.4%	0.002	65,000
Northern rockfish	2,954	2,933	20	0.7%	0.002	45,000
Demersal shelf rockfish	0	0	0	-	0.000	0
Thornyhead rockfish	69	57	12	17.0%	0.001	26,000
Sablefish	562	505	57	10.1%	0.005	125,000
Other groundfish	133	22	111	83.3%	0.009	245,000
TOTAL	13,460	12,090	1,370	10.2%	0.113	3,020,000

PROHIBITED SPECIES	Discarded BYCATCH	Rate/ Retain GF	Discard Pounds
Halibut (mt)	236 mt	20 kg/mt	520,000
Halibut Mortality (mt)	156 mt	13 kg/mt	344,000
Herring (mt)	0 mt	0 kg/mt	0
C. bairdi Tanner crab	173 crab	0.014 indiv/mt	
Other Tanner crab	0 crab	0.000 indiv/mt	
Red king crab	0 crab	0.000 indiv/mt	
Other king crab	0 crab	0.000 indiv/mt	
Chinook salmon	806 salmon	0.067 indiv/mt	
Other salmon	1,905 salmon	0.158 indiv/mt	
Halibut and Herring Discard Pounds	344,000 pounds		
Crab and Salmon Discard Numbers	2,884 individuals		

Appendix 2. Discards in the Gulf of Alaska, 2003: TABLES

TABLE 51.

2003 GROUND FISH SPECIES	AREA: GEAR: TYPE: TARGET:		GOA Trawl Shoreside "Other"			
	Harvest mt	Retained mt	Discarded mt	Discard Rate	Rate/ Retain GF	Discard Pounds
Atka Mackerel	0	0	0	-	0.000	0
Pollock	0	0	0	-	0.000	0
Pacific Cod	155	104	51	33.0%	0.058	113,000
Deep-water flatfish	0	0	0	-	0.000	0
Rex sole	0	0	0	-	0.000	0
Arrowtooth Flounder	888	21	867	97.7%	0.989	1,911,000
Shallow-water flatfish	180	180	0	0.0%	0.000	0
Flathead sole	61	61	0	0.0%	0.000	0
Pacific ocean perch	0	0	0	-	0.000	0
Pelagic shelf rockfish	0	0	0	-	0.000	0
Slope rockfish	0	0	0	-	0.000	0
Shorthead/rougheye rockfish	0	0	0	-	0.000	0
Northern rockfish	0	0	0	-	0.000	0
Demersal shelf rockfish	0	0	0	-	0.000	0
Thornyhead rockfish	0	0	0	-	0.000	0
Sablefish	0	0	0	-	0.000	0
Other groundfish	571	511	60	10.5%	0.068	132,000
TOTAL	1,855	877	978	52.7%	1.115	2,156,000

PROHIBITED SPECIES	Discarded BYCATCH	Rate/ Retain GF	Discard Pounds
Halibut (mt)	30 mt	34 kg/mt	66,000
Halibut Mortality (mt)	20 mt	22 kg/mt	43,000
Herring (mt)	0 mt	0 kg/mt	0
C. bairdi Tanner crab	12 crab	0.014 indiv/mt	
Other Tanner crab	0 crab	0.000 indiv/mt	
Red king crab	0 crab	0.000 indiv/mt	
Other king crab	0 crab	0.000 indiv/mt	
Chinook salmon	0 salmon	0.000 indiv/mt	
Other salmon	0 salmon	0.000 indiv/mt	
Halibut and Herring Discard Pounds	43,000 pounds		
Crab and Salmon Discard Numbers	12 individuals		

Appendix 2. Discards in the Gulf of Alaska, 2003: TABLES

TABLE 52.

2003	AREA:	GOA				
	GEAR:	Hook-and-line				
	TYPE:	Catcher/processor				
	TARGET:	All				
GROUND FISH	Harvest	Retained	Discarded	Discard	Rate/	Discard
SPECIES	mt	mt	mt	Rate	Retain GF	Pounds
Atka Mackerel	1	0	1	100.0%	0.000	3,000
Pollock	17	16	1	5.7%	0.000	2,000
Pacific Cod	5,753	5,638	114	2.0%	0.015	252,000
Deep-water flatfish	6	1	4	80.3%	0.001	10,000
Rex sole	0	0	0	-	0.000	0
Arrowtooth Flounder	121	36	85	70.5%	0.011	188,000
Shallow-water flatfish	15	3	12	80.7%	0.002	27,000
Flathead sole	2	1	1	56.5%	0.000	3,000
Pacific ocean perch	0	0	0	-	0.000	0
Pelagic shelf rockfish	7	0	7	100.0%	0.001	15,000
Slope rockfish	16	12	4	25.2%	0.001	9,000
Shortraker/rougheye rockfish	163	88	75	45.9%	0.010	165,000
Northern rockfish	2	0	2	100.0%	0.000	4,000
Demersal shelf rockfish	0	0	0	-	0.000	0
Thornyhead rockfish	112	104	7	6.6%	0.001	16,000
Sablefish	1,556	1,541	16	1.0%	0.002	35,000
Other groundfish	588	171	417	70.9%	0.055	920,000
TOTAL	8,359	7,611	748	9.0%	0.098	1,650,000

PROHIBITED SPECIES	Discarded BYCATCH	Rate/ Retain GF	Discard Pounds
Halibut (mt)	653 mt	86 kg/mt	1,439,000
Halibut Mortality (mt)	111 mt	15 kg/mt	245,000
Herring (mt)	0 mt	0 kg/mt	0
C. bairdi Tanner crab	0 crab	0.000 indiv/mt	
Other Tanner crab	0 crab	0.000 indiv/mt	
Red king crab	0 crab	0.000 indiv/mt	
Other king crab	31 crab	0.004 indiv/mt	
Chinook salmon	0 salmon	0.000 indiv/mt	
Other salmon	16 salmon	0.002 indiv/mt	
Halibut and Herring Discard Pounds	245,000 pounds		
Crab and Salmon Discard Numbers	47 individuals		

Appendix 2. Discards in the Gulf of Alaska, 2003: TABLES

TABLE 53.

2003 GROUND FISH SPECIES	AREA:		GOA			
	GEAR:	TYPE:	Hook-and-line Catcher/processor Pacific cod			
	TARGET:					
	Harvest	Retained	Discarded	Discard	Rate/ Retain GF	Discard
	mt	mt	mt	Rate		Pounds
Atka Mackerel	1	0	1	100.0%	0.000	3,000
Pollock	17	16	1	5.5%	0.000	2,000
Pacific Cod	5,736	5,631	105	1.8%	0.018	231,000
Deep-water flatfish	0	0	0	-	0.000	0
Rex sole	0	0	0	-	0.000	0
Arrowtooth Flounder	24	0	24	100.0%	0.004	52,000
Shallow-water flatfish	15	3	12	80.5%	0.002	27,000
Flathead sole	2	1	1	56.5%	0.000	3,000
Pacific ocean perch	0	0	0	-	0.000	0
Pelagic shelf rockfish	7	0	7	100.0%	0.001	15,000
Slope rockfish	9	5	4	-	0.001	9,000
Shortraker/rougheye rockfish	1	0	1	-	0.000	3,000
Northern rockfish	2	0	2	100.0%	0.000	4,000
Demersal shelf rockfish	0	0	0	-	0.000	0
Thornyhead rockfish	0	0	0	-	0.000	0
Sablefish	1	0	1	100.0%	0.000	2,000
Other groundfish	532	166	366	68.7%	0.063	806,000
TOTAL	6,347	5,822	525	8.3%	0.090	1,157,000

PROHIBITED SPECIES	Discarded BYCATCH	Rate/ Retain GF	Discard Pounds
Halibut (mt)	653 mt	112 kg/mt	1,439,000
Halibut Mortality (mt)	111 mt	19 kg/mt	245,000
Herring (mt)	mt	0 kg/mt	0
C. bairdi Tanner crab	crab	0.000 indiv/mt	
Other Tanner crab	crab	0.000 indiv/mt	
Red king crab	crab	0.000 indiv/mt	
Other king crab	crab	0.000 indiv/mt	
Chinook salmon	salmon	0.000 indiv/mt	
Other salmon	salmon	0.000 indiv/mt	
Halibut and Herring Discard Pounds	245,000 pounds		
Crab and Salmon Discard Numbers	0 individuals		

Appendix 2. Discards in the Gulf of Alaska, 2003: TABLES

TABLE 54.

2003 GROUND FISH SPECIES	AREA: GEAR: TYPE: TARGET:		GOA Hook-and-line Catcher/processor Sablefish			
	Harvest mt	Retained mt	Discarded mt	Discard Rate	Rate/ Retain GF	Discard Pounds
Atka Mackerel	0	0	0	-	0.000	0
Pollock	0	0	0	100.0%	0.000	0
Pacific Cod	17	7	10	56.4%	0.005	21,000
Deep-water flatfish	6	1	4	80.3%	0.002	10,000
Rex sole	0	0	0	-	0.000	0
Arrowtooth Flounder	97	36	62	63.4%	0.034	136,000
Shallow-water flatfish	0	0	0	-	0.000	0
Flathead sole	0	0	0	-	0.000	0
Pacific ocean perch	0	0	0	-	0.000	0
Pelagic shelf rockfish	0	0	0	-	0.000	0
Slope rockfish	7	7	0	-	0.000	0
Shortraker/rougheye rockfish	162	88	74	45.5%	0.041	163,000
Northern rockfish	0	0	0	-	0.000	0
Demersal shelf rockfish	0	0	0	-	0.000	0
Thornyhead rockfish	112	104	7	6.6%	0.004	16,000
Sablefish	1,556	1,541	15	1.0%	0.008	33,000
Other groundfish	56	5	52	91.7%	0.029	114,000
TOTAL	2,013	1,789	224	11.1%	0.125	493,000

PROHIBITED SPECIES	Discarded BYCATCH	Rate/ Retain GF	Discard Pounds
Halibut (mt)	n/a	kg/mt	0
Halibut Mortality (mt)	n/a	kg/mt	n/a
Herring (mt)	0 mt	0 kg/mt	0
C. bairdi Tanner crab	0 crab	0.000 indiv/mt	
Other Tanner crab	0 crab	0.000 indiv/mt	
Red king crab	0 crab	0.000 indiv/mt	
Other king crab	31 crab	0.017 indiv/mt	
Chinook salmon	0 salmon	0.000 indiv/mt	
Other salmon	16 salmon	0.009 indiv/mt	
Halibut and Herring Discard Pounds	n/a pounds		
Crab and Salmon Discard Numbers	47 individuals		

Appendix 2. Discards in the Gulf of Alaska, 2003: TABLES

TABLE 55.

2003 GROUND FISH SPECIES	AREA:		GOA			
	Harvest mt	Retained mt	Discarded mt	Discard Rate	Rate/ Retain GF	Discard Pounds
Atka Mackerel	0	0	0	-	0.000	0
Pollock	31	31	0	0.7%	0.000	0
Pacific Cod	3,481	3,383	98	2.8%	0.006	216,000
Deep-water flatfish	9	0	9	100.0%	0.001	20,000
Rex sole	3	0	3	100.0%	0.000	6,000
Arrowtooth Flounder	164	0	164	100.0%	0.010	362,000
Shallow-water flatfish	3	0	3	100.0%	0.000	7,000
Flathead sole	0	0	0	-	0.000	0
Pacific ocean perch	1	1	0	0.5%	0.000	0
Pelagic shelf rockfish	11	11	0	0.9%	0.000	0
Slope rockfish	80	74	6	7.1%	0.000	13,000
Shortraker/rougheye rockfish	342	230	111	32.6%	0.007	246,000
Northern rockfish	0	0	0	-	0.000	0
Demersal shelf rockfish	222	221	0	0.2%	0.000	1,000
Thornyhead rockfish	275	245	30	10.9%	0.002	66,000
Sablefish	11,539	11,142	397	3.4%	0.024	874,000
Other groundfish	1,703	1,379	324	19.0%	0.019	715,000
TOTAL	17,862	16,716	1,146	6.4%	0.069	2,526,000

PROHIBITED SPECIES	Discarded BYCATCH	Rate/ Retain GF	
Halibut (mt)	1,060 mt	63 kg/mt	2,528,000
Halibut Mortality (mt)	180 mt	11 kg/mt	411,000
Herring (mt)	0 mt	0 kg/mt	0
C. bairdi Tanner crab	23 crab	0.001 indiv/mt	
Other Tanner crab	37 crab	0.002 indiv/mt	
Red king crab	29 crab	0.002 indiv/mt	
Other king crab	191 crab	0.011 indiv/mt	
Chinook salmon	0 salmon	0.000 indiv/mt	
Other salmon	166 salmon	0.010 indiv/mt	
Halibut and Herring Discard Pounds	411,000 pounds		
Crab and Salmon Discard Numbers	446 individuals		

Appendix 2. Discards in the Gulf of Alaska, 2003: TABLES

TABLE 56.

2003 GROUND FISH SPECIES	AREA: GEAR: TYPE: TARGET:		GOA Hook-and-line Shoreside Pacific cod			
	Harvest mt	Retained mt	Discarded mt	Discard Rate	Rate/ Retain GF	Discard Pounds
Atka Mackerel	0	0	0	-	0.000	0
Pollock	31	31	0	0.0%	0.000	0
Pacific Cod	3,248	3,205	43	1.3%	0.013	95,000
Deep-water flatfish	0	0	0	-	0.000	0
Rex sole	0	0	0	-	0.000	0
Arrowtooth Flounder	5	0	5	100.0%	0.001	10,000
Shallow-water flatfish	0	0	0	-	0.000	0
Flathead sole	0	0	0	-	0.000	0
Pacific ocean perch	0	0	0	-	0.000	0
Pelagic shelf rockfish	1	1	0	0.0%	0.000	0
Slope rockfish	4	4	0	5.7%	0.000	1,000
Shortraker/rougheye rockfish	3	3	0	0.0%	0.000	0
Northern rockfish	0	0	0	-	0.000	0
Demersal shelf rockfish	2	2	0	0.0%	0.000	0
Thornyhead rockfish	1	1	0	0.0%	0.000	0
Sablefish	6	4	2	30.6%	0.001	4,000
Other groundfish	228	60	168	73.7%	0.051	371,000
TOTAL	3,528	3,310	218	6.2%	0.066	480,000

PROHIBITED SPECIES	Discarded BYCATCH	Rate/ Retain GF	Discard Pounds
Halibut (mt)	472 mt	142 kg/mt	1,040,000
Halibut Mortality (mt)	80 mt	24 kg/mt	177,000
Herring (mt)	0 mt	0 kg/mt	0
C. bairdi Tanner crab	0 crab	0.000 indiv/mt	
Other Tanner crab	0 crab	0.000 indiv/mt	
Red king crab	0 crab	0.000 indiv/mt	
Other king crab	0 crab	0.000 indiv/mt	
Chinook salmon	0 salmon	0.000 indiv/mt	
Other salmon	0 salmon	0.000 indiv/mt	
Halibut and Herring Discard Pounds	177,000 pounds		
Crab and Salmon Discard Numbers	0 individuals		

Appendix 2. Discards in the Gulf of Alaska, 2003: TABLES

TABLE 57.

2003 GROUND FISH SPECIES	AREA: GEAR: TYPE: TARGET:		GOA Hook-and-line Shoreside Rockfish			
	Harvest mt	Retained mt	Discarded mt	Discard Rate	Rate/ Retain GF	Discard Pounds
Atka Mackerel	0	0	0	-	0.000	0
Pollock	0	0	0	-	0.000	0
Pacific Cod	18	18	0	0.0%	0.000	0
Deep-water flatfish	0	0	0	-	0.000	0
Rex sole	0	0	0	-	0.000	0
Arrowtooth Flounder	0	0	0	-	0.000	0
Shallow-water flatfish	0	0	0	-	0.000	0
Flathead sole	0	0	0	-	0.000	0
Pacific ocean perch	0	0	0	-	0.000	0
Pelagic shelf rockfish	10	10	0	0.0%	0.000	0
Slope rockfish	36	36	0	0.0%	0.000	0
Shortraker/rougheye rockfish	31	31	0	0.4%	0.000	0
Northern rockfish	0	0	0	-	0.000	0
Demersal shelf rockfish	197	197	0	0.0%	0.000	0
Thornyhead rockfish	8	8	0	0.0%	0.000	0
Sablefish	8	8	0	0.0%	0.000	0
Other groundfish	0	0	0	-	0.000	0
TOTAL	307	307	0	0.1%	0.001	0

PROHIBITED SPECIES	Discarded BYCATCH	Rate/ Retain GF	Discard Pounds
Halibut (mt)	0 mt	0 kg/mt	0
Halibut Mortality (mt)	0 mt	0 kg/mt	0
Herring (mt)	0 mt	0 kg/mt	0
C. bairdi Tanner crab	0 crab	0.000 indiv/mt	
Other Tanner crab	0 crab	0.000 indiv/mt	
Red king crab	0 crab	0.000 indiv/mt	
Other king crab	0 crab	0.000 indiv/mt	
Chinook salmon	0 salmon	0.000 indiv/mt	
Other salmon	0 salmon	0.000 indiv/mt	
Halibut and Herring Discard Pounds	0 pounds		
Crab and Salmon Discard Numbers	0 individuals		

Appendix 2. Discards in the Gulf of Alaska, 2003: TABLES

TABLE 58.

2003 GROUND FISH SPECIES	AREA: GEAR: TYPE: TARGET:		GOA Hook-and-line Shoreside Sablefish			
	Harvest mt	Retained mt	Discarded mt	Discard Rate	Rate/ Retain GF	Discard Pounds
Atka Mackerel	0	0	0	-	0.000	0
Pollock	0	0	0	100.0%	0.000	0
Pacific Cod	82	27	55	67.3%	0.005	121,000
Deep-water flatfish	9	0	9	100.0%	0.001	20,000
Rex sole	3	0	3	-	0.000	6,000
Arrowtooth Flounder	159	0	159	100.0%	0.014	351,000
Shallow-water flatfish	3	0	3	100.0%	0.000	7,000
Flathead sole	0	0	0	-	0.000	0
Pacific ocean perch	1	1	0	0.6%	0.000	0
Pelagic shelf rockfish	1	0	0	17.6%	0.000	0
Slope rockfish	39	34	5	13.8%	0.000	12,000
Shortraker/rougheye rockfish	308	197	111	36.2%	0.010	246,000
Northern rockfish	0	0	0	-	0.000	0
Demersal shelf rockfish	23	23	0	1.6%	0.000	1,000
Thornyhead rockfish	266	236	30	11.3%	0.003	66,000
Sablefish	11,525	11,130	395	3.4%	0.034	871,000
Other groundfish	153	0	153	99.9%	0.013	337,000
TOTAL	12,572	11,648	924	7.4%	0.079	2,038,000

PROHIBITED SPECIES	Discarded BYCATCH	Rate/ Retain GF	Discard Pounds
Halibut (mt)	n/a mt	kg/mt	0
Halibut Mortality (mt)	n/a mt	kg/mt	n/a
Herring (mt)	0 mt	0 kg/mt	0
C. bairdi Tanner crab	23 crab	0.002 indiv/mt	
Other Tanner crab	37 crab	0.003 indiv/mt	
Red king crab	29 crab	0.002 indiv/mt	
Other king crab	191 crab	0.016 indiv/mt	
Chinook salmon	0 salmon	0.000 indiv/mt	
Other salmon	166 salmon	0.014 indiv/mt	
Halibut and Herring Discard Pounds	n/a pounds		
Crab and Salmon Discard Numbers	446 individuals		

Appendix 2. Discards in the Gulf of Alaska, 2003: TABLES

TABLE 59.

2003 GROUND FISH SPECIES	AREA: GEAR: TYPE: TARGET:		GOA Hook-and-line Shoreside "Other"			
	Harvest mt	Retained mt	Discarded mt	Discard Rate	Rate/ Retain GF	Discard Pounds
Atka Mackerel	0	0	0	-	0.000	0
Pollock	0	0	0	-	0.000	0
Pacific Cod	133	133	0	0.0%	0.000	0
Deep-water flatfish	0	0	0	-	0.000	0
Rex sole	0	0	0	-	0.000	0
Arrowtooth Flounder	0	0	0	-	0.000	0
Shallow-water flatfish	0	0	0	-	0.000	0
Flathead sole	0	0	0	-	0.000	0
Pacific ocean perch	0	0	0	-	0.000	0
Pelagic shelf rockfish	0	0	0	-	0.000	0
Slope rockfish	0	0	0	-	0.000	0
Shortraker/rougheye rockfish	0	0	0	-	0.000	0
Northern rockfish	0	0	0	-	0.000	0
Demersal shelf rockfish	0	0	0	-	0.000	0
Thornyhead rockfish	0	0	0	-	0.000	0
Sablefish	0	0	0	-	0.000	0
Other groundfish	1,322	1,318	3	0.3%	0.002	8,000
TOTAL	1,455	1,451	3	0.2%	0.002	8,000

PROHIBITED SPECIES	Discarded BYCATCH	Rate/ Retain GF	Discard Pounds
Halibut (mt)	588 mt	405 kg/mt	1,297,000
Halibut Mortality (mt)	100 mt	69 kg/mt	220,000
Herring (mt)	0 mt	0 kg/mt	0
C. bairdi Tanner crab	0 crab	0.000 indiv/mt	
Other Tanner crab	0 crab	0.000 indiv/mt	
Red king crab	0 crab	0.000 indiv/mt	
Other king crab	0 crab	0.000 indiv/mt	
Chinook salmon	0 salmon	0.000 indiv/mt	
Other salmon	0 salmon	0.000 indiv/mt	
Halibut and Herring Discard Pounds	220,000 pounds		
Crab and Salmon Discard Numbers	0 individuals		

Appendix 2. Discards in the Gulf of Alaska, 2003: TABLES

TABLE 60.

2003 GROUND FISH SPECIES	AREA: GEAR: TYPE: TARGET:		GOA Pot All All			
	Harvest mt	Retained mt	Discarded mt	Discard Rate	Rate/ Retain GF	Discard Pounds
Atka Mackerel	8	0	8	100.0%	0.000	17,000
Pollock	9	1	8	90.2%	0.000	18,000
Pacific Cod	20,593	20,568	25	0.1%	0.001	55,000
Deep-water flatfish	0	0	0	-	0.000	0
Rex sole	0	0	0	-	0.000	0
Arrowtooth Flounder	2	0	2	99.1%	0.000	5,000
Shallow-water flatfish	5	0	5	100.0%	0.000	11,000
Flathead sole	0	0	0	-	0.000	0
Pacific ocean perch	0	0	0	-	0.000	0
Pelagic shelf rockfish	6	0	6	100.0%	0.000	14,000
Slope rockfish	2	0	2	100.0%	0.000	5,000
Shortraker/rougheye rockfish	0	0	0	-	0.000	0
Northern rockfish	1	0	1	100.0%	0.000	1,000
Demersal shelf rockfish	0	0	0	-	0.000	0
Thornyhead rockfish	0	0	0	-	0.000	0
Sablefish	0	0	0	-	0.000	0
Other groundfish	415	38	377	90.9%	0.018	832,000
TOTAL	21,041	20,607	434	2.1%	0.021	958,000

PROHIBITED SPECIES	Discarded BYCATCH	Rate/ Retain GF	Discard Pounds
Halibut (mt)	97 mt	5 kg/mt	214,000
Halibut Mortality (mt)	14 mt	1 kg/mt	30,000
Herring (mt)	0 mt	0 kg/mt	0
C. bairdi Tanner crab	10,068 crab	478 indiv/mt	
Other Tanner crab	0 crab	0 indiv/mt	
Red king crab	0 crab	0 indiv/mt	
Other king crab	0 crab	0 indiv/mt	
Chinook salmon	0 salmon	0 indiv/mt	
Other salmon	0 salmon	0 indiv/mt	
Halibut and Herring Discard Pounds	30,000 pounds		
Crab and Salmon Discard Numbers	10,068 individuals		

Appendix 2. Discards in the Gulf of Alaska, 2003: TABLES

TABLE 61.

2003 GROUND FISH SPECIES	AREA: GEAR: TYPE: TARGET:		GOA Pot Shoreside Pacific cod			
	Harvest mt	Retained mt	Discarded mt	Discard Rate	Rate/ Retain GF	Discard Pounds
Atka Mackerel	8	0	8	100.0%	0.000	17,000
Pollock	9	1	8	90.2%	0.000	18,000
Pacific Cod	20,593	20,568	25	0.1%	0.001	55,000
Deep-water flatfish	0	0	0	-	0.000	0
Rex sole	0	0	0	-	0.000	0
Arrowtooth Flounder	2	0	2	99.1%	0.000	5,000
Shallow-water flatfish	5	0	5	100.0%	0.000	11,000
Flathead sole	0	0	0	-	0.000	0
Pacific ocean perch	0	0	0	-	0.000	0
Pelagic shelf rockfish	6	0	6	100.0%	0.000	14,000
Slope rockfish	2	0	2	100.0%	0.000	5,000
Shortraker/rougheye rockfish	0	0	0	-	0.000	0
Northern rockfish	1	0	1	100.0%	0.000	1,000
Demersal shelf rockfish	0	0	0	-	0.000	0
Black and blue rockfish	0	0	0	-	0.000	0
Thornyhead rockfish	0	0	0	-	0.000	0
Sablefish	0	0	0	-	0.000	0
Other groundfish	415	38	377	90.9%	0.018	832,000
TOTAL	21,041	20,607	434	2.1%	0.021	958,000

PROHIBITED SPECIES	Discarded BYCATCH	Rate/ Retain GF	Discard Pounds
Halibut (mt)	97 mt	5 kg/mt	214,000
Halibut Mortality (mt)	14 mt	1 kg/mt	30,000
Herring (mt)	0 mt	0 kg/mt	0
C. bairdi Tanner crab	10,068 crab	0.489 indiv/mt	
Other Tanner crab	0 crab	0.000 indiv/mt	
Red king crab	0 crab	0.000 indiv/mt	
Other king crab	0 crab	0.000 indiv/mt	
Chinook salmon	0 salmon	0.000 indiv/mt	
Other salmon	0 salmon	0.000 indiv/mt	
Halibut and Herring Discard Pounds	30,000 pounds		
Crab and Salmon Discard Numbers	10,068 individuals		

Appendix 2. Discards in the Gulf of Alaska, 2003: TABLES

TABLE 62.

2003 GROUND FISH SPECIES	AREA: GEAR: TYPE: TARGET:		GOA Jig Shoreside Pacific cod			
	Harvest mt	Retained mt	Discarded mt	Discard Rate	Rate/ Retain GF	Discard Pounds
Atka Mackerel	0	0	0	-	0.000	0
Pollock	0	0	0	-	0.000	0
Pacific Cod	3,391	3,391	0	0.0%	0.000	0
Deep-water flatfish	0	0	0	-	0.000	0
Rex sole	0	0	0	-	0.000	0
Arrowtooth Flounder	0	0	0	-	0.000	0
Shallow-water flatfish	0	0	0	-	0.000	0
Flathead sole	0	0	0	-	0.000	0
Pacific ocean perch	0	0	0	-	0.000	0
Pelagic shelf rockfish	0	0	0	-	0.000	0
Slope rockfish	0	0	0	-	0.000	0
Shortraker/rougheye rockfish	0	0	0	-	0.000	0
Northern rockfish	0	0	0	-	0.000	0
Demersal shelf rockfish	0	0	0	-	0.000	0
Black and blue rockfish	0	0	0	-	0.000	0
Thornyhead rockfish	0	0	0	-	0.000	0
Sablefish	0	0	0	-	0.000	0
Other groundfish	0	0	0	-	0.000	0
TOTAL	3,391	3,391	0	0.0%	0.000	0

PROHIBITED SPECIES	Discarded BYCATCH	Discard Rate/ Retained GF mt	Discard Pounds
Halibut (mt)	0 mt	0 kg/mt	0
Halibut Mortality (mt)	0 mt	0 kg/mt	0
Herring (mt)	0 mt	0 kg/mt	0
C. bairdi Tanner crab	0 crab	0.000 indiv/mt	
Other Tanner crab	0 crab	0.000 indiv/mt	
Red king crab	0 crab	0.000 indiv/mt	
Other king crab	0 crab	0.000 indiv/mt	
Chinook salmon	0 salmon	0.000 indiv/mt	
Other salmon	0 salmon	0.000 indiv/mt	
Halibut and Herring Discard Pounds	0 pounds		
Crab and Salmon Discard Numbers	0 individuals		

Appendix 2. Discards in the Gulf of Alaska, 2003: TABLES

TABLE 63.

2003 GROUND FISH SPECIES	AREA: GEAR: TYPE: TARGET:		GOA Jig Shoreside Rockfish			
	Harvest mt	Retained mt	Discarded mt	Discard Rate	Rate/ Retain GF	Discard Pounds
Atka Mackerel	0	0	0	-	0.000	0
Pollock	0	0	0	-	0.000	0
Pacific Cod	0	0	0	0.0%	0.000	0
Deep-water flatfish	0	0	0	-	0.000	0
Rex sole	0	0	0	-	0.000	0
Arrowtooth Flounder	0	0	0	-	0.000	0
Shallow-water flatfish	0	0	0	-	0.000	0
Flathead sole	0	0	0	-	0.000	0
Pacific ocean perch	0	0	0	-	0.000	0
Pelagic shelf rockfish	11	11	0	0.0%	0.000	0
Slope rockfish	14	14	0	0.0%	0.000	0
Shortraker/rougheye rockfish	0	0	0	-	0.000	0
Northern rockfish	0	0	0	-	0.000	0
Demersal shelf rockfish	25	25	0	0.0%	0.000	0
Black and blue rockfish	0	0	0	-	0.000	0
Thornyhead rockfish	0	0	0	-	0.000	0
Sablefish	0	0	0	-	0.000	0
Other groundfish	0	0	0	-	0.000	0
TOTAL	51	51	0	0.0%	0.000	0

PROHIBITED SPECIES	Discarded BYCATCH	Rate/ Retain GF	Discard Pounds
Halibut (mt)	0 mt	0 kg/mt	0
Halibut Mortality (mt)	0 mt	0 kg/mt	0
Herring (mt)	0 mt	0 kg/mt	0
C. bairdi Tanner crab	0 crab	0.000 indiv/mt	
Other Tanner crab	0 crab	0.000 indiv/mt	
Red king crab	0 crab	0.000 indiv/mt	
Other king crab	0 crab	0.000 indiv/mt	
Chinook salmon	0 salmon	0.000 indiv/mt	
Other salmon	0 salmon	0.000 indiv/mt	
Halibut and Herring Discard Pounds	0 pounds		
Crab and Salmon Discard Numbers	0 individuals		

APPENDIX 3.

COMMUNITY DEVELOPMENT QUOTA
(CDQ)

CATCH AND DISCARD TABLES

2003

Appendix 3. Discards in the CDQ Fisheries, 2003: TABLES

Appendix 3. Discards in the CDQ Fisheries, 2003: TABLES

TABLE 64.

2003	CDQ	AREA:		BSAI			
		GEAR:	TYPE:	TARGET:			
GROUND FISH SPECIES		Harvest mt	Retained mt	Discarded mt	Discard Rate	Rate/ Retain GF	Discard Pounds
	Atka Mackerel	2	2	0	0.0%	0.000	0
	Pollock	148,766	148,766	0	0.0%	0.000	0
	Pacific Cod	14,124	14,124	0	0.0%	0.000	0
	Yellowfin sole	5,201	5,201	0	0.0%	0.000	0
	Rock sole	328	328	0	0.0%	0.000	0
	Flathead sole	353	353	0	0.0%	0.000	0
	Alaska Plaice	119	119	0	0.0%	0.000	0
	Other flatfish	79	79	0	0.0%	0.000	0
	Greenland turbot	43	33	10	22.6%	0.000	21,000
	Arrowtooth flounder	361	343	18	5.1%	0.000	40,000
	Pacific ocean perch	7	7	0	0.0%	0.000	0
	Northern rockfish	2	2	0	0.0%	0.000	0
	Shortraker/rougheye rockfish	7	7	0	0.0%	0.000	0
	Other rockfish	3	3	0	0.0%	0.000	0
	Sablefish	169	169	0	0.0%	0.000	0
	Other Species	2,217	2,217	0	0.0%	0.000	0
TOTAL		171,781	171,753	28	0.0%	0.000	62,000

PROHIBITED SPECIES	Discarded BYCATCH	Rate/ Retain GF	Discard Pounds
Halibut (mt)	714 mt	4 kg/mt	1574000
Halibut Mortality (mt)	144 mt	1 kg/mt	317,000
Herring (mt)	0 mt	0 kg/mt	0
C. bairdi Tanner crab	11,816 crab	0.069 indiv/mt	
Other Tanner crab	4,927 crab	0.029 indiv/mt	
Red king crab	1,883 crab	0.011 indiv/mt	
Other king crab	0 crab	0.000 indiv/mt	
Chinook salmon	2,565 salmon	0.015 indiv/mt	
Other salmon	5,287 salmon	0.031 indiv/mt	
Halibut and Herring Discard Pounds			317,000 pounds
Crab and Salmon Discard Numbers			26,478 individuals

Appendix 3. Discards in the CDQ Fisheries, 2003: TABLES

TABLE 65.

2003 CDQ	AREA:		BSAI			
	GEAR:	TYPE:	Trawl	Catcher/processor	Midwater pollock	TARGET:
GROUND FISH SPECIES	Harvest mt	Retained mt	Discarded mt	Discard Rate	Rate/ Retain GF	Discard Pounds
Atka Mackerel	1	1	0	0.0%	0.000	0
Pollock	148,766	148,766	0	0.0%	0.000	0
Pacific Cod	438	438	0	0.0%	0.000	0
Yellowfin sole	25	25	0	0.0%	0.000	0
Rock sole	141	141	0	0.0%	0.000	0
Flathead sole	213	213	0	0.0%	0.000	0
Alaska plaice	1	1	0	0.0%	0.000	0
Other flatfish	68	68	0	0.0%	0.000	0
Greenland turbot	16	16	0	0.0%	0.000	0
Arrowtooth flounder	150	150	0	0.0%	0.000	0
Pacific ocean perch	7	7	0	0.0%	0.000	0
Northern rockfish	2	2	0	0.0%	0.000	0
Shortraker/rougheye rockfish	7	7	0	0.0%	0.000	0
Other rockfish	1	1	0	0.0%	0.000	0
Sablefish	6	6	0	0.0%	0.000	0
Other Species	130	130	0	0.0%	0.000	0
TOTAL	149,971	149,971	0	0.0%	0.000	0

PROHIBITED SPECIES	Discarded BYCATCH	Rate/ Retain GF	Discard Pounds
Halibut (mt)	25 mt	0 kg/mt	55,000
Halibut Mortality (mt)	22 mt	0 kg/mt	48,000
Herring (mt)	0 mt	0 kg/mt	0
C. bairdi Tanner crab	0 crab	0.000 indiv/mt	
Other Tanner crab	134 crab	0.001 indiv/mt	
Red king crab	0 crab	0.000 indiv/mt	
Other king crab	0 crab	0.000 indiv/mt	
Chinook salmon	2,565 salmon	0.017 indiv/mt	
Other salmon	5,287 salmon	0.035 indiv/mt	
Halibut and Herring Discard Pounds	48,000 pounds		
Crab and Salmon Discard Numbers	7,986 individuals		

Appendix 3. Discards in the CDQ Fisheries, 2003: TABLES

TABLE 66.

2003	CDQ	AREA:	BSAI				
		GEAR:	Trawl				
		TYPE:	Catcher/processor				
		TARGET:	Yellowfin sole				
GROUND FISH		Harvest	Retained	Discarded	Discard	Rate/	Discard
SPECIES		mt	mt	mt	Rate	Retain GF	Pounds
Atka Mackerel		0	0	0	-	0.000	0
Pollock		0	0	0	-	0.000	0
Pacific Cod		101	101	0	0.0%	0.000	0
Yellowfin sole		5,126	5,126	0	0.0%	0.000	0
Rock sole		177	177	0	0.0%	0.000	0
Flathead sole		90	90	0	0.0%	0.000	0
Alaska plaice		118	118	0	0.0%	0.000	0
Other flatfish		10	10	0	0.0%	0.000	0
Greenland turbot		0	0	0	-	0.000	0
Arrowtooth flounder		47	47	0	0.0%	0.000	0
Pacific ocean perch		0	0	0	-	0.000	0
Northern rockfish		0	0	0	-	0.000	0
Shortraker/rougeye rockfish		0	0	0	-	0.000	0
Other rockfish		0	0	0	-	0.000	0
Sablefish		0	0	0	-	0.000	0
Other Species		110	110	0	0.0%	0.000	0
TOTAL		5,779	5,779	0	0.0%	0.000	0
PROHIBITED SPECIES				Discarded	Discard Rate/	Discard	
				BYCATCH	Retained GF mt	Pounds	
Halibut (mt)				75 mt	13 kg/mt	165,000	
Halibut Mortality (mt)				61 mt	10 kg/mt	134,000	
Herring (mt)				0 mt	0 kg/mt	0	
C. bairdi Tanner crab				11,816 crab	2 indiv/mt		
Other Tanner crab				4,793 crab	1 indiv/mt		
Red king crab				1,883 crab	0 indiv/mt		
Other king crab				0 crab	0 indiv/mt		
Chinook salmon				0 salmon	0 indiv/mt		
Other salmon				0 salmon	0 indiv/mt		
Halibut and Herring Discard Pounds				134,000 pounds			
Crab and Salmon Discard Numbers				18,492 individuals			

Appendix 3. Discards in the CDQ Fisheries, 2003: TABLES

TABLE 67.

2003	CDQ	AREA:	BSAI				
		GEAR:	Hook and line				
		TYPE:	Catcher/processor				
		TARGET:	Pacific cod				
GROUND FISH		Harvest	Retained	Discarded	Discard	Rate/	Discard
SPECIES		mt	mt	mt	Rate	Retain GF	Pounds
Atka Mackerel		1	1	0	0.0%	0.000	0
Pollock		0	0	0	-	0.000	0
Pacific Cod		13,584	13,584	0	0.0%	0.000	0
Yellowfin sole		51	51	0	0.0%	0.000	0
Rock sole		10	10	0	0.0%	0.000	0
Flathead sole		50	50	0	0.0%	0.000	0
Alaska plaice		0	0	0	0.0%	0.000	0
Other flatfish		1	1	0	0.0%	0.000	0
Greenland turbot		13	13	0	0.0%	0.000	0
Arrowtooth flounder		142	142	0	0.0%	0.000	0
Pacific ocean perch		0	0	0	-	0.000	0
Northern rockfish		0	0	0	0.0%	0.000	0
Shortraker/rougheye rockfish		0	0	0	0.0%	0.000	0
Other rockfish		1	1	0	0.0%	0.000	0
Sablefish		0	0	0	0.0%	0.000	0
Other Species		1,977	1,977	0	0.0%	0.000	0
TOTAL		15,830	15,830	0	0.0%	0.000	0

PROHIBITED SPECIES	Discarded BYCATCH	Rate/ Retain GF	Discard Pounds
Halibut (mt)	614 mt	39 kg/mt	1,354,000
Halibut Mortality (mt)	61 mt	4 kg/mt	135,000
Herring (mt)	0 mt	0 kg/mt	0
C. bairdi Tanner crab	0 crab	0.000 indiv/mt	
Other Tanner crab	0 crab	0.000 indiv/mt	
Red king crab	0 crab	0.000 indiv/mt	
Other king crab	0 crab	0.000 indiv/mt	
Chinook salmon	0 salmon	0.000 indiv/mt	
Other salmon	0 salmon	0.000 indiv/mt	
Halibut and Herring Discard Pounds	135,000 pounds		
Crab and Salmon Discard Numbers	0 individuals		

Appendix 3. Discards in the CDQ Fisheries, 2003: TABLES

TABLE 68.

2003	CDQ	AREA:		BSAI			Discard Pounds
		GEAR:	Pot	Discard Rate	Rate/Retain GF		
		TYPE:	Shoreside				
		TARGET:	Sablefish				
GROUND FISH SPECIES		Harvest mt	Retained mt	Discarded mt	Discard Rate	Rate/ Retain GF	Discard Pounds
Atka Mackerel		0	0	0	-	0.000	0
Pollock		0	0	0	-	0.000	0
Pacific Cod		0	0	0	-	0.000	0
Yellowfin sole		0	0	0	-	0.000	0
Rock sole		0	0	0	-	0.000	0
Flathead sole		0	0	0	-	0.000	0
Alaska plaice		0	0	0	-	0.000	0
Other flatfish		0	0	0	-	0.000	0
Greenland turbot		14	4	10	69.2%	0.056	21,000
Arrowtooth flounder		23	5	18	79.6%	0.106	40,000
Pacific ocean perch		0	0	0	-	0.000	0
Northern rockfish		0	0	0	-	0.000	0
Shortraker/rougheye rockfish		0	0	0	-	0.000	0
Other rockfish		0	0	0	-	0.000	0
Sablefish		163	163	0	0.0%	0.000	0
Other Species		0	0	0	-	0.000	0
TOTAL		201	173	28	14.0%	0.162	62,000

PROHIBITED SPECIES	Discarded BYCATCH	Rate/ Retain GF	Discard Pounds
Halibut (mt)	0 mt	0 kg/mt	0
Halibut Mortality (mt)	0 mt	0 kg/mt	0
Herring (mt)	0 mt	0 kg/mt	0
C. bairdi Tanner crab	0 crab	0.000 indiv/mt	
Other Tanner crab	0 crab	0.000 indiv/mt	
Red king crab	0 crab	0.000 indiv/mt	
Other king crab	0 crab	0.000 indiv/mt	
Chinook salmon	0 salmon	0.000 indiv/mt	
Other salmon	0 salmon	0.000 indiv/mt	